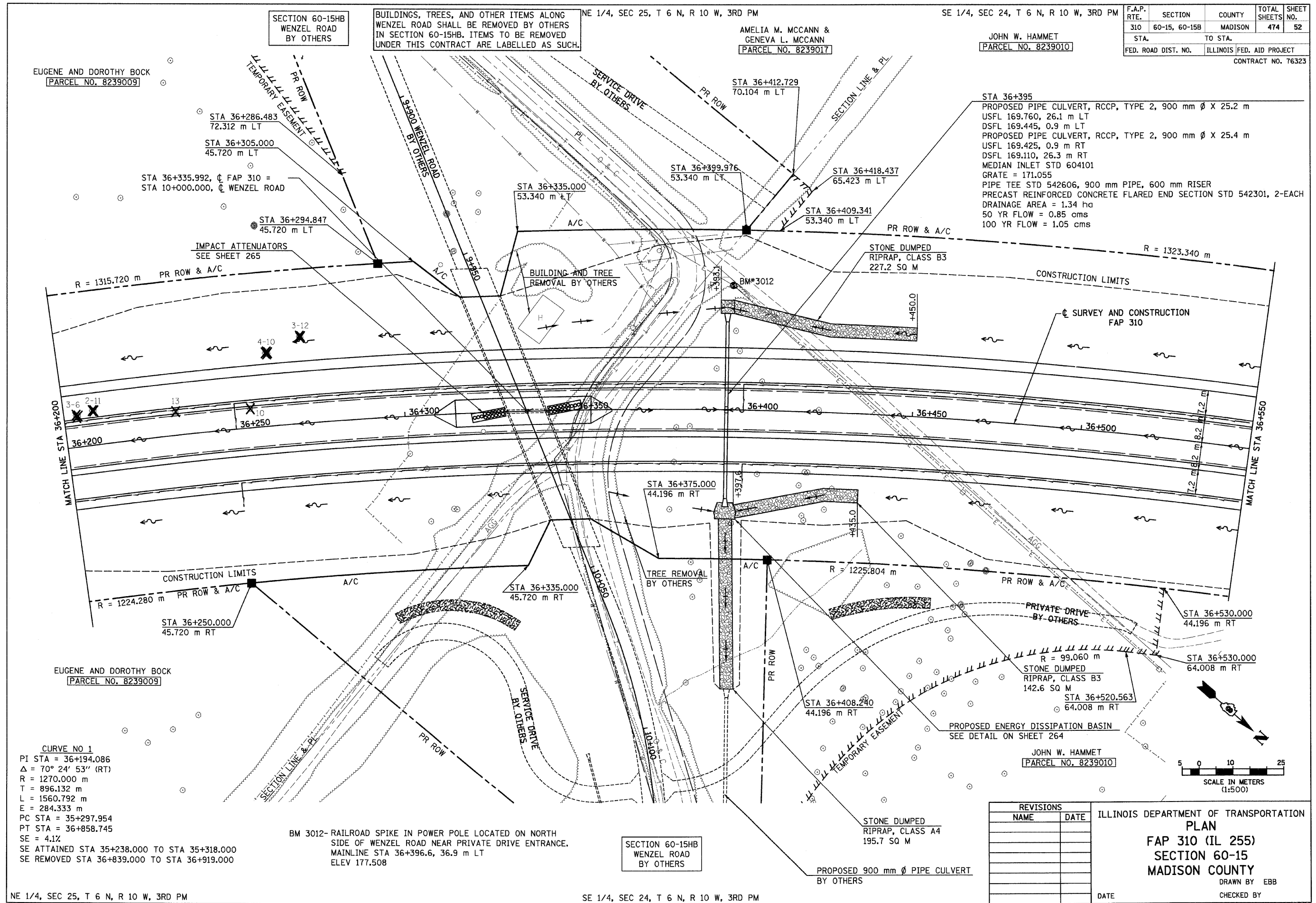


6/28/2007

p:\00files\00024\main\main\plan\prof\files\plan015a04.dgn



SECTION 60-15HB  
WENZEL ROAD  
BY OTHERS

BUILDINGS, TREES, AND OTHER ITEMS ALONG  
WENZEL ROAD SHALL BE REMOVED BY OTHERS  
IN SECTION 60-15HB. ITEMS TO BE REMOVED  
UNDER THIS CONTRACT ARE LABELLED AS SUCH.

NE 1/4, SEC 25, T 6 N, R 10 W, 3RD PM

AMELIA M. MCCANN &  
GENEVA L. MCCANN  
[PARCEL NO. 8239017]

SE 1/4, SEC 24, T 6 N, R 10 W, 3RD PM

JOHN W. HAMMET  
[PARCEL NO. 8239010]

F.A.P. RTE.	SECTION	COUNTY	TOTAL SHEETS	SHEET NO.
310	60-15, 60-15B	MADISON	474	52
STA.		TO STA.		
FED. ROAD DIST. NO.		ILLINOIS FED. AID PROJECT		
CONTRACT NO. 76323				

EUGENE AND DOROTHY BOCK  
[PARCEL NO. 8239009]

STA 36+286.483  
72.312 m LT

STA 36+305.000  
45.720 m LT

STA 36+335.992, C FAP 310 =  
STA 10+000.000, C WENZEL ROAD

STA 36+294.847  
45.720 m LT

IMPACT ATTENUATORS  
SEE SHEET 265

R = 1315.720 m PR ROW & A/C

STA 36+335.000  
53.340 m LT

STA 36+399.976  
53.340 m LT

STA 36+418.437  
65.423 m LT

STA 36+409.341  
53.340 m LT

PR ROW & A/C

STONE DUMPED  
RIPRAP, CLASS B3  
227.2 SQ M

R = 1323.340 m

CONSTRUCTION LIMITS

SURVEY AND CONSTRUCTION  
FAP 310

MATCH LINE STA 36+200

MATCH LINE STA 36+550

CONSTRUCTION LIMITS  
R = 1224.280 m PR ROW & A/C

STA 36+250.000  
45.720 m RT

STA 36+375.000  
44.196 m RT

STA 36+335.000  
45.720 m RT

TREE REMOVAL  
BY OTHERS

R = 1225.804 m

PR ROW & A/C

PRIVATE DRIVE  
BY OTHERS

STA 36+530.000  
44.196 m RT

STA 36+530.000  
64.008 m RT

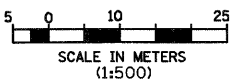
R = 99.060 m

STONE DUMPED  
RIPRAP, CLASS B3  
142.6 SQ M

STA 36+520.563  
64.008 m RT

PROPOSED ENERGY DISSIPATION BASIN  
SEE DETAIL ON SHEET 264

JOHN W. HAMMET  
[PARCEL NO. 8239010]



**CURVE NO 1**  
 PI STA = 36+194.086  
 $\Delta = 70^\circ 24' 53''$  (RT)  
 R = 1270.000 m  
 T = 896.132 m  
 L = 1560.792 m  
 E = 284.333 m  
 PC STA = 35+297.954  
 PT STA = 36+858.745  
 SE = 4.1%  
 SE ATTAINED STA 35+238.000 TO STA 35+318.000  
 SE REMOVED STA 36+839.000 TO STA 36+919.000

BM 3012- RAILROAD SPIKE IN POWER POLE LOCATED ON NORTH  
SIDE OF WENZEL ROAD NEAR PRIVATE DRIVE ENTRANCE.  
MAINLINE STA 36+396.6, 36.9 m LT  
ELEV 177.508

SECTION 60-15HB  
WENZEL ROAD  
BY OTHERS

STONE DUMPED  
RIPRAP, CLASS A4  
195.7 SQ M

PROPOSED 900 mm  $\phi$  PIPE CULVERT  
BY OTHERS

REVISIONS	
NAME	DATE

ILLINOIS DEPARTMENT OF TRANSPORTATION  
**PLAN**  
FAP 310 (IL 255)  
SECTION 60-15  
MADISON COUNTY

DRAWN BY EBB  
CHECKED BY

DATE  
IL 255 (FAP 310), STA 36+200 TO STA 36+550

NE 1/4, SEC 25, T 6 N, R 10 W, 3RD PM

SE 1/4, SEC 24, T 6 N, R 10 W, 3RD PM