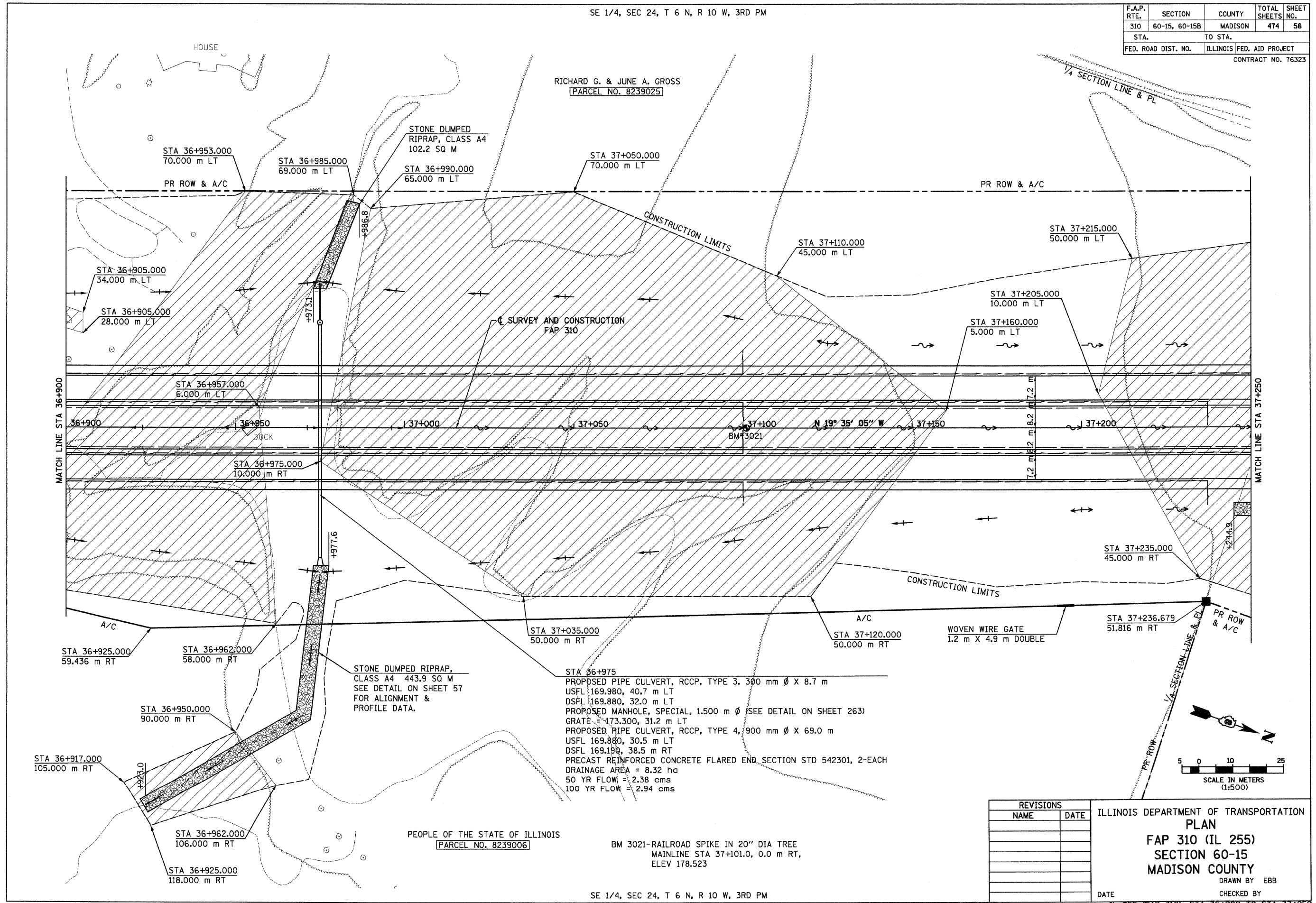


6/28/2007

SE 1/4, SEC 24, T 6 N, R 10 W, 3RD PM

|                     |               |                           |              |           |
|---------------------|---------------|---------------------------|--------------|-----------|
| F.A.P. RTE.         | SECTION       | COUNTY                    | TOTAL SHEETS | SHEET NO. |
| 310                 | 60-15, 60-15B | MADISON                   | 474          | 56        |
| STA.                |               | TO STA.                   |              |           |
| FED. ROAD DIST. NO. |               | ILLINOIS FED. AID PROJECT |              |           |
| CONTRACT NO. 76323  |               |                           |              |           |



MATCH LINE STA 36+900

MATCH LINE STA 37+250

STONE DUMPED RIPRAP,  
CLASS A4 443.9 SQ M  
SEE DETAIL ON SHEET 57  
FOR ALIGNMENT &  
PROFILE DATA.

STA 36+975  
PROPOSED PIPE CULVERT, RCCP, TYPE 3, 300 mm Ø X 8.7 m  
USFL 169.980, 40.7 m LT  
DSFL 169.880, 32.0 m LT  
PROPOSED MANHOLE, SPECIAL, 1.500 m Ø (SEE DETAIL ON SHEET 263)  
GRATE = 173.300, 31.2 m LT  
PROPOSED PIPE CULVERT, RCCP, TYPE 4, 900 mm Ø X 69.0 m  
USFL 169.880, 30.5 m LT  
DSFL 169.190, 38.5 m RT  
PRECAST REINFORCED CONCRETE FLARED END SECTION STD 542301, 2-EACH  
DRAINAGE AREA = 8.32 ha  
50 YR FLOW = 2.38 cms  
100 YR FLOW = 2.94 cms

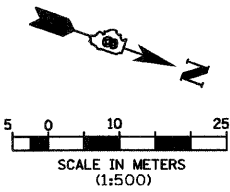
PEOPLE OF THE STATE OF ILLINOIS  
[PARCEL NO. 8239006]

BM 3021-RAILROAD SPIKE IN 20" DIA TREE  
MAINLINE STA 37+101.0, 0.0 m RT,  
ELEV 178.523

SE 1/4, SEC 24, T 6 N, R 10 W, 3RD PM

| REVISIONS |      |
|-----------|------|
| NAME      | DATE |
|           |      |
|           |      |
|           |      |
|           |      |
|           |      |
|           |      |
|           |      |
|           |      |
|           |      |
|           |      |

ILLINOIS DEPARTMENT OF TRANSPORTATION  
PLAN  
FAP 310 (IL 255)  
SECTION 60-15  
MADISON COUNTY  
DRAWN BY EBB  
CHECKED BY  
DATE



IL 255 (FAP 310), STA 36+900 TO STA 37+250

p:\028files\00024\mainline\plan\plan\015a06.dgn