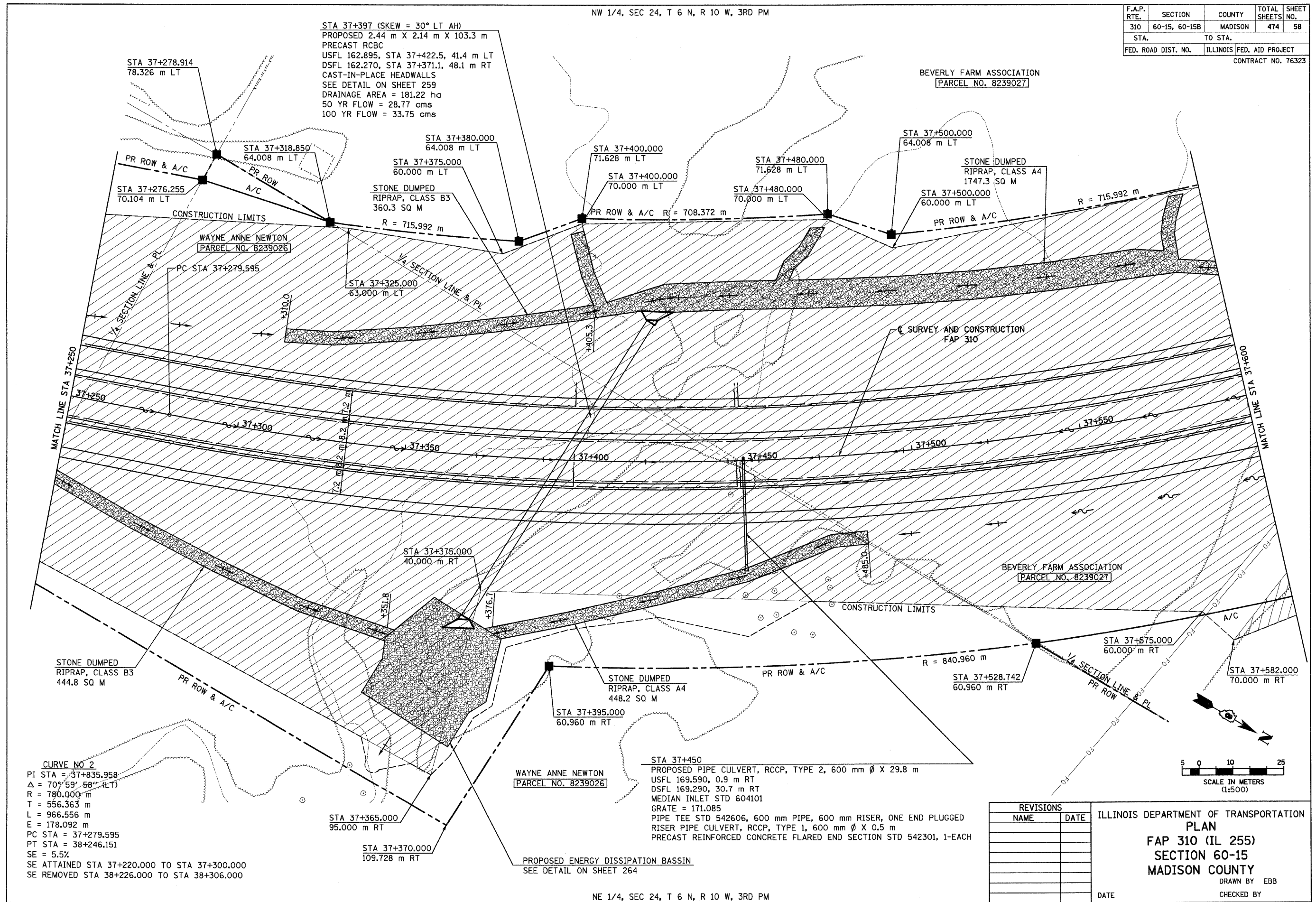


6/28/2007

NW 1/4, SEC 24, T 6 N, R 10 W, 3RD PM

F.A.P. RTE.	SECTION	COUNTY	TOTAL SHEETS	SHEET NO.
310	60-15, 60-15B	MADISON	474	58
STA.	TO STA.			
FED. ROAD DIST. NO.	ILLINOIS FED. AID PROJECT			
CONTRACT NO. 76323				



NE 1/4, SEC 24, T 6 N, R 10 W, 3RD PM

REVISIONS	
NAME	DATE

ILLINOIS DEPARTMENT OF TRANSPORTATION
 PLAN
 FAP 310 (IL 255)
 SECTION 60-15
 MADISON COUNTY

DRAWN BY EBB
 CHECKED BY
 DATE

IL 255 (FAP 310), STA 37+250 TO STA 37+600

p:\0071\ies\00024\mainline\planprofiles\plan215a07.dgn