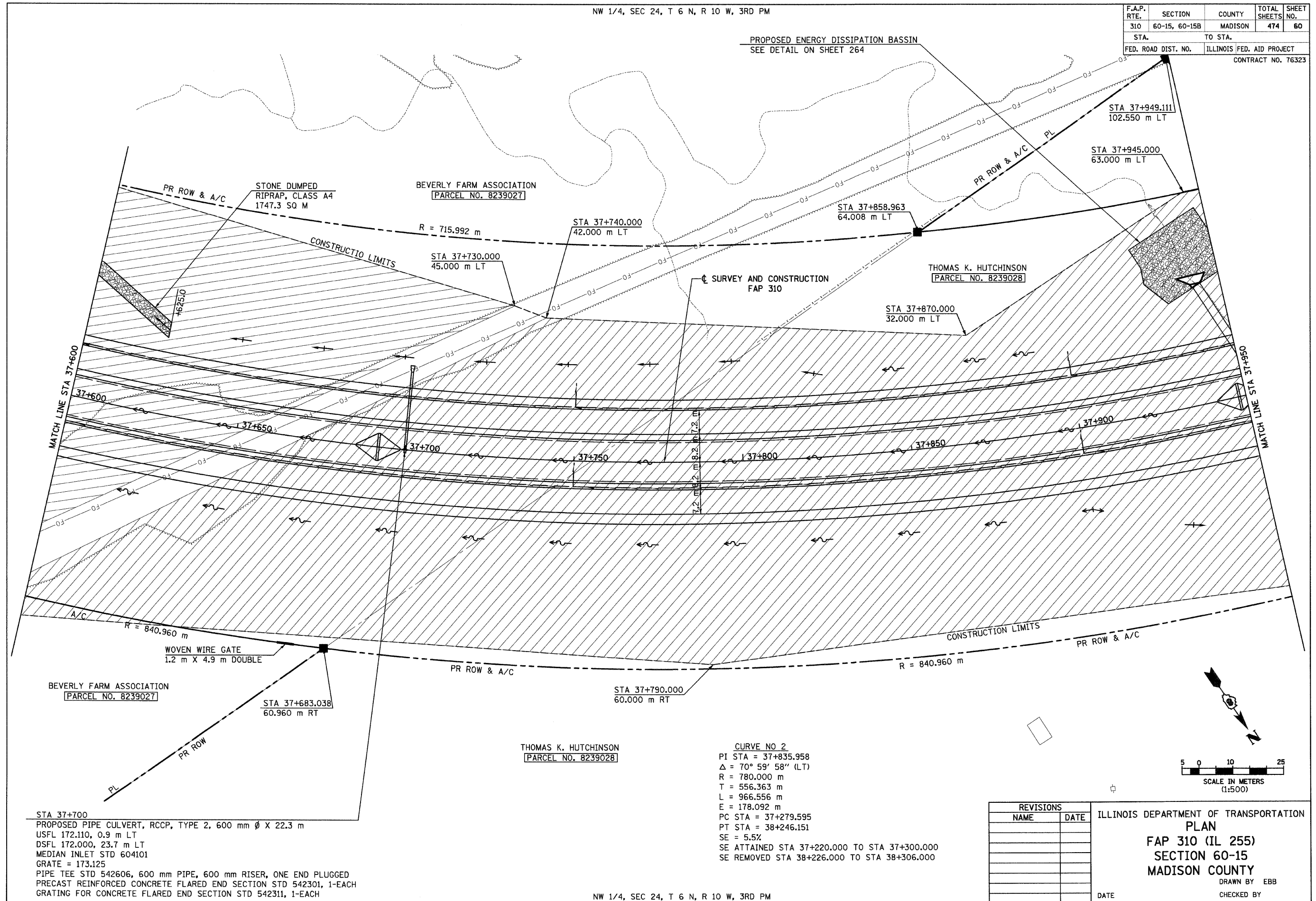


6/28/2007

NW 1/4, SEC 24, T 6 N, R 10 W, 3RD PM

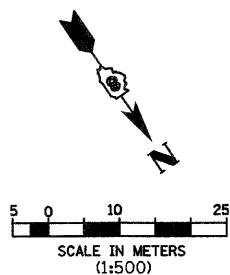
F.A.P. RTE.	SECTION	COUNTY	TOTAL SHEETS	SHEET NO.
310	60-15, 60-15B	MADISON	474	60
STA.	TO STA.			
FED. ROAD DIST. NO.	ILLINOIS FED. AID PROJECT			
CONTRACT NO. 76323				

PROPOSED ENERGY DISSIPATION BASSIN
SEE DETAIL ON SHEET 264



STA 37+700
 PROPOSED PIPE CULVERT, RCCP, TYPE 2, 600 mm Ø X 22.3 m
 USFL 172.110, 0.9 m LT
 DSFL 172.000, 23.7 m LT
 MEDIAN INLET STD 604101
 GRATE = 173.125
 PIPE TEE STD 542606, 600 mm PIPE, 600 mm RISER, ONE END PLUGGED
 PRECAST REINFORCED CONCRETE FLARED END SECTION STD 542301, 1-EACH
 GRATING FOR CONCRETE FLARED END SECTION STD 542311, 1-EACH

CURVE NO 2
 PI STA = 37+835.958
 $\Delta = 70^\circ 59' 58''$ (LT)
 R = 780.000 m
 T = 556.363 m
 L = 966.556 m
 E = 178.092 m
 PC STA = 37+279.595
 PT STA = 38+246.151
 SE = 5.5%
 SE ATTAINED STA 37+220.000 TO STA 37+300.000
 SE REMOVED STA 38+226.000 TO STA 38+306.000



REVISIONS	
NAME	DATE

ILLINOIS DEPARTMENT OF TRANSPORTATION
PLAN
FAP 310 (IL 255)
SECTION 60-15
MADISON COUNTY
 DRAWN BY EBB
 CHECKED BY
 DATE
 IL 255 (FAP 310), STA 37+600 TO STA 37+950

p:\00f\iles\00024\dmainline\planprofile\plan015a08.dgn

NW 1/4, SEC 24, T 6 N, R 10 W, 3RD PM