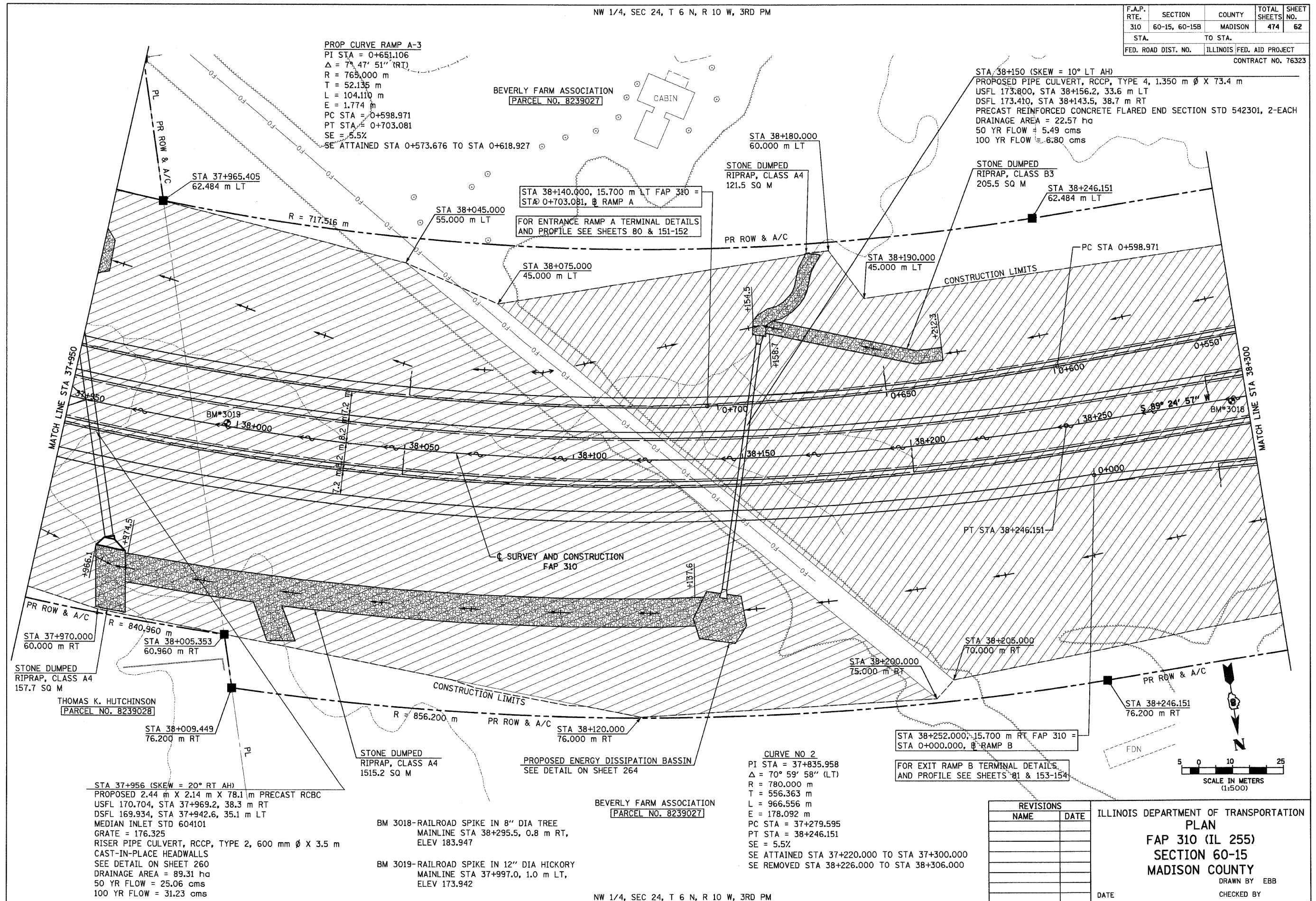


6/28/2007

NW 1/4, SEC 24, T 6 N, R 10 W, 3RD PM

F.A.P. RTE.	SECTION	COUNTY	TOTAL SHEETS	SHEET NO.
310	60-15, 60-15B	MADISON	474	62
STA.		TO STA.		
FED. ROAD DIST. NO.		ILLINOIS FED. AID PROJECT		
CONTRACT NO. 76323				



PROP CURVE RAMP A-3
 PI STA = 0+651.106
 $\Delta = 7^\circ 47' 51''$ (RT)
 R = 765.000 m
 T = 52.135 m
 L = 104.110 m
 E = 1.774 m
 PC STA = 0+598.971
 PT STA = 0+703.081
 SE = 5.5%
 SE ATTAINED STA 0+573.676 TO STA 0+618.927

STA 38+150 (SKEW = 10° LT AH)
 PROPOSED PIPE CULVERT, RCCP, TYPE 4, 1.350 m ϕ X 73.4 m
 USFL 173.800, STA 38+156.2, 33.6 m LT
 DSFL 173.410, STA 38+143.5, 38.7 m RT
 PRECAST REINFORCED CONCRETE FLARED END SECTION STD 542301, 2-EACH
 DRAINAGE AREA = 22.57 ha
 50 YR FLOW = 5.49 cms
 100 YR FLOW = 6.80 cms

STA 38+140.000, 15.700 m LT FAP 310 = STA 0+703.081, B RAMP A
 FOR ENTRANCE RAMP A TERMINAL DETAILS AND PROFILE SEE SHEETS 80 & 151-152

STONE DUMPED RIPRAP, CLASS A4 121.5 SQ M

STONE DUMPED RIPRAP, CLASS B3 205.5 SQ M

STONE DUMPED RIPRAP, CLASS A4 157.7 SQ M

STONE DUMPED RIPRAP, CLASS A4 1515.2 SQ M

PROPOSED ENERGY DISSIPATION BASSIN SEE DETAIL ON SHEET 264

STA 38+252.000, 15.700 m RT FAP 310 = STA 0+000.000, B RAMP B
 FOR EXIT RAMP B TERMINAL DETAILS AND PROFILE SEE SHEETS 81 & 153-154

CURVE NO 2
 PI STA = 37+835.958
 $\Delta = 70^\circ 59' 58''$ (LT)
 R = 780.000 m
 T = 556.363 m
 L = 966.556 m
 E = 178.092 m
 PC STA = 37+279.595
 PT STA = 38+246.151
 SE = 5.5%
 SE ATTAINED STA 37+220.000 TO STA 37+300.000
 SE REMOVED STA 38+226.000 TO STA 38+306.000

STA 37+956 (SKEW = 20° RT AH)
 PROPOSED 2.44 m X 2.14 m X 78.1 m PRECAST RCBC
 USFL 170.704, STA 37+969.2, 38.3 m RT
 DSFL 169.934, STA 37+942.6, 35.1 m LT
 MEDIAN INLET STD 604101
 GRATE = 176.325
 RISER PIPE CULVERT, RCCP, TYPE 2, 600 mm ϕ X 3.5 m
 CAST-IN-PLACE HEADWALLS
 SEE DETAIL ON SHEET 260
 DRAINAGE AREA = 89.31 ha
 50 YR FLOW = 25.06 cms
 100 YR FLOW = 31.23 cms

BM 3018-RAILROAD SPIKE IN 8" DIA TREE
 MAINLINE STA 38+295.5, 0.8 m RT,
 ELEV 183.947

BM 3019-RAILROAD SPIKE IN 12" DIA HICKORY
 MAINLINE STA 37+997.0, 1.0 m LT,
 ELEV 173.942

BEVERLY FARM ASSOCIATION
 [PARCEL NO. 8239027]

NW 1/4, SEC 24, T 6 N, R 10 W, 3RD PM

REVISIONS	
NAME	DATE

ILLINOIS DEPARTMENT OF TRANSPORTATION
PLAN
FAP 310 (IL 255)
SECTION 60-15
MADISON COUNTY
 DRAWN BY EBB
 CHECKED BY
 DATE

IL 255 (FAP 310), STA 37+950 TO STA 38+300

p:\00files\00024\mainline\planprofiles\plan015a09.dgn