

12/10/2007

NW 1/4, SEC 24, R 6 N, R 10 W, 3RD PM

NE 1/4, SEC 23, R 6 N, R 10 W, 3RD PM

F.A.P. RTE.	SECTION	COUNTY	TOTAL SHEETS	SHEET NO.
310	60-15, 60-15B	MADISON	474	64
STA.		TO STA.		
FED. ROAD DIST. NO.		ILLINOIS FED. AID PROJECT		
		CONTRACT NO. 76323		

**CURVE RAMP A-2**  
 PI STA = 0+298.731  
 $\Delta = 24^\circ 03' 05''$  (RT)  
 R = 260.000 m  
 T = 55.387 m  
 L = 109.142 m  
 E = 5.834 m  
 PC STA = 0+243.344  
 PT STA = 0+352.486  
 SE = 6.0%  
 SE ATTAINED STA 0+203.000 TO STA 0+263.000  
 SE REMOVED STA 0+312.486 TO STA 0+464.273

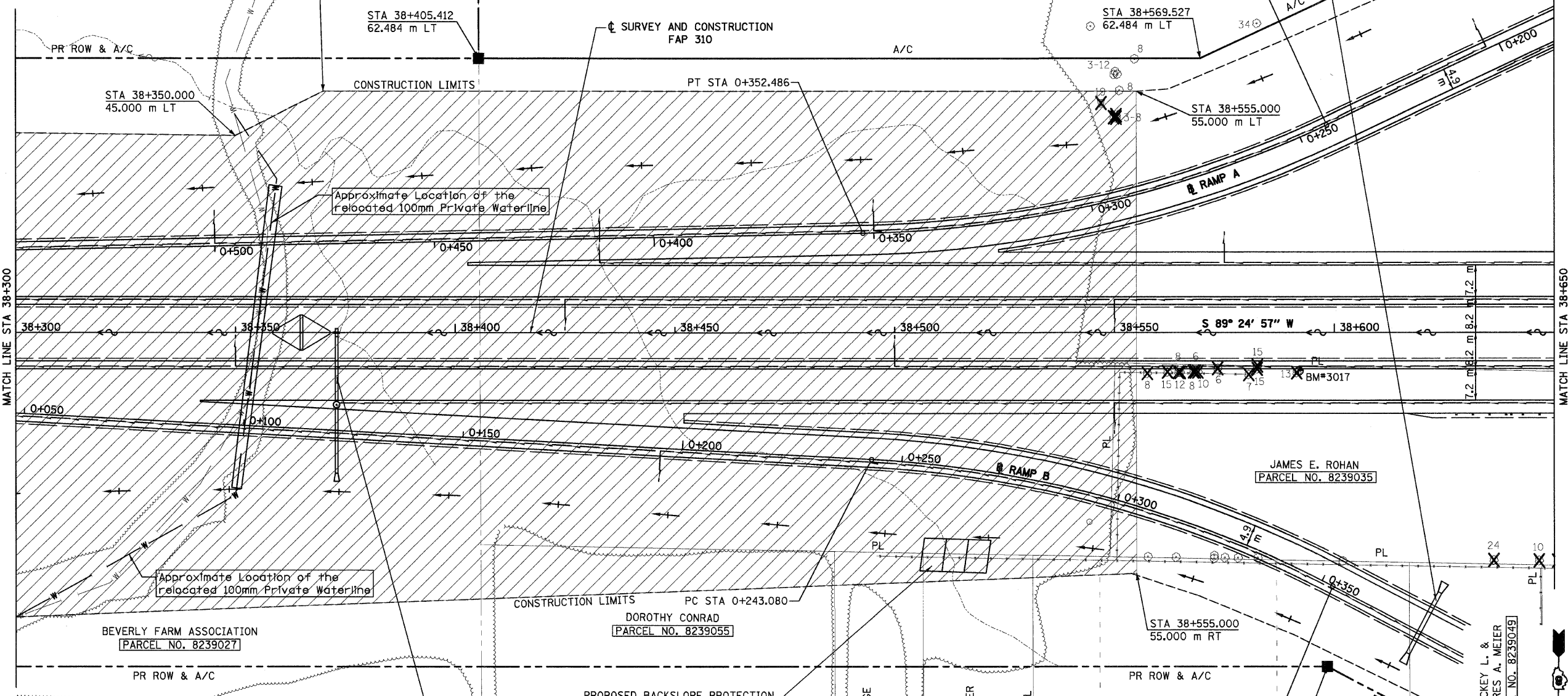
**STA 0+375 (RAMP B)**  
 PROPOSED PIPE CULVERT, RCCP, TYPE 1, 900 mm  $\phi$  X 15.6 m  
 USFL 185.650, 10.0 m LT  
 DSFL 185.570, 5.6 m RT  
 PRECAST REINFORCED CONCRETE FLARED END SECTION STD 542301, 2-EACH  
 GRATING LT FOR CONCRETE FLARED END SECTION STD 542311, 1-EACH  
 DRAINAGE AREA = 2.24 ha  
 50 YR FLOW = 0.82 cms  
 100 YR FLOW = 0.99 cms

STONE DUMPED  
 RIPRAP, CLASS B3  
 103.8 SQ M

Approximate Location of the existing 100mm Private Waterline

BEVERLY FARM ASSOCIATION  
 [PARCEL NO. 8239027]

FOR ENTRANCE RAMP A TERMINAL DETAILS AND PROFILE SEE SHEETS 80 & 151-152



**STA 38+373**  
 PROPOSED PIPE CULVERT, RCCP, TYPE 2, 600 mm  $\phi$  X 14.3 m  
 USFL 180.605, 0.9 m RT  
 DSFL 180.460, 15.2 m RT  
 MEDIAN INLET STD 604101  
 GRATE = 182.270  
 PIPE TEE STD 542606, 600 mm PIPE, 600 mm RISER, ONE END PLUGGED  
 PROPOSED MANHOLE, TYPE A, 1,500 m  $\phi$ , STD 602401  
 TYPE 1 FRAME AND OPEN LID STD 604001  
 TOP LID = 183.270, 16.4 m RT  
 PROPOSED PIPE CULVERT, RCCP, TYPE 2, 600 mm  $\phi$  X 15.4 m  
 USFL 180.445, 16.7 m RT  
 DSFL 180.295, 32.1 m RT  
 PRECAST REINFORCED CONCRETE FLARED END SECTION STD 542301, 1-EACH

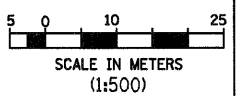
**CURVE RAMP B-1**  
 PI STA = 0+298.776  
 $\Delta = 24^\circ 38' 29''$  (RT)  
 R = 255.000 m  
 T = 55.696 m  
 L = 109.669 m  
 E = 6.012 m  
 PC STA = 0+243.080  
 PT STA = 0+352.749  
 SE = 6.0%  
 SE ATTAINED STA 0+200.080 TO STA 0+264.080  
 SE REMOVED STA 0+333.000 TO STA 0+393.000

BM 3017-RAILROAD SPIKE IN 12" DIA WALNUT  
 MAINLINE STA 38+592.0, 8.7 m RT,  
 ELEV 186.966

FOR EXIT RAMP B TERMINAL DETAILS AND PROFILE SEE SHEETS 81 & 153-154

REVISIONS	
NAME	DATE

ILLINOIS DEPARTMENT OF TRANSPORTATION  
**PLAN**  
**FAP 310 (IL 255)**  
**SECTION 60-15**  
**MADISON COUNTY**  
 DRAWN BY EBB  
 CHECKED BY  
 DATE



p:\00files\000024\MAINLINE\PlanProfiles\plan015a10.dgn

NW 1/4, SEC 24, R 6 N, R 10 W, 3RD PM

NE 1/4, SEC 23, R 6 N, R 10 W, 3RD PM

IL 255 (FAP 310), STA 38+300 TO STA 38+650