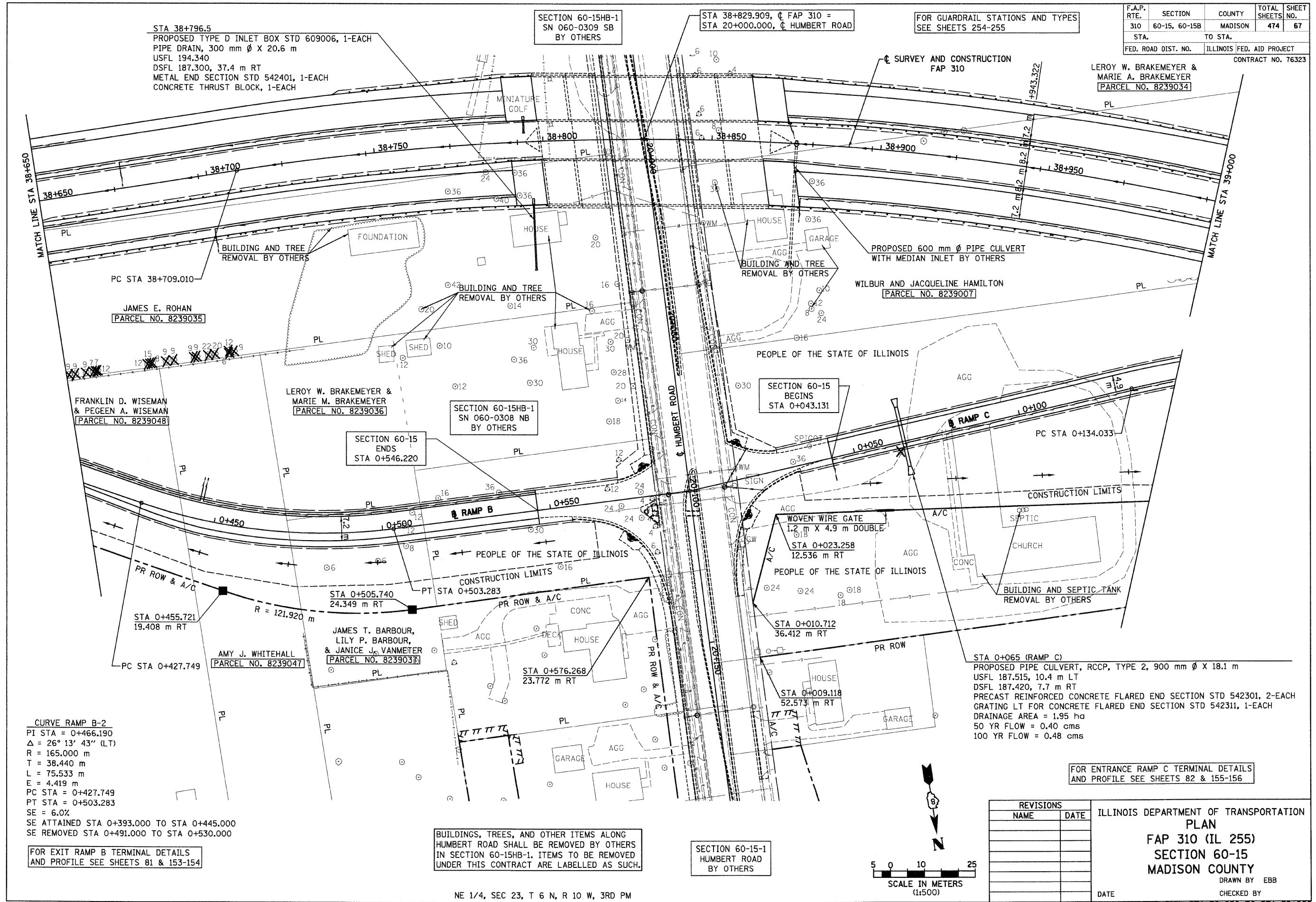


6/28/2007

p:\00files\00024\dmn\line\plan\profiles\plan015all.dgn

F.A.P. RTE.	SECTION	COUNTY	TOTAL SHEETS	SHEET NO.
310	60-15, 60-15B	MADISON	474	67
STA.		TO STA.		
FED. ROAD DIST. NO.		ILLINOIS FED. AID PROJECT		
CONTRACT NO. 76323				

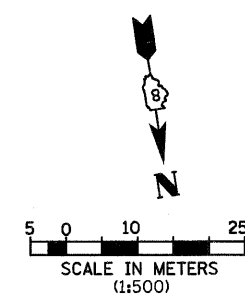


CURVE RAMP B-2
 PI STA = 0+466.190
 Δ = 26° 13' 43" (LT)
 R = 165.000 m
 T = 38.440 m
 L = 75.533 m
 E = 4.419 m
 PC STA = 0+427.749
 PT STA = 0+503.283
 SE = 6.0%
 SE ATTAINED STA 0+393.000 TO STA 0+445.000
 SE REMOVED STA 0+491.000 TO STA 0+530.000

FOR EXIT RAMP B TERMINAL DETAILS AND PROFILE SEE SHEETS 81 & 153-154

BUILDINGS, TREES, AND OTHER ITEMS ALONG HUMBERT ROAD SHALL BE REMOVED BY OTHERS IN SECTION 60-15HB-1. ITEMS TO BE REMOVED UNDER THIS CONTRACT ARE LABELLED AS SUCH.

SECTION 60-15-1 HUMBERT ROAD BY OTHERS



REVISIONS	
NAME	DATE

FOR ENTRANCE RAMP C TERMINAL DETAILS AND PROFILE SEE SHEETS 82 & 155-156

ILLINOIS DEPARTMENT OF TRANSPORTATION
PLAN
FAP 310 (IL 255)
SECTION 60-15
MADISON COUNTY
 DRAWN BY EBB
 CHECKED BY
 DATE

NE 1/4, SEC 23, T 6 N, R 10 W, 3RD PM

IL 255 (FAP 310), STA 38+650 TO STA 39+000