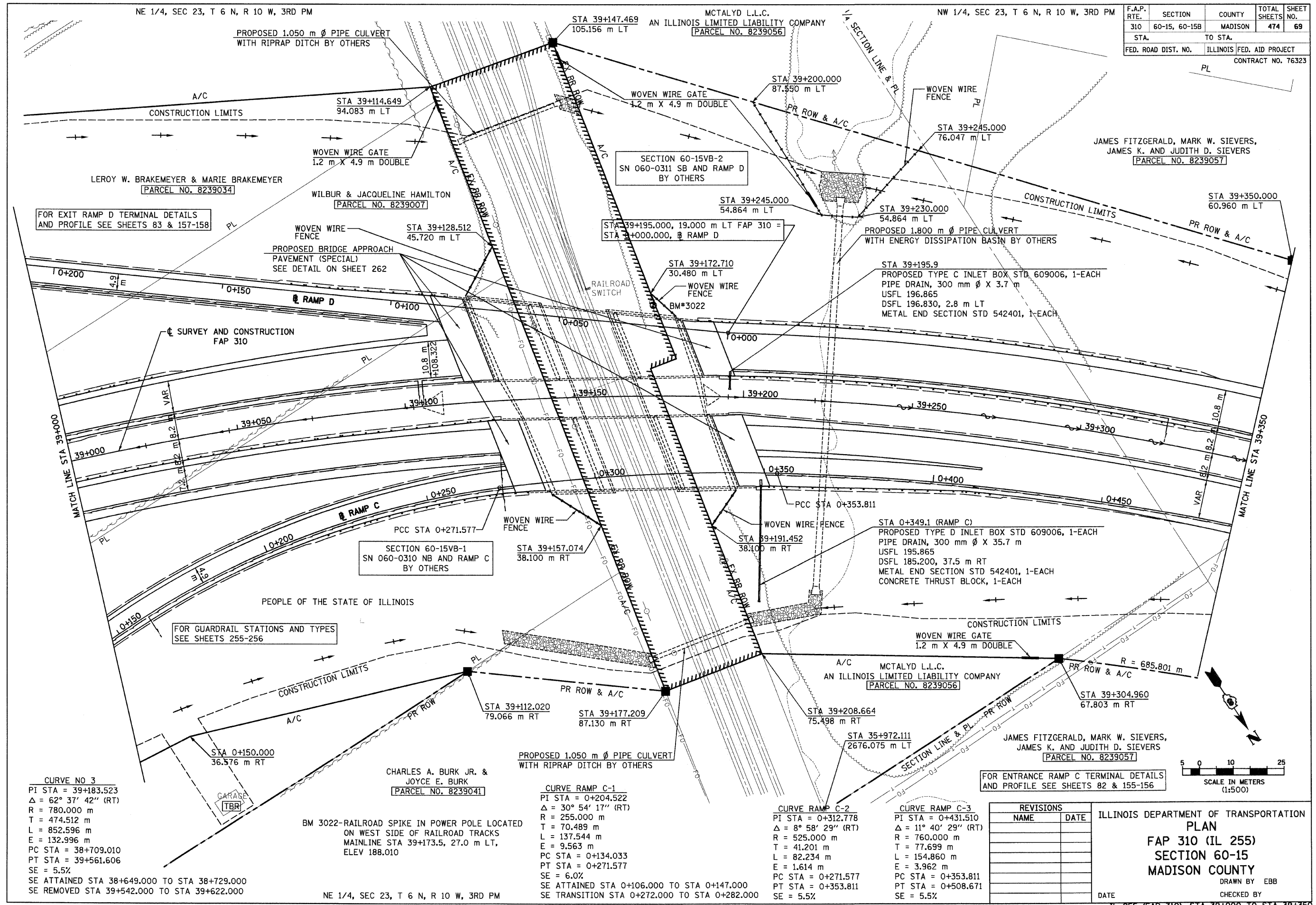


6/28/2007



F.A.P. RTE.	SECTION	COUNTY	TOTAL SHEETS	SHEET NO.
310	60-15, 60-15B	MADISON	474	69
STA.		TO STA.		
FED. ROAD DIST. NO.		ILLINOIS FED. AID PROJECT		
CONTRACT NO. 76323				

**CURVE NO 3**  
 PI STA = 39+183.523  
 $\Delta = 62^\circ 37' 42''$  (RT)  
 R = 780.000 m  
 T = 474.512 m  
 L = 852.596 m  
 E = 132.996 m  
 PC STA = 38+709.010  
 PT STA = 39+561.606  
 SE = 5.5%  
 SE ATTAINED STA 38+649.000 TO STA 38+729.000  
 SE REMOVED STA 39+542.000 TO STA 39+622.000

BM 3022-RAILROAD SPIKE IN POWER POLE LOCATED ON WEST SIDE OF RAILROAD TRACKS MAINLINE STA 39+173.5, 27.0 m LT, ELEV 188.010

**CURVE RAMP C-1**  
 PI STA = 0+204.522  
 $\Delta = 30^\circ 54' 17''$  (RT)  
 R = 255.000 m  
 T = 70.489 m  
 L = 137.544 m  
 E = 9.563 m  
 PC STA = 0+134.033  
 PT STA = 0+271.577  
 SE = 6.0%  
 SE ATTAINED STA 0+106.000 TO STA 0+147.000  
 SE TRANSITION STA 0+272.000 TO STA 0+282.000

**CURVE RAMP C-2**  
 PI STA = 0+312.778  
 $\Delta = 8^\circ 58' 29''$  (RT)  
 R = 525.000 m  
 T = 41.201 m  
 L = 82.234 m  
 E = 1.614 m  
 PC STA = 0+271.577  
 PT STA = 0+353.811  
 SE = 5.5%

**CURVE RAMP C-3**  
 PI STA = 0+431.510  
 $\Delta = 11^\circ 40' 29''$  (RT)  
 R = 760.000 m  
 T = 77.699 m  
 L = 154.860 m  
 E = 3.962 m  
 PC STA = 0+353.811  
 PT STA = 0+508.671  
 SE = 5.5%

FOR ENTRANCE RAMP C TERMINAL DETAILS AND PROFILE SEE SHEETS 82 & 155-156

REVISIONS	
NAME	DATE

ILLINOIS DEPARTMENT OF TRANSPORTATION  
**PLAN**  
**FAP 310 (IL 255)**  
**SECTION 60-15**  
**MADISON COUNTY**  
 DRAWN BY EBB  
 CHECKED BY  
 DATE  
 IL 255 (FAP 310), STA 39+000 TO STA 39+350