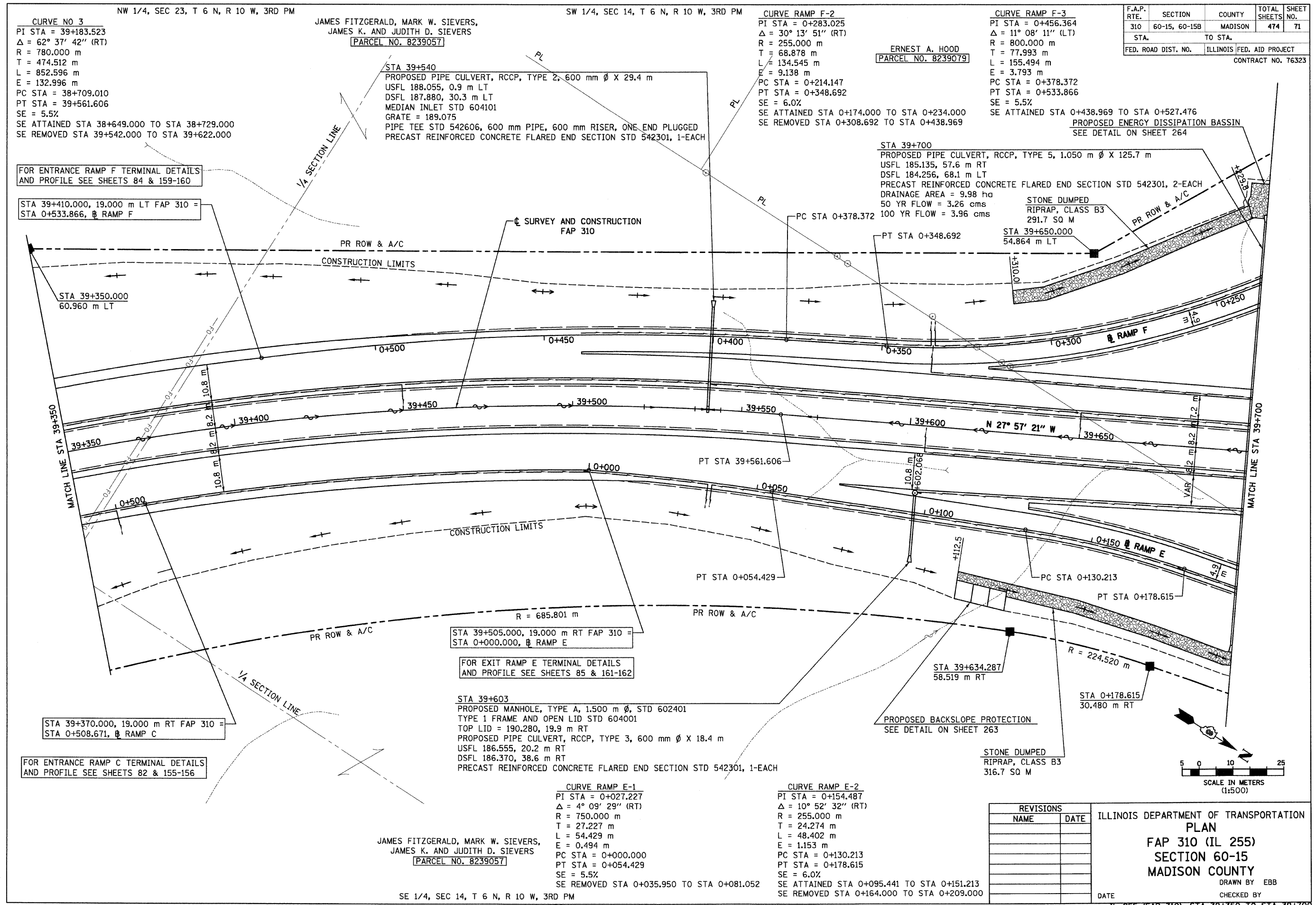


6/28/2007

p:\002files\00024\dmmainline\planprof\files\plan015a13.dgn



CURVE NO 3
 NW 1/4, SEC 23, T 6 N, R 10 W, 3RD PM
 PI STA = 39+183.523
 $\Delta = 62^\circ 37' 42''$ (RT)
 R = 780.000 m
 T = 474.512 m
 L = 852.596 m
 E = 132.996 m
 PC STA = 38+709.010
 PT STA = 39+561.606
 SE = 5.5%
 SE ATTAINED STA 38+649.000 TO STA 38+729.000
 SE REMOVED STA 39+542.000 TO STA 39+622.000

JAMES FITZGERALD, MARK W. SIEVERS,
 JAMES K. AND JUDITH D. SIEVERS
 [PARCEL NO. 8239057]
 STA 39+540
 PROPOSED PIPE CULVERT, RCCP, TYPE 2, 600 mm ϕ X 29.4 m
 USFL 188.055, 0.9 m LT
 DSFL 187.880, 30.3 m LT
 MEDIAN INLET STD 604101
 GRATE = 189.075
 PIPE TEE STD 542606, 600 mm PIPE, 600 mm RISER, ONE END PLUGGED
 PRECAST REINFORCED CONCRETE FLARED END SECTION STD 542301, 1-EACH

CURVE RAMP F-2
 PI STA = 0+283.025
 $\Delta = 30^\circ 13' 51''$ (RT)
 R = 255.000 m
 T = 68.878 m
 L = 134.545 m
 E = 9.138 m
 PC STA = 0+214.147
 PT STA = 0+348.692
 SE = 6.0%
 SE ATTAINED STA 0+174.000 TO STA 0+234.000
 SE REMOVED STA 0+308.692 TO STA 0+438.969

CURVE RAMP F-3
 PI STA = 0+456.364
 $\Delta = 11^\circ 08' 11''$ (LT)
 R = 800.000 m
 T = 77.993 m
 L = 155.494 m
 E = 3.793 m
 PC STA = 0+378.372
 PT STA = 0+533.866
 SE = 5.5%
 SE ATTAINED STA 0+438.969 TO STA 0+527.476
 PROPOSED ENERGY DISSIPATION BASSIN
 SEE DETAIL ON SHEET 264

F.A.P. RTE.	SECTION	COUNTY	TOTAL SHEETS	SHEET NO.
310	60-15, 60-15B	MADISON	474	71
STA.	TO STA.			
FED. ROAD DIST. NO.	ILLINOIS FED. AID PROJECT	CONTRACT NO. 76323		

FOR ENTRANCE RAMP F TERMINAL DETAILS AND PROFILE SEE SHEETS 84 & 159-160

STA 39+410.000, 19.000 m LT FAP 310 = STA 0+533.866, RAMP F

STA 39+350.000, 60.960 m LT

STA 39+370.000, 19.000 m RT FAP 310 = STA 0+508.671, RAMP C

FOR ENTRANCE RAMP C TERMINAL DETAILS AND PROFILE SEE SHEETS 82 & 155-156

STA 39+505.000, 19.000 m RT FAP 310 = STA 0+000.000, RAMP E

FOR EXIT RAMP E TERMINAL DETAILS AND PROFILE SEE SHEETS 85 & 161-162

STA 39+603
 PROPOSED MANHOLE, TYPE A, 1.500 m ϕ , STD 602401
 TYPE 1 FRAME AND OPEN LID STD 604001
 TOP LID = 190.280, 19.9 m RT
 PROPOSED PIPE CULVERT, RCCP, TYPE 3, 600 mm ϕ X 18.4 m
 USFL 186.555, 20.2 m RT
 DSFL 186.370, 38.6 m RT
 PRECAST REINFORCED CONCRETE FLARED END SECTION STD 542301, 1-EACH

CURVE RAMP E-1
 PI STA = 0+027.227
 $\Delta = 4^\circ 09' 29''$ (RT)
 R = 750.000 m
 T = 27.227 m
 L = 54.429 m
 E = 0.494 m
 PC STA = 0+000.000
 PT STA = 0+054.429
 SE = 5.5%
 SE REMOVED STA 0+035.950 TO STA 0+081.052

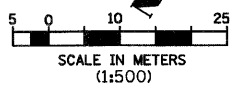
CURVE RAMP E-2
 PI STA = 0+154.487
 $\Delta = 10^\circ 52' 32''$ (RT)
 R = 255.000 m
 T = 24.274 m
 L = 48.402 m
 E = 1.153 m
 PC STA = 0+130.213
 PT STA = 0+178.615
 SE = 6.0%
 SE ATTAINED STA 0+095.441 TO STA 0+151.213
 SE REMOVED STA 0+164.000 TO STA 0+209.000

JAMES FITZGERALD, MARK W. SIEVERS,
 JAMES K. AND JUDITH D. SIEVERS
 [PARCEL NO. 8239057]

SE 1/4, SEC 14, T 6 N, R 10 W, 3RD PM

REVISIONS	
NAME	DATE

ILLINOIS DEPARTMENT OF TRANSPORTATION
FAP 310 (IL 255)
SECTION 60-15
MADISON COUNTY
 DRAWN BY EBB
 CHECKED BY
 DATE



IL 255 (FAP 310), STA 39+350 TO STA 39+700