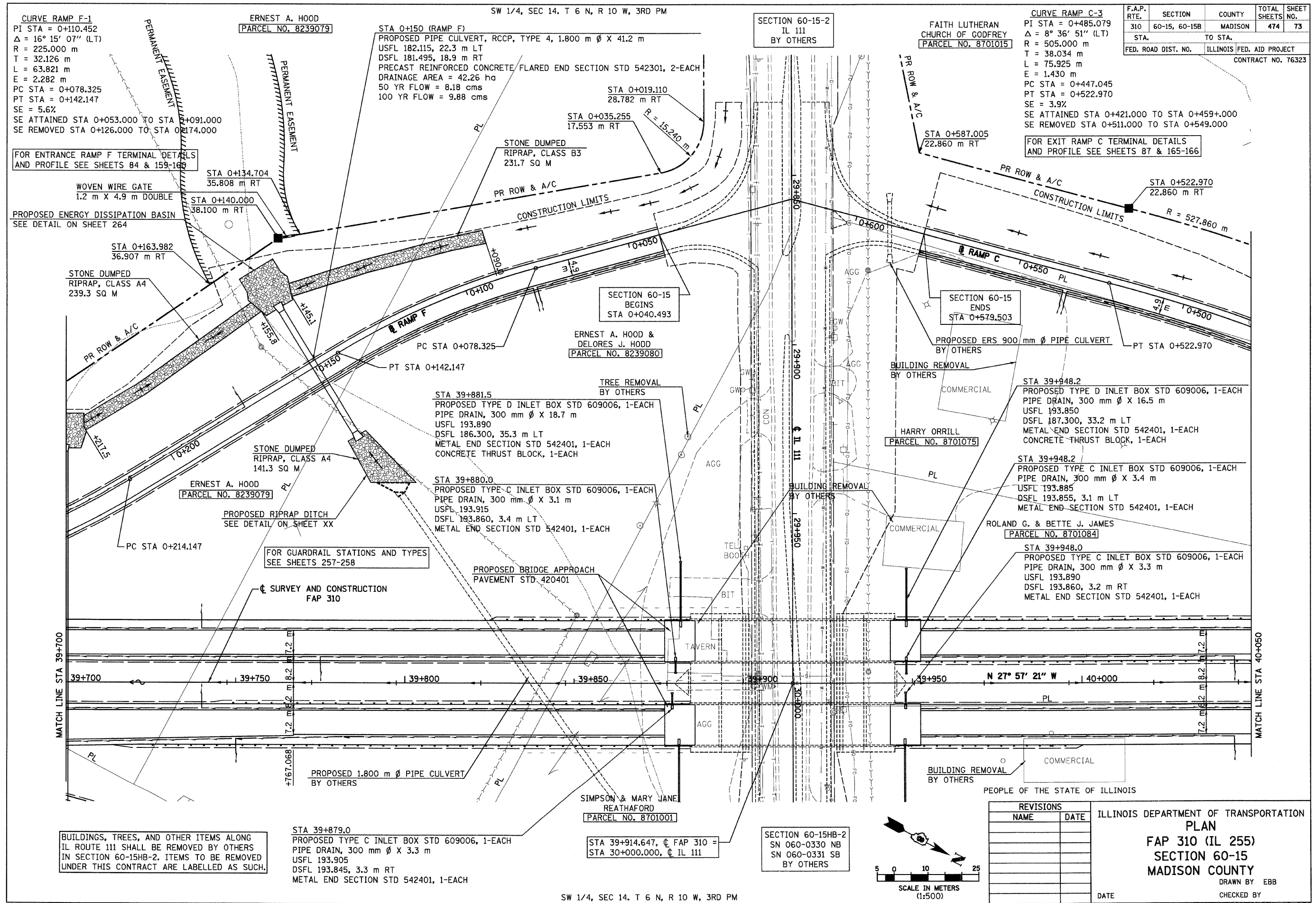


6/28/2007

p:\00files\200224\mainline\planprofile\plan015a14.dgn



CURVE RAMP F-1
 PI STA = 0+110.452
 $\Delta = 16^\circ 15' 07''$ (LT)
 R = 225.000 m
 T = 32.126 m
 L = 63.821 m
 E = 2.282 m
 PC STA = 0+078.325
 PT STA = 0+142.147
 SE = 5.6%
 SE ATTAINED STA 0+053.000 TO STA 0+091.000
 SE REMOVED STA 0+126.000 TO STA 0+174.000

FOR ENTRANCE RAMP F TERMINAL DETAILS AND PROFILE SEE SHEETS 84 & 159-160

WOVEN WIRE GATE
 1.2 m X 4.9 m DOUBLE

PROPOSED ENERGY DISSIPATION BASIN
 SEE DETAIL ON SHEET 264

STONE DUMPED RIPRAP, CLASS A4
 239.3 SQ M

STONE DUMPED RIPRAP, CLASS B3
 231.7 SQ M

STONE DUMPED RIPRAP, CLASS A4
 141.3 SQ M

PROPOSED RIPRAP DITCH
 SEE DETAIL ON SHEET XX

FOR GUARDRAIL STATIONS AND TYPES
 SEE SHEETS 257-258

SURVEY AND CONSTRUCTION
 FAP 310

PROPOSED 1.800 m ϕ PIPE CULVERT
 BY OTHERS

BUILDINGS, TREES, AND OTHER ITEMS ALONG IL ROUTE 111 SHALL BE REMOVED BY OTHERS IN SECTION 60-15HB-2. ITEMS TO BE REMOVED UNDER THIS CONTRACT ARE LABELLED AS SUCH.

STA 39+879.0
 PROPOSED TYPE C INLET BOX STD 609006, 1-EACH
 PIPE DRAIN, 300 mm ϕ X 3.3 m
 USFL 193.905
 DSFL 193.845, 3.3 m RT
 METAL END SECTION STD 542401, 1-EACH

ERNEST A. HOOD
 (PARCEL NO. 8239079)

STA 0+150 (RAMP F)
 PROPOSED PIPE CULVERT, RCCP, TYPE 4, 1.800 m ϕ X 41.2 m
 USFL 182.115, 22.3 m LT
 DSFL 181.495, 18.9 m RT
 PRECAST REINFORCED CONCRETE FLARED END SECTION STD 542301, 2-EACH
 DRAINAGE AREA = 42.26 ha
 50 YR FLOW = 8.18 cms
 100 YR FLOW = 9.88 cms

STONE DUMPED RIPRAP, CLASS B3
 231.7 SQ M

ERNEST A. HOOD & DELORES J. HOOD
 (PARCEL NO. 8239080)

PROPOSED TYPE D INLET BOX STD 609006, 1-EACH
 PIPE DRAIN, 300 mm ϕ X 18.7 m
 USFL 193.890
 DSFL 186.300, 35.3 m LT
 METAL END SECTION STD 542401, 1-EACH
 CONCRETE THRUST BLOCK, 1-EACH

PROPOSED TYPE C INLET BOX STD 609006, 1-EACH
 PIPE DRAIN, 300 mm ϕ X 3.1 m
 USFL 193.915
 DSFL 193.860, 3.4 m LT
 METAL END SECTION STD 542401, 1-EACH

PROPOSED BRIDGE APPROACH
 PAVEMENT STD 420401

SIMPSON & MARY JANE REATHAFORD
 (PARCEL NO. 8701001)

STA 39+914.647, ϕ FAP 310 =
 STA 30+000.000, ϕ IL 111

SECTION 60-15HB-2
 SN 060-0330 NB
 SN 060-0331 SB
 BY OTHERS

SW 1/4, SEC 14. T 6 N, R 10 W, 3RD PM

SECTION 60-15-2
 IL 111
 BY OTHERS

FAITH LUTHERAN CHURCH OF GODFREY
 (PARCEL NO. 8701015)

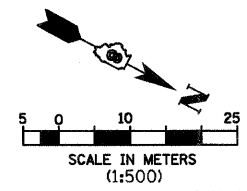
CURVE RAMP C-3
 PI STA = 0+485.079
 $\Delta = 8^\circ 36' 51''$ (LT)
 R = 505.000 m
 T = 38.034 m
 L = 75.925 m
 E = 1.430 m
 PC STA = 0+447.045
 PT STA = 0+522.970
 SE = 3.9%
 SE ATTAINED STA 0+421.000 TO STA 0+459.000
 SE REMOVED STA 0+511.000 TO STA 0+549.000

FOR EXIT RAMP C TERMINAL DETAILS AND PROFILE SEE SHEETS 87 & 165-166

F.A.P. RTE.	SECTION	COUNTY	TOTAL SHEETS	SHEET NO.
310	60-15, 60-15B	MADISON	474	73
STA.		TO STA.		
FED. ROAD DIST. NO.		ILLINOIS FED. AID PROJECT		
CONTRACT NO. 76323				

REVISIONS	
NAME	DATE

ILLINOIS DEPARTMENT OF TRANSPORTATION
 PLAN
 FAP 310 (IL 255)
 SECTION 60-15
 MADISON COUNTY
 DRAWN BY EBB
 CHECKED BY
 DATE



SW 1/4, SEC 14. T 6 N, R 10 W, 3RD PM

IL 255 (FAP 310), STA 39+700 TO STA 40+050