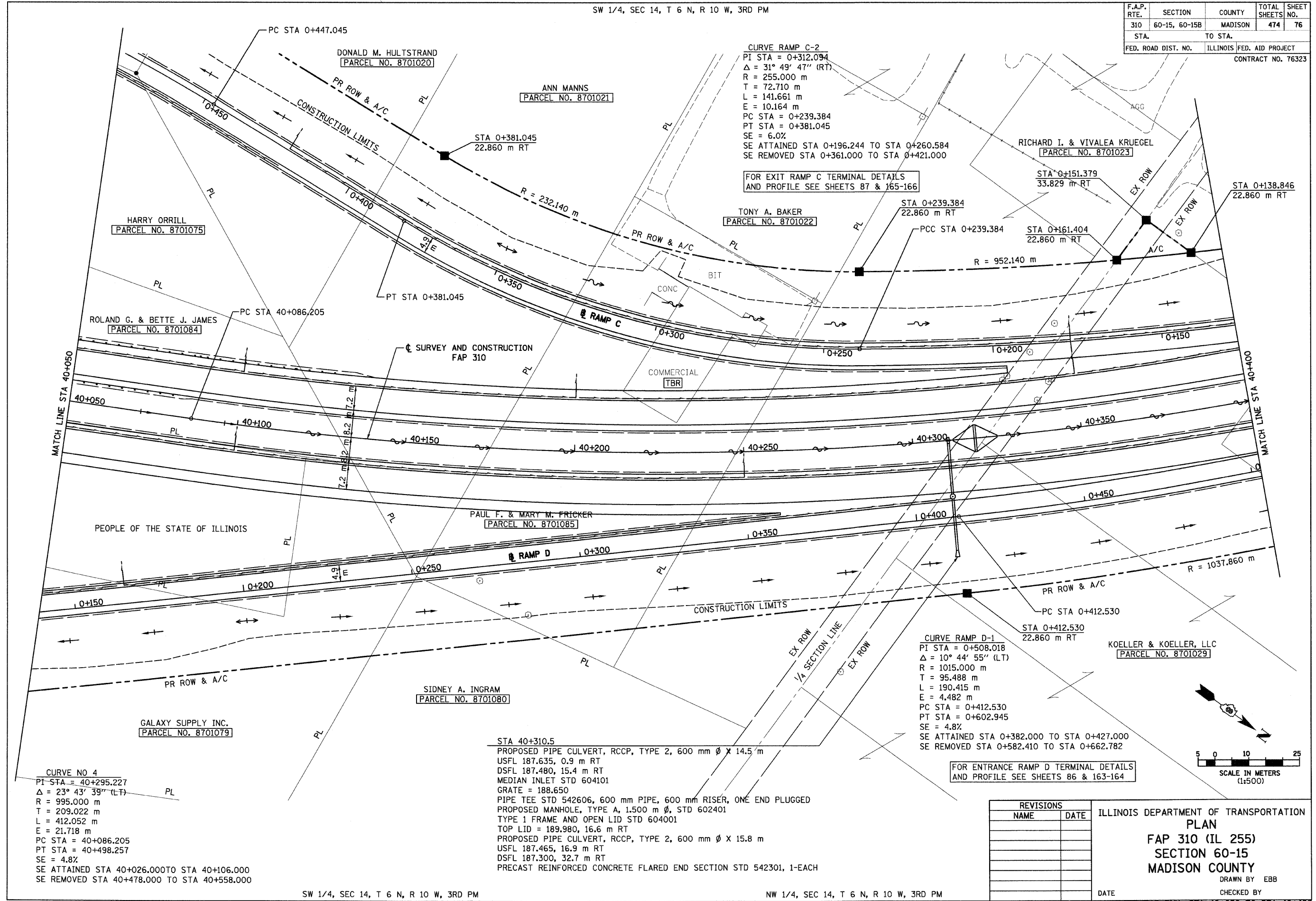


6/28/2007

SW 1/4, SEC 14, T 6 N, R 10 W, 3RD PM

F.A.P. RTE.	SECTION	COUNTY	TOTAL SHEETS	SHEET NO.
310	60-15, 60-15B	MADISON	474	76
STA.		TO STA.		
FED. ROAD DIST. NO.		ILLINOIS FED. AID PROJECT		
CONTRACT NO. 76323				



CURVE RAMP C-2
 PI STA = 0+312.094
 $\Delta = 31^\circ 49' 47''$ (RT)
 R = 255.000 m
 T = 72.710 m
 L = 141.661 m
 E = 10.164 m
 PC STA = 0+239.384
 PT STA = 0+381.045
 SE = 6.0%
 SE ATTAINED STA 0+196.244 TO STA 0+260.584
 SE REMOVED STA 0+361.000 TO STA 0+421.000

FOR EXIT RAMP C TERMINAL DETAILS
 AND PROFILE SEE SHEETS 87 & 165-166

CURVE RAMP D-1
 PI STA = 0+508.018
 $\Delta = 10^\circ 44' 55''$ (LT)
 R = 1015.000 m
 T = 95.488 m
 L = 190.415 m
 E = 4.482 m
 PC STA = 0+412.530
 PT STA = 0+602.945
 SE = 4.8%
 SE ATTAINED STA 0+382.000 TO STA 0+427.000
 SE REMOVED STA 0+582.410 TO STA 0+662.782

FOR ENTRANCE RAMP D TERMINAL DETAILS
 AND PROFILE SEE SHEETS 86 & 163-164

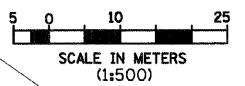
CURVE NO 4
 PI STA = 40+295.227
 $\Delta = 23^\circ 43' 39''$ (LT)
 R = 995.000 m
 T = 209.022 m
 L = 412.052 m
 E = 21.718 m
 PC STA = 40+086.205
 PT STA = 40+498.257
 SE = 4.8%
 SE ATTAINED STA 40+026.000 TO STA 40+106.000
 SE REMOVED STA 40+478.000 TO STA 40+558.000

STA 40+310.5
 PROPOSED PIPE CULVERT, RCCP, TYPE 2, 600 mm ϕ X 14.5 m
 USFL 187.635, 0.9 m RT
 DSFL 187.480, 15.4 m RT
 MEDIAN INLET STD 604101
 GRATE = 188.650
 PIPE TEE STD 542606, 600 mm PIPE, 600 mm RISER, ONE END PLUGGED
 PROPOSED MANHOLE, TYPE A, 1,500 m ϕ , STD 602401
 TYPE 1 FRAME AND OPEN LID STD 604001
 TOP LID = 189.980, 16.6 m RT
 PROPOSED PIPE CULVERT, RCCP, TYPE 2, 600 mm ϕ X 15.8 m
 USFL 187.465, 16.9 m RT
 DSFL 187.300, 32.7 m RT
 PRECAST REINFORCED CONCRETE FLARED END SECTION STD 542301, 1-EACH

REVISIONS	
NAME	DATE

ILLINOIS DEPARTMENT OF TRANSPORTATION
PLAN
FAP 310 (IL 255)
SECTION 60-15
MADISON COUNTY

DRAWN BY EBB
 CHECKED BY
 DATE



SW 1/4, SEC 14, T 6 N, R 10 W, 3RD PM

NW 1/4, SEC 14, T 6 N, R 10 W, 3RD PM

p:\00files\00024\dmainline\plan\prof\ies\plan015a15.dgn