

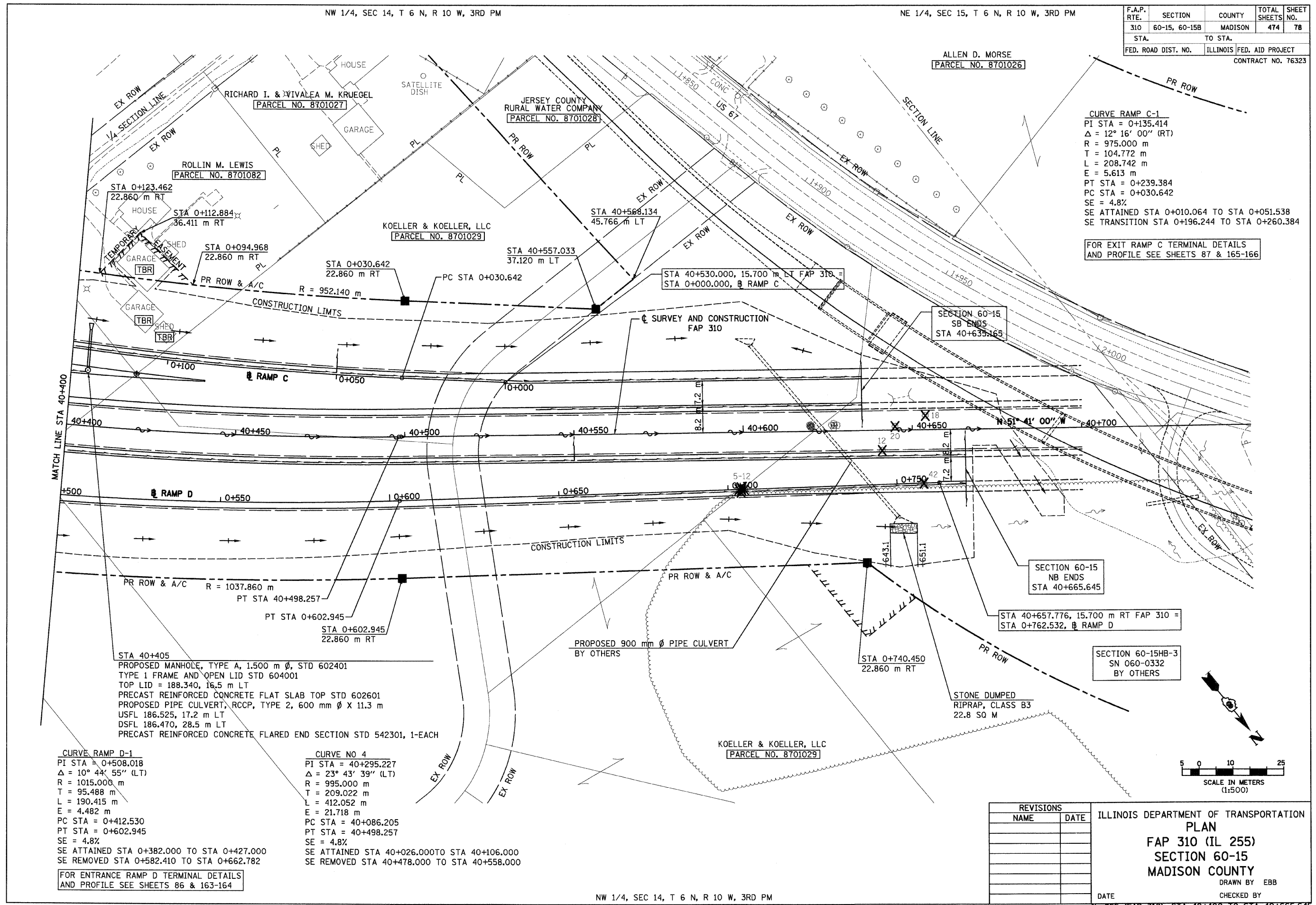
6/28/2007

p:\002files\00024\mainline\planprofiles\plan015a16.dgn

NW 1/4, SEC 14, T 6 N, R 10 W, 3RD PM

NE 1/4, SEC 15, T 6 N, R 10 W, 3RD PM

F.A.P. RTE.	SECTION	COUNTY	TOTAL SHEETS	SHEET NO.
310	60-15, 60-15B	MADISON	474	78
STA.		TO STA.		
FED. ROAD DIST. NO.		ILLINOIS FED. AID PROJECT		
CONTRACT NO. 76323				



**CURVE RAMP C-1**  
 PI STA = 0+135.414  
 $\Delta = 12^\circ 16' 00''$  (RT)  
 R = 975.000 m  
 T = 104.772 m  
 L = 208.742 m  
 E = 5.613 m  
 PT STA = 0+239.384  
 PC STA = 0+030.642  
 SE = 4.8%  
 SE ATTAINED STA 0+010.064 TO STA 0+051.538  
 SE TRANSITION STA 0+196.244 TO STA 0+260.384

FOR EXIT RAMP C TERMINAL DETAILS AND PROFILE SEE SHEETS 87 & 165-166

STA 40+405  
 PROPOSED MANHOLE, TYPE A, 1.500 m  $\phi$ , STD 602401  
 TYPE I FRAME AND OPEN LID STD 604001  
 TOP LID = 188.340, 16.5 m LT  
 PRECAST REINFORCED CONCRETE FLAT SLAB TOP STD 602601  
 PROPOSED PIPE CULVERT, RCCP, TYPE 2, 600 mm  $\phi$  X 11.3 m  
 USFL 186.525, 17.2 m LT  
 DSFL 186.470, 28.5 m LT  
 PRECAST REINFORCED CONCRETE FLARED END SECTION STD 542301, 1-EACH

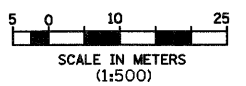
**CURVE RAMP D-1**  
 PI STA = 0+508.018  
 $\Delta = 10^\circ 44' 55''$  (LT)  
 R = 1015.000 m  
 T = 95.488 m  
 L = 190.415 m  
 E = 4.482 m  
 PC STA = 0+412.530  
 PT STA = 0+602.945  
 SE = 4.8%  
 SE ATTAINED STA 0+382.000 TO STA 0+427.000  
 SE REMOVED STA 0+582.410 TO STA 0+662.782

**CURVE NO 4**  
 PI STA = 40+295.227  
 $\Delta = 23^\circ 43' 39''$  (LT)  
 R = 995.000 m  
 T = 209.022 m  
 L = 412.052 m  
 E = 21.718 m  
 PC STA = 40+086.205  
 PT STA = 40+498.257  
 SE = 4.8%  
 SE ATTAINED STA 40+026.000 TO STA 40+106.000  
 SE REMOVED STA 40+478.000 TO STA 40+558.000

FOR ENTRANCE RAMP D TERMINAL DETAILS AND PROFILE SEE SHEETS 86 & 163-164

REVISIONS	
NAME	DATE

ILLINOIS DEPARTMENT OF TRANSPORTATION  
**PLAN**  
**FAP 310 (IL 255)**  
**SECTION 60-15**  
**MADISON COUNTY**  
 DRAWN BY EBB  
 CHECKED BY  
 DATE



NW 1/4, SEC 14, T 6 N, R 10 W, 3RD PM

IL 255 (FAP 310), STA 40+400 TO STA 40+665.645