

COORDINATES SHOWN HEREON ARE BASED ON SURVEY CONTROL DATA AS PROVIDED BY THE ILLINOIS DEPARTMENT OF TRANSPORTATION.

PART OF THE N 1/2 OF SECTION 23, T6N, R10W, OF THE 3RD PM, MADISON COUNTY, ILLINOIS & PART OF S 1/2 OF SECTION 14, T6N, R10W OF THE 3RD PM

BEARINGS SHOWN HEREON ARE BASED ON SURVEY CONTROL DATA AS PROVIDED BY THE ILLINOIS DEPARTMENT OF TRANSPORTATION.

COORDINATE TABLE (FAP310) with columns for STATION, OFFSET, NORTH, and EAST. Includes data for stations 39+147.469 through 39+805.316.

COORDINATE TABLE (RAMP F) with columns for STATION, OFFSET, NORTH, and EAST. Includes data for stations 0+348.692 and 0+378.372.

COORDINATE TABLE (RAMP C) with columns for STATION, OFFSET, NORTH, and EAST. Includes data for stations 0+495.814 and 0+130.213.

COORDINATE TABLE (RAMP E) with columns for STATION, OFFSET, NORTH, and EAST. Includes data for stations 0+054.429 and 0+178.615.

FOR TOTAL HOLDINGS & ADDITIONAL TIES SEE SHEET 40

FOR TOTAL HOLDINGS & ADDITIONAL TIES SEE SHEET 40

FOR TOTAL HOLDINGS & ADDITIONAL TIES SEE SHEET 40

FOR TOTAL HOLDINGS & ADDITIONAL TIES SEE SHEET 40

FOR TOTAL HOLDINGS & ADDITIONAL TIES SEE SHEET 40

FOR TOTAL HOLDINGS & ADDITIONAL TIES SEE SHEET 40

FOR TOTAL HOLDINGS & ADDITIONAL TIES SEE SHEET 40

FOR TOTAL HOLDINGS & ADDITIONAL TIES SEE SHEET 40

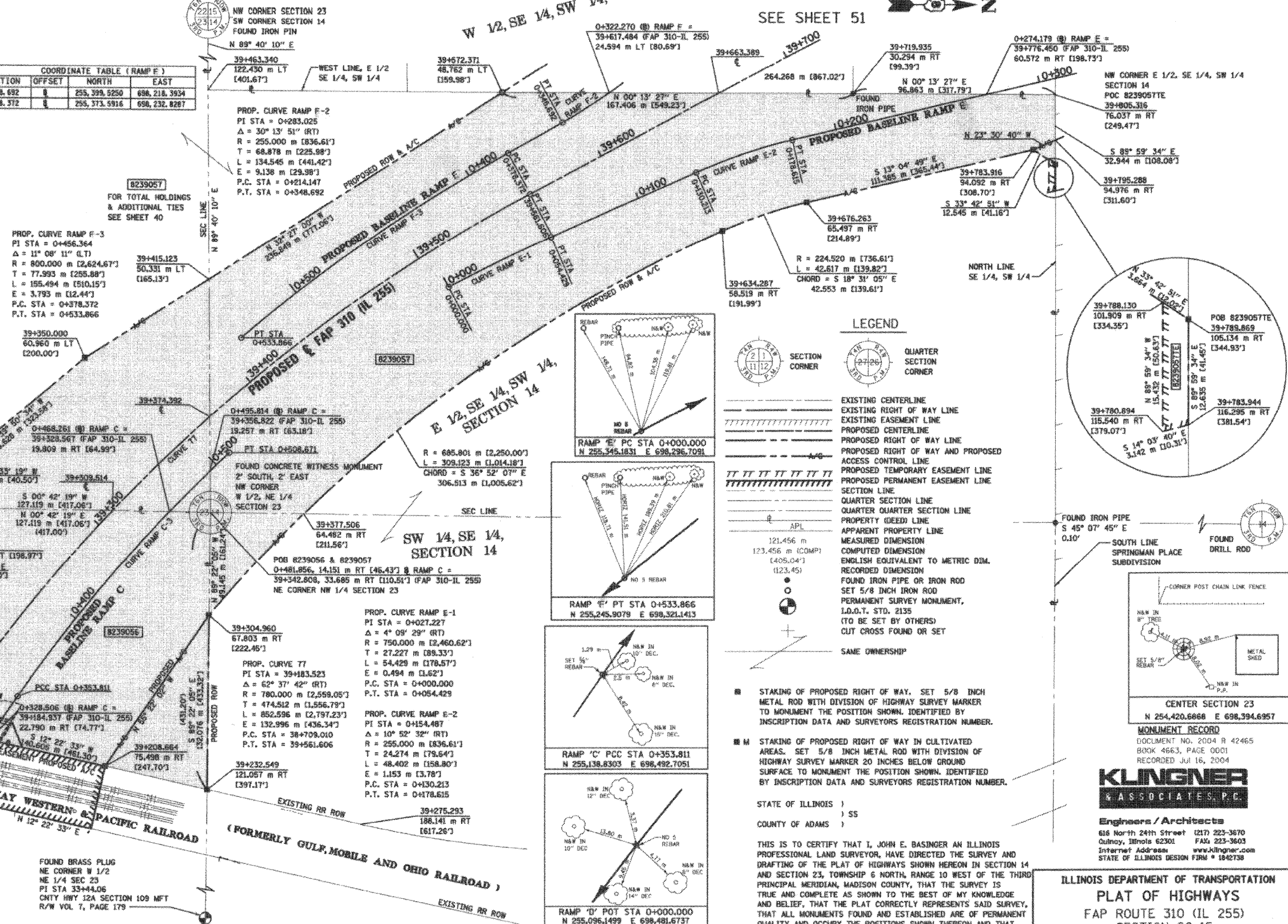
FOR TOTAL HOLDINGS & ADDITIONAL TIES SEE SHEET 40

FOR TOTAL HOLDINGS & ADDITIONAL TIES SEE SHEET 40

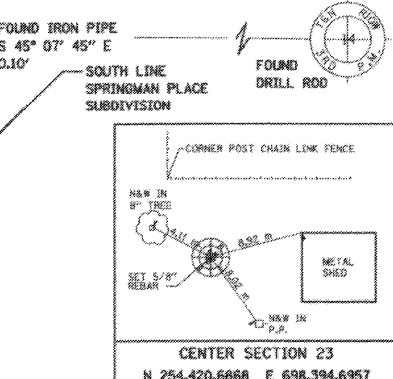
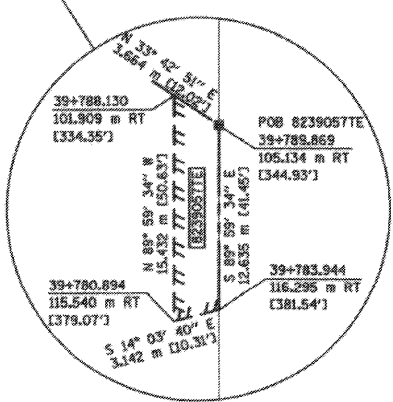
FOR TOTAL HOLDINGS & ADDITIONAL TIES SEE SHEET 40

FOR TOTAL HOLDINGS & ADDITIONAL TIES SEE SHEET 40

FOR TOTAL HOLDINGS & ADDITIONAL TIES SEE SHEET 40



LEGEND section defining symbols for EXISTING CENTERLINE, EXISTING RIGHT OF WAY LINE, EXISTING EASEMENT LINE, PROPOSED CENTERLINE, PROPOSED RIGHT OF WAY LINE, PROPOSED RIGHT OF WAY AND PROPOSED ACCESS CONTROL LINE, PROPOSED TEMPORARY EASEMENT LINE, PROPOSED PERMANENT EASEMENT LINE, SECTION LINE, QUARTER SECTION LINE, QUARTER SECTION CORNER, PROPERTY (DEED) LINE, APPARENT PROPERTY LINE, MEASURED DIMENSION, COMPUTED DIMENSION, ENGLISH EQUIVALENT TO METRIC DIM., RECORDED DIMENSION, FOUND IRON PIPE OR IRON ROD, SET 5/8 INCH IRON ROD, PERMANENT SURVEY MONUMENT, I.D.O.T. STD. 2135, (TO BE SET BY OTHERS), CUT CROSS FOUND OR SET, SAME OWNERSHIP.



MONUMENT RECORD DOCUMENT NO. 2004 R 42465 BROK 4663, PAGE 0001 RECORDED JUL 16, 2004

KLINGNER & ASSOCIATES, P.C. Engineers / Architects. 616 North 24th Street (217) 223-3670, Galtney, Illinois 62301 FAX 223-3603, Internet Address: www.klingner.com, STATE OF ILLINOIS DESIGN FIRM # 1842738

- STAKING OF PROPOSED RIGHT OF WAY. SET 5/8 INCH METAL ROD WITH DIVISION OF HIGHWAY SURVEY MARKER TO MONUMENT THE POSITION SHOWN, IDENTIFIED BY INSCRIPTION DATA AND SURVEYORS REGISTRATION NUMBER.
STAKING OF PROPOSED RIGHT OF WAY IN CULTIVATED AREAS. SET 5/8 INCH METAL ROD WITH DIVISION OF HIGHWAY SURVEY MARKER 20 INCHES BELOW GROUND SURFACE TO MONUMENT THE POSITION SHOWN, IDENTIFIED BY INSCRIPTION DATA AND SURVEYORS REGISTRATION NUMBER.

STATE OF ILLINOIS )
COUNTY OF ADAMS )

THIS IS TO CERTIFY THAT I, JOHN E. BASINGER AN ILLINOIS PROFESSIONAL LAND SURVEYOR, HAVE DIRECTED THE SURVEY AND DRAFTING OF THE PLAT OF HIGHWAYS SHOWN HEREON IN SECTION 14 AND SECTION 23, TOWNSHIP 6 NORTH, RANGE 10 WEST OF THE THIRD PRINCIPAL MERIDIAN, MADISON COUNTY, THAT THE SURVEY IS TRUE AND COMPLETE AS SHOWN TO THE BEST OF MY KNOWLEDGE AND BELIEF, THAT THE PLAT CORRECTLY REPRESENTS SAID SURVEY, THAT ALL MONUMENTS FOUND AND ESTABLISHED ARE OF PERMANENT QUALITY AND OCCUPY THE POSITIONS SHOWN THEREON AND THAT THE MONUMENTS ARE SUFFICIENT TO ENABLE THE SURVEY TO BE RETRACED, MADE FOR THE DEPARTMENT OF TRANSPORTATION, STATE OF ILLINOIS.

DATED 11-30-2005
JOHN E. BASINGER, PLS #2766
LICENSE EXPIRATION DATE: 11-30-2006
"THIS PROFESSIONAL SERVICE CONFORMS TO THE CURRENT ILLINOIS MINIMUM STANDARDS FOR A BOUNDARY SURVEY."
FIELD WORK COMPLETED: APRIL 2004

Table with columns: PARCEL NO., OWNER, TOTAL HOLDING, FEE SIMPLE ACQUISITION (GROSS, NET, REMAINDER), EASEMENTS (PE, TE, EASEMENT PURPOSE), PERMANENT TAX NUMBER, PROPERTY ACQUIRED BY.

ILLINOIS DEPARTMENT OF TRANSPORTATION PLAT OF HIGHWAYS FAP ROUTE 310 (IL 255) SECTION 60-15 MADISON COUNTY JOB NO. R-98-039-92. Includes scale bar (0m to 60m) and SHEET 41 OF 55.

11/30/2005 11:30:53 AM 3066311 P.M. 01/20/2007 10:00:24 AM 3233905657.dgn 48EFT- 48EFT- 48EFT-

PLOT DATE: 11/30/2005 3:05:31 PM