

PART OF THE SW 1/4 OF SECTION 14, T6N, R10W, OF THE 3RD PM, MADISON COUNTY, ILLINOIS

BEARINGS SHOWN HEREON ARE BASED ON SURVEY CONTROL DATA AS PROVIDED BY THE ILLINOIS DEPARTMENT OF TRANSPORTATION.

LEGEND

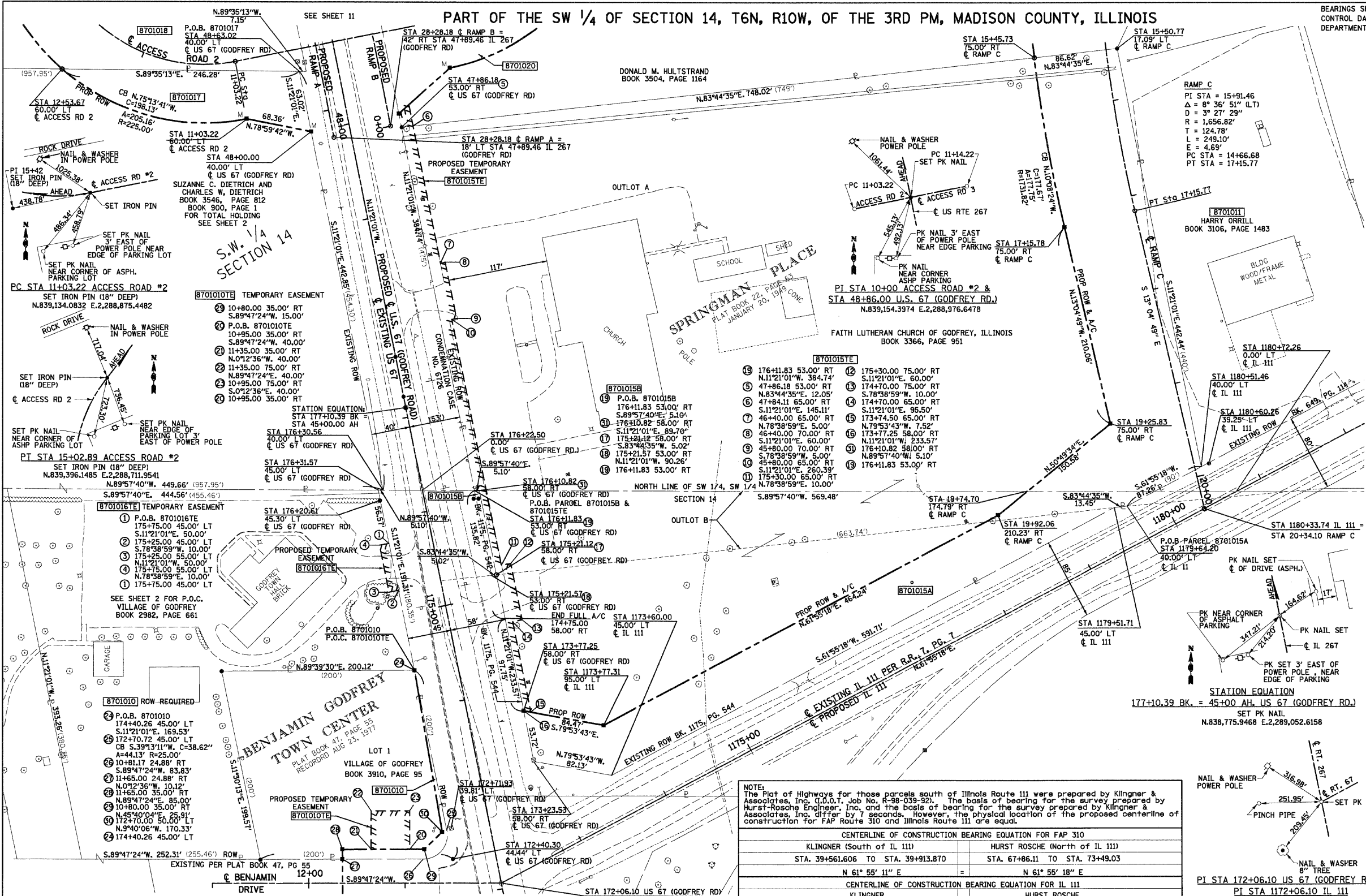
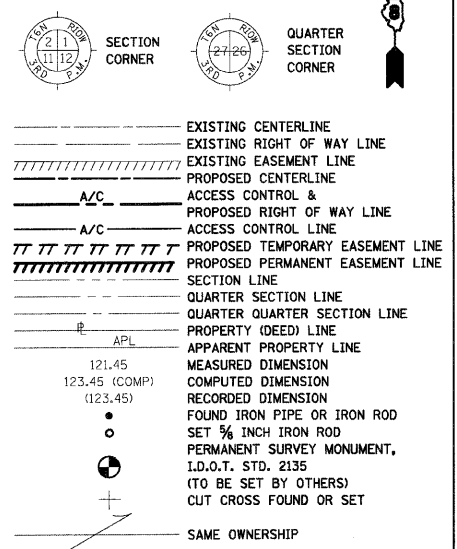


Table with columns: PARCEL NO., OWNER/TITLE REPORT NO., TOTAL HOLDING, R.O.W. REQUIRED, PREVIOUSLY DEDICATED, REMAINDER, EASEMENTS TEMP PERM, EASEMENT PURPOSE, PERMANENT TAX NUMBER, PROPERTY ACQUIRED BY.

Table with columns: STATION, OFFSET, NORTH, EAST, STATION, OFFSET, NORTH, EAST, STATION, OFFSET, NORTH, EAST. Includes coordinate data for various points.

STAKING OF PROPOSED RIGHT OF WAY. SET 3/8 INCH METAL ROD WITH DIVISION OF HIGHWAY SURVEY MARKER TO MONUMENT THE POSITION SHOWN, IDENTIFIED BY INSCRIPTION DATA AND SURVEYORS REGISTRATION NUMBER.

STATE OF ILLINOIS ) COUNTY OF ) THIS IS TO CERTIFY THAT I, JEFFREY B. MEYER AN ILLINOIS PROFESSIONAL LAND SURVEYOR, HAS SURVEYED THE PLAT OF HIGHWAYS SHOWN HEREON IN SECTION 14, TOWNSHIP 6 NORTH, RANGE 10 WEST, OF THE THIRD PRINCIPAL MERIDIAN, MADISON COUNTY, THAT THE SURVEY IS TRUE AND COMPLETE AS SHOWN TO THE BEST OF MY KNOWLEDGE AND BELIEF, THAT THE PLAT CORRECTLY REPRESENTS SAID SURVEY, THAT ALL MONUMENTS FOUND AND ESTABLISHED ARE OF PERMANENT QUALITY AND OCCUPY THE POSITIONS SHOWN THEREON AND THAT THE MONUMENTS ARE SUFFICIENT TO ENABLE THE SURVEY TO BE RETRACED. MADE FOR THE DEPARTMENT OF TRANSPORTATION, STATE OF ILLINOIS.

DATED JEFFREY B. MEYER, PLS No. 035-002977

HR HURST-ROSCHKE ENGINEERS INC. 1400 E. TREMONT STREET P.O. BOX 130 HILLSBORO, ILLINOIS 62409 PH. 217 582-3959 FAX 217 582-9212

ILLINOIS DEPARTMENT OF TRANSPORTATION PLAT OF HIGHWAYS FAP ROUTE 310 (US 67) SECTION 60-16, 60-15 MADISON COUNTY JOB NO. R-98-001-97/R-98-039-92 STATION 172+00 TO STATION 48+86 SCALE: 1" = 50' SHEET 8 OF 29

NOTE: The Plat of Highways for those parcels south of Illinois Route 111 were prepared by Klingner & Associates, Inc. (I.D.O.T. Job No. R-98-039-92). The basis of bearing for the survey prepared by Hurst-Roschke Engineer, Inc. and the basis of bearing for the survey prepared by Klingner & Associates, Inc. differ by 7 seconds. However, the physical location of the proposed centerline of construction for FAP Route 310 and Illinois Route 111 are equal.

CENTERLINE OF CONSTRUCTION BEARING EQUATION FOR FAP 310 KLINGNER (South of IL 111) HURST ROSCHKE (North of IL 111) STA. 39+561.606 TO STA. 39+913.870 STA. 67+86.11 TO STA. 73+49.03

CENTERLINE OF CONSTRUCTION BEARING EQUATION FOR IL 111 KLINGNER HURST ROSCHKE N 27° 57' 21" W N 27° 57' 14" W

COORDINATES SHOWN HEREON ARE BASED ON SURVEY CONTROL DATA AS PROVIDED BY THE ILLINOIS DEPARTMENT OF TRANSPORTATION.

Table with columns: STATION, OFFSET, NORTH, EAST, STATION, OFFSET, NORTH, EAST, STATION, OFFSET, NORTH, EAST. Includes coordinate data for various points.