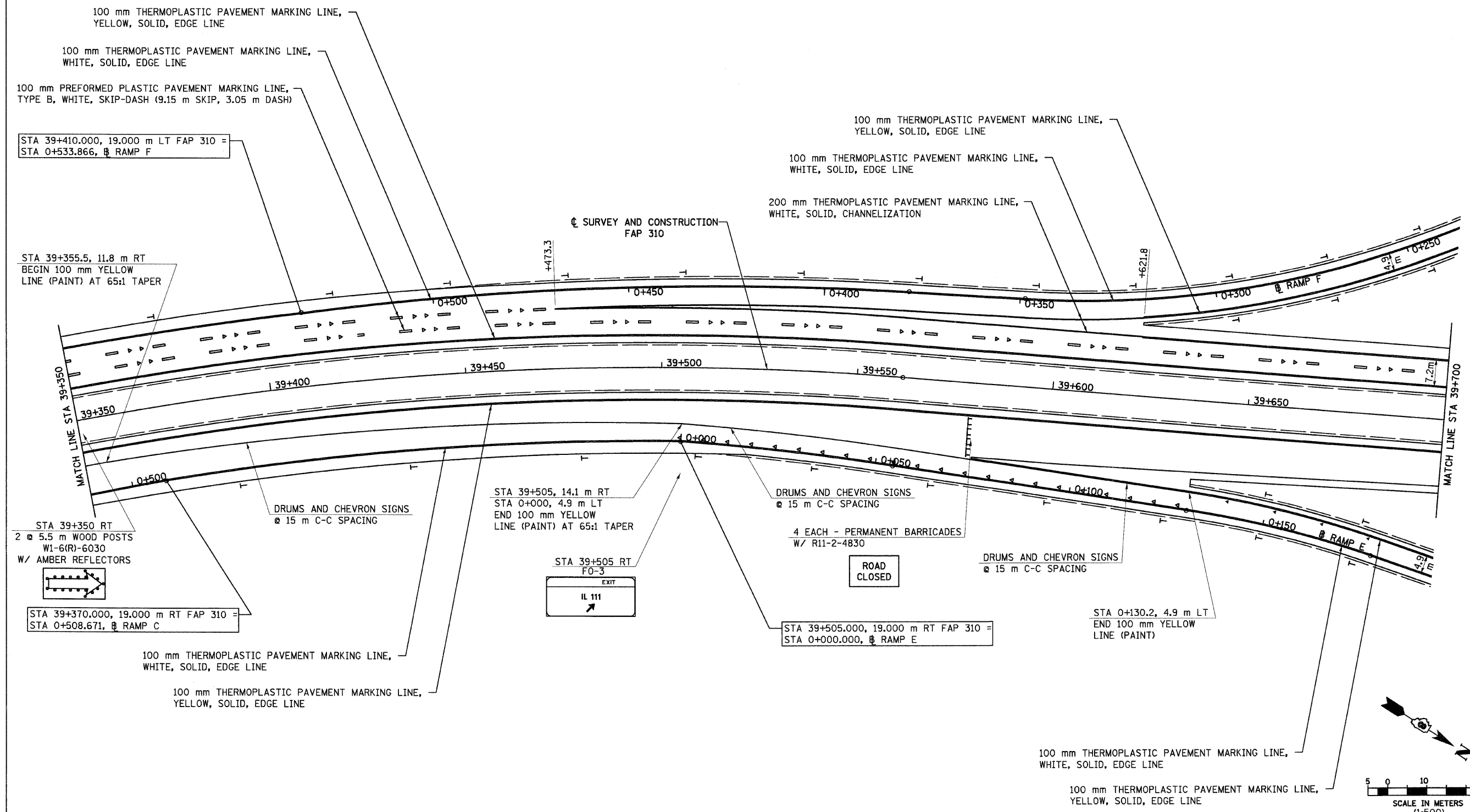
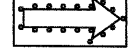


6/28/2007

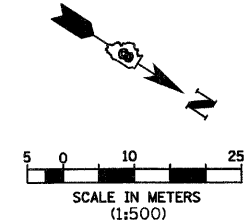
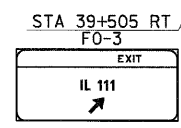
|                     |                           |         |              |           |
|---------------------|---------------------------|---------|--------------|-----------|
| F.A.P. RTE.         | SECTION                   | COUNTY  | TOTAL SHEETS | SHEET NO. |
| 310                 | 60-15, 60-15B             | MADISON | 474          | 179       |
| STA.                | TO STA.                   |         |              |           |
| FED. ROAD DIST. NO. | ILLINOIS FED. AID PROJECT |         |              |           |
| CONTRACT NO. 76323  |                           |         |              |           |



STA 39+350 RT  
2 @ 5.5 m WOOD POSTS  
W1-6(R)-6030  
W/ AMBER REFLECTORS



STA 39+370.000, 19.000 m RT FAP 310 = STA 0+508.671, RAMP C



**LEGEND**

- ▶ ONE-WAY AMBER RAISED REFLECTIVE PAVEMENT MARKER
- ▷ ONE-WAY CRYSTAL RAISED REFLECTIVE PAVEMENT MARKER
- ┆ DELINEATOR

| REVISIONS |      |
|-----------|------|
| NAME      | DATE |
|           |      |
|           |      |
|           |      |
|           |      |
|           |      |
|           |      |
|           |      |
|           |      |

ILLINOIS DEPARTMENT OF TRANSPORTATION  
**PAVEMENT MARKING PLAN**  
**FAP 310 (IL 255)**  
**SECTION 60-15**  
**MADISON COUNTY**  
 DRAWN BY EBB  
 CHECKED BY  
 DATE

IL 255 (FAP 310), STA 39+350 TO STA 39+700

p:\008files\0024\dmainline\pvm\marks\pvm\015a13.dgn