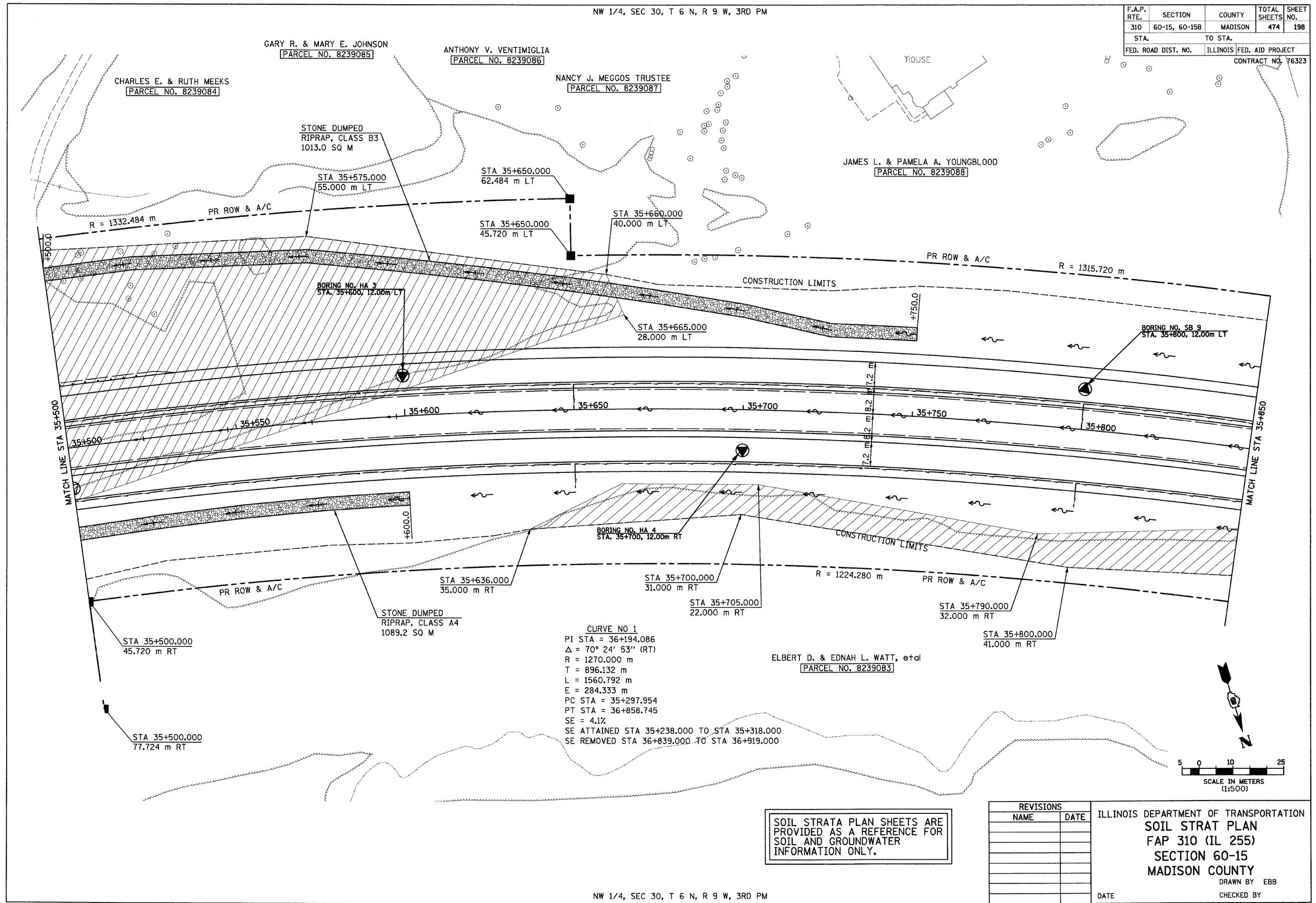


6/28/2007

NW 1/4, SEC 30, T 6 N, R 9 W, 3RD PM

F.A.P. RTE.	SECTION	COUNTY	TOTAL SHEETS	SHEET NO.
310	60-15, 60-15B	MADISON	474	198
STA.		TO STA.		
FED. ROAD DIST. NO.		ILLINOIS FED. AID PROJECT		CONTRACT NO. 76323



SOIL STRATA PLAN SHEETS ARE PROVIDED AS A REFERENCE FOR SOIL AND GROUNDWATER INFORMATION ONLY.

REVISIONS	
NAME	DATE

ILLINOIS DEPARTMENT OF TRANSPORTATION
SOIL STRAT PLAN
FAP 310 (IL 255)
SECTION 60-15
MADISON COUNTY
 DRAWN BY EBB
 CHECKED BY
 DATE
 IL 255 (FAP 310), STA 35+500 TO STA 35+850

NW 1/4, SEC 30, T 6 N, R 9 W, 3RD PM

p:\00files\00024\dmr\line\soils\strata\plan015a02.dgn