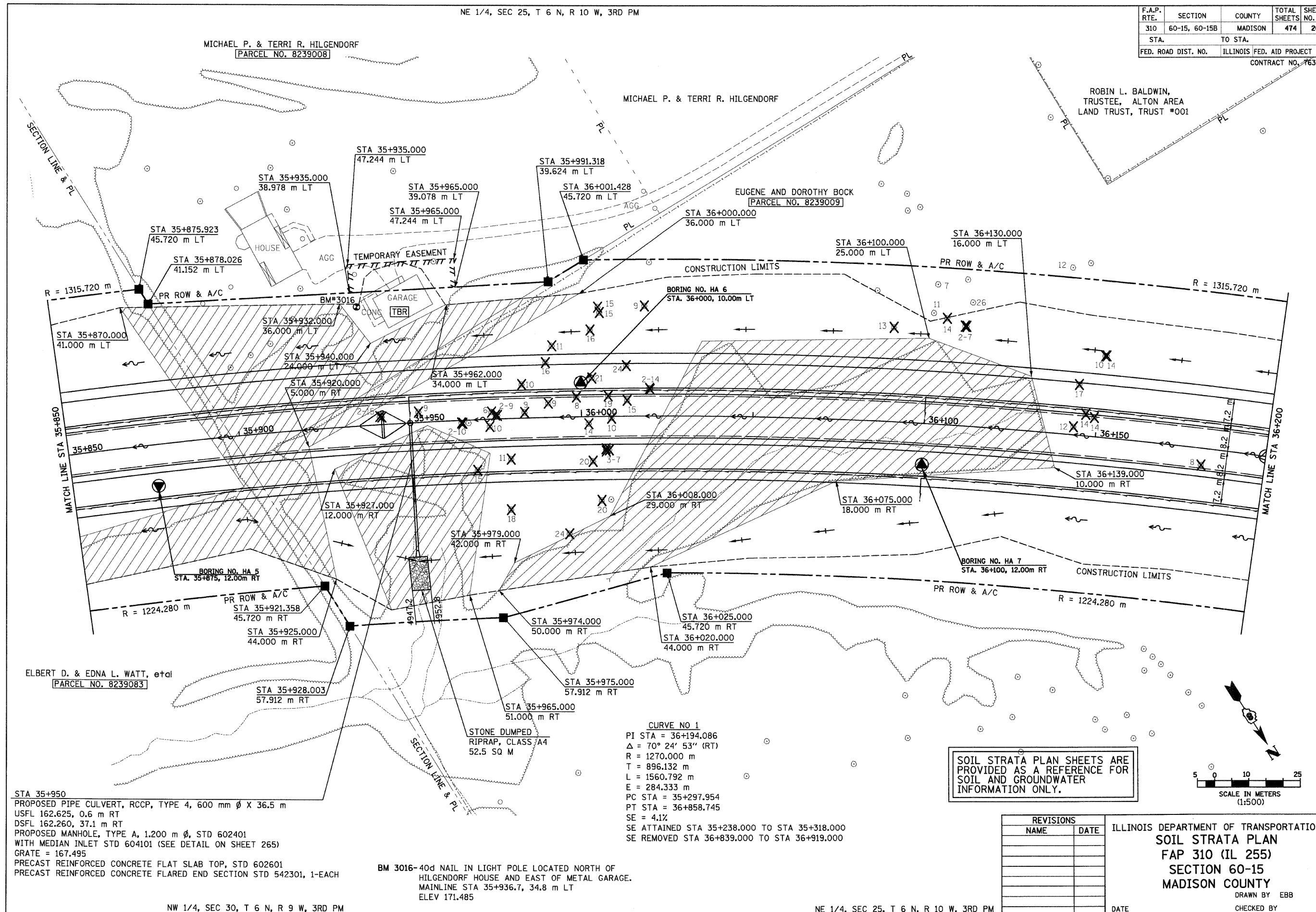


6/28/2007

NE 1/4, SEC 25, T 6 N, R 10 W, 3RD PM

F.A.P. RTE.	SECTION	COUNTY	TOTAL SHEETS	SHEET NO.
310	60-15, 60-15B	MADISON	474	200
STA.		TO STA.		
FED. ROAD DIST. NO.		ILLINOIS FED. AID PROJECT		
CONTRACT NO. 76323				

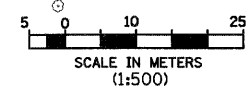


STA 35+950
 PROPOSED PIPE CULVERT, RCCP, TYPE 4, 600 mm Ø X 36.5 m
 USFL 162.625, 0.6 m RT
 DSFL 162.260, 37.1 m RT
 PROPOSED MANHOLE, TYPE A, 1.200 m Ø, STD 602401
 WITH MEDIAN INLET STD 604101 (SEE DETAIL ON SHEET 265)
 GRATE = 167.495
 PRECAST REINFORCED CONCRETE FLAT SLAB TOP, STD 602601
 PRECAST REINFORCED CONCRETE FLARED END SECTION STD 542301, 1-EACH

BM 3016-40d NAIL IN LIGHT POLE LOCATED NORTH OF
 HILGENDORF HOUSE AND EAST OF METAL GARAGE.
 MAINLINE STA 35+936.7, 34.8 m LT
 ELEV 171.485

CURVE NO 1
 PI STA = 36+194.086
 Δ = 70° 24' 53" (RT)
 R = 1270.000 m
 T = 896.132 m
 L = 1560.792 m
 E = 284.333 m
 PC STA = 35+297.954
 PT STA = 36+858.745
 SE = 4.1%
 SE ATTAINED STA 35+238.000 TO STA 35+318.000
 SE REMOVED STA 36+839.000 TO STA 36+919.000

SOIL STRATA PLAN SHEETS ARE PROVIDED AS A REFERENCE FOR SOIL AND GROUNDWATER INFORMATION ONLY.



REVISIONS	
NAME	DATE

ILLINOIS DEPARTMENT OF TRANSPORTATION
SOIL STRATA PLAN
FAP 310 (IL 255)
SECTION 60-15
MADISON COUNTY
 DRAWN BY EBB
 CHECKED BY
 DATE

pi:\002files\000224\dmainline\soils\tr-ato\plan\015s03.dgn

NW 1/4, SEC 30, T 6 N, R 9 W, 3RD PM

NE 1/4, SEC 25, T 6 N, R 10 W, 3RD PM

IL 255 (FAP 310), STA 35+850 TO STA 36+200