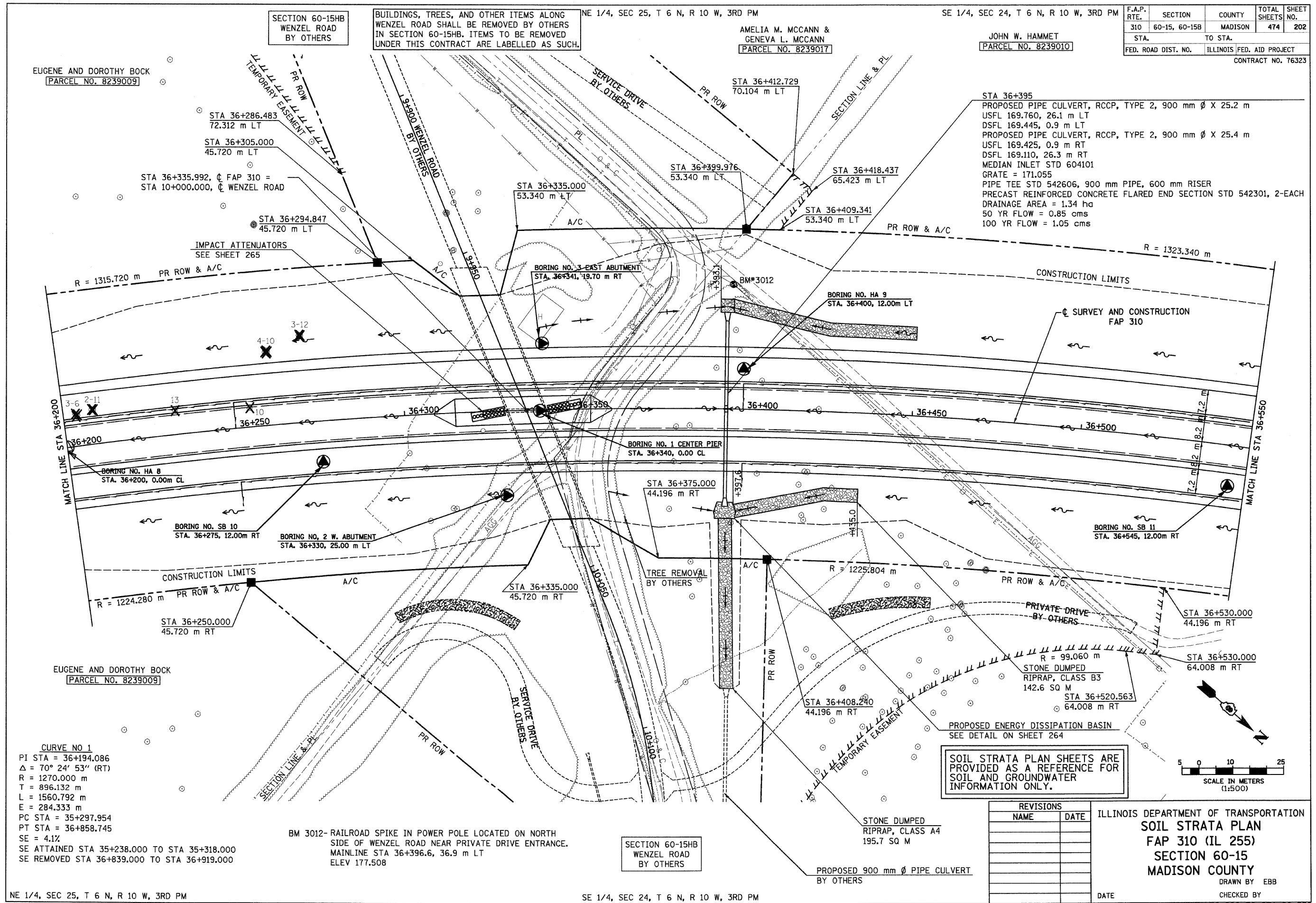


6/28/2007

p:\008files\00024\dmainline\soilsr-ata\plan015a04.dgn



SECTION 60-15HB
WENZEL ROAD
BY OTHERS

BUILDINGS, TREES, AND OTHER ITEMS ALONG
WENZEL ROAD SHALL BE REMOVED BY OTHERS
IN SECTION 60-15HB. ITEMS TO BE REMOVED
UNDER THIS CONTRACT ARE LABELLED AS SUCH.

NE 1/4, SEC 25, T 6 N, R 10 W, 3RD PM

AMELIA M. MCCANN &
GENEVA L. MCCANN
[PARCEL NO. 8239017]

SE 1/4, SEC 24, T 6 N, R 10 W, 3RD PM

JOHN W. HAMMET
[PARCEL NO. 8239010]

F.A.P. RTE.	SECTION	COUNTY	TOTAL SHEETS	SHEET NO.
310	60-15, 60-15B	MADISON	474	202
STA.		TO STA.		
FED. ROAD DIST. NO.		ILLINOIS FED. AID PROJECT		
CONTRACT NO. 76323				

STA 36+395
PROPOSED PIPE CULVERT, RCCP, TYPE 2, 900 mm Ø X 25.2 m
USFL 169.760, 26.1 m LT
DSFL 169.445, 0.9 m LT
PROPOSED PIPE CULVERT, RCCP, TYPE 2, 900 mm Ø X 25.4 m
USFL 169.425, 0.9 m RT
DSFL 169.110, 26.3 m RT
MEDIAN INLET STD 604101
GRATE = 171.055
PIPE TEE STD 542606, 900 mm PIPE, 600 mm RISER
PRECAST REINFORCED CONCRETE FLARED END SECTION STD 542301, 2-EACH
DRAINAGE AREA = 1.34 ha
50 YR FLOW = 0.85 cms
100 YR FLOW = 1.05 cms

CURVE NO 1
PI STA = 36+194.086
Δ = 70° 24' 53" (RT)
R = 1270.000 m
T = 896.132 m
L = 1560.792 m
E = 284.333 m
PC STA = 35+297.954
PT STA = 36+858.745
SE = 4.1%
SE ATTAINED STA 35+238.000 TO STA 35+318.000
SE REMOVED STA 36+839.000 TO STA 36+919.000

BM 3012- RAILROAD SPIKE IN POWER POLE LOCATED ON NORTH
SIDE OF WENZEL ROAD NEAR PRIVATE DRIVE ENTRANCE.
MAINLINE STA 36+396.6, 36.9 m LT
ELEV 177.508

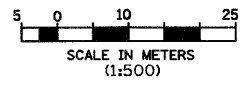
SECTION 60-15HB
WENZEL ROAD
BY OTHERS

SOIL STRATA PLAN SHEETS ARE
PROVIDED AS A REFERENCE FOR
SOIL AND GROUNDWATER
INFORMATION ONLY.

REVISIONS	
NAME	DATE

ILLINOIS DEPARTMENT OF TRANSPORTATION
SOIL STRATA PLAN
FAP 310 (IL 255)
SECTION 60-15
MADISON COUNTY

DRAWN BY EBB
CHECKED BY
DATE



NE 1/4, SEC 25, T 6 N, R 10 W, 3RD PM

SE 1/4, SEC 24, T 6 N, R 10 W, 3RD PM

IL 255 (FAP 310), STA 36+200 TO STA 36+550