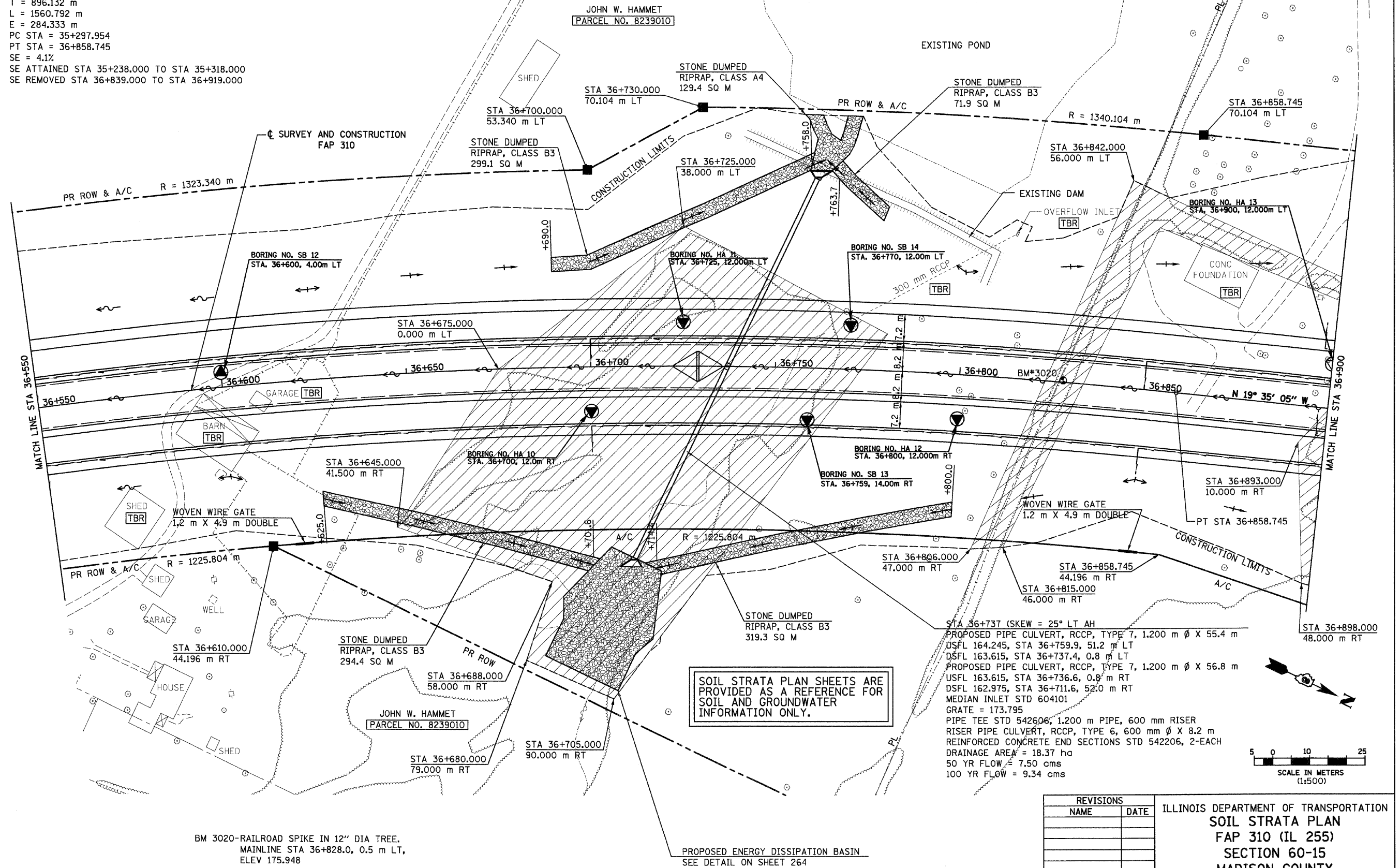


6/28/2007

SE 1/4, SEC 24, T 6 N, R 10 W, 3RD PM

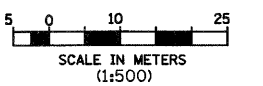
F.A.P. RTE.	SECTION	COUNTY	TOTAL SHEETS	SHEET NO.
310	60-15, 60-15B	MADISON	474	204
STA.		TO STA.		
FED. ROAD DIST. NO.		ILLINOIS FED. AID PROJECT		
CONTRACT NO. 76323				

CURVE NO 1
 PI STA = 36+194.086
 $\Delta = 70^\circ 24' 53''$ (RT)
 R = 1270.000 m
 T = 896.132 m
 L = 1560.792 m
 E = 284.333 m
 PC STA = 35+297.954
 PT STA = 36+858.745
 SE = 4.1%
 SE ATTAINED STA 35+238.000 TO STA 35+318.000
 SE REMOVED STA 36+839.000 TO STA 36+919.000



SOIL STRATA PLAN SHEETS ARE PROVIDED AS A REFERENCE FOR SOIL AND GROUNDWATER INFORMATION ONLY.

STA 36+737 (SKEW = 25° LT AH)
 PROPOSED PIPE CULVERT, RCCP, TYPE 7, 1,200 m Ø X 55.4 m
 USFL 164.245, STA 36+759.9, 51.2 m LT
 DSFL 163.615, STA 36+737.4, 0.8 m LT
 PROPOSED PIPE CULVERT, RCCP, TYPE 7, 1,200 m Ø X 56.8 m
 USFL 163.615, STA 36+736.6, 0.8 m RT
 DSFL 162.975, STA 36+711.6, 52.0 m RT
 MEDIAN INLET STD 604101
 GRATE = 173.795
 PIPE TEE STD 542606, 1,200 m PIPE, 600 mm RISER
 RISER PIPE CULVERT, RCCP, TYPE 6, 600 mm Ø X 8.2 m
 REINFORCED CONCRETE END SECTIONS STD 542206, 2-EACH
 DRAINAGE AREA = 18.37 ha
 50 YR FLOW = 7.50 cms
 100 YR FLOW = 9.34 cms



BM 3020-RAILROAD SPIKE IN 12" DIA TREE,
 MAINLINE STA 36+828.0, 0.5 m LT,
 ELEV 175.948

PROPOSED ENERGY DISSIPATION BASIN
 SEE DETAIL ON SHEET 264

REVISIONS	
NAME	DATE

ILLINOIS DEPARTMENT OF TRANSPORTATION
 SOIL STRATA PLAN
 FAP 310 (IL 255)
 SECTION 60-15
 MADISON COUNTY
 DRAWN BY EBB
 CHECKED BY
 DATE
 IL 255 (FAP 310), STA 36+550 TO STA 36+900

SE 1/4, SEC 24, T 6 N, R 10 W, 3RD PM

p:\007iles\00024\mainline\soilstrata\plan015a\05.dgn