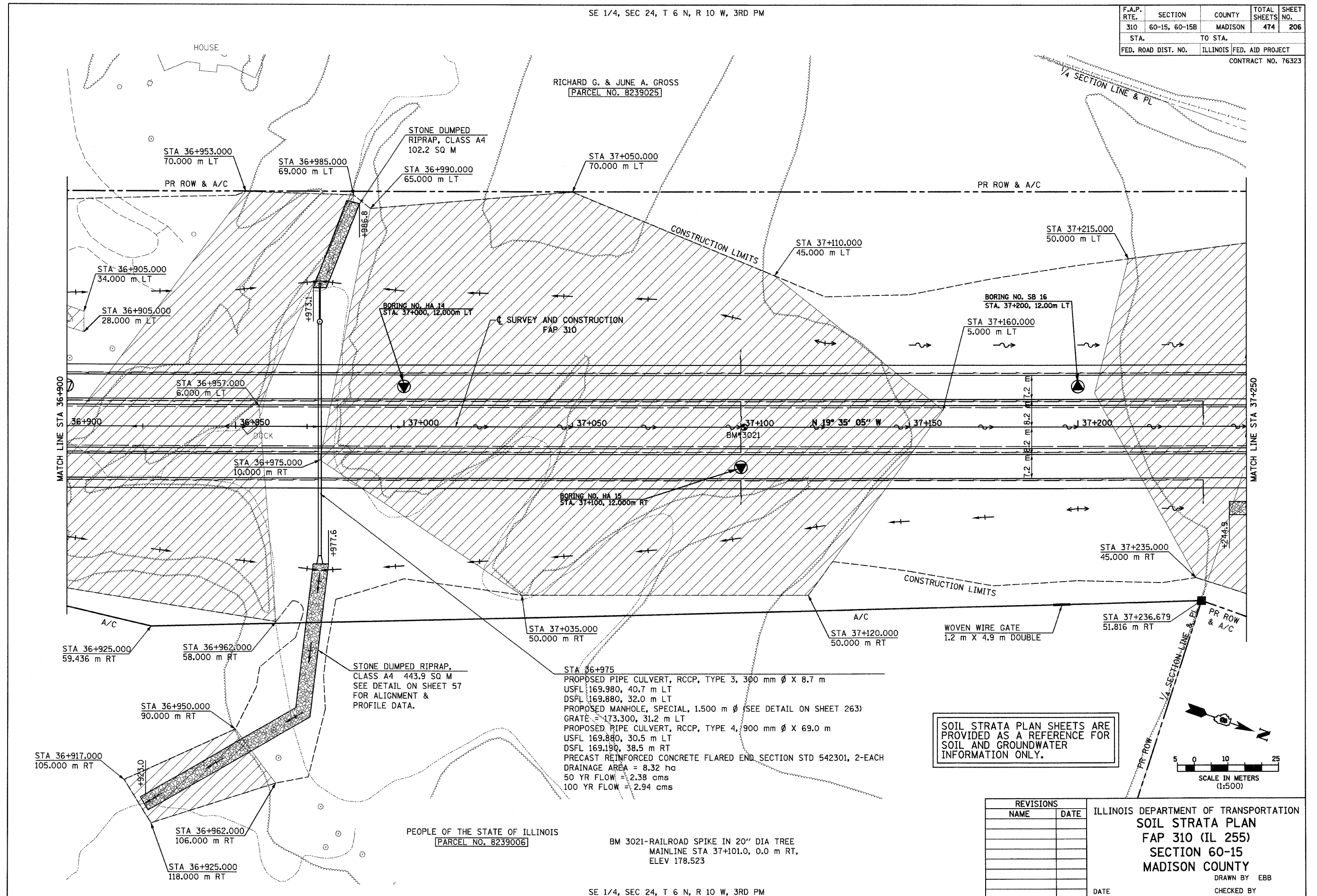


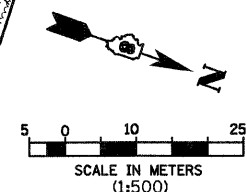
6/28/2007

SE 1/4, SEC 24, T 6 N, R 10 W, 3RD PM

F.A.P. RTE.	SECTION	COUNTY	TOTAL SHEETS	SHEET NO.
310	60-15, 60-15B	MADISON	474	206
STA.		TO STA.		
FED. ROAD DIST. NO.		ILLINOIS FED. AID PROJECT		
CONTRACT NO. 76323				



SOIL STRATA PLAN SHEETS ARE PROVIDED AS A REFERENCE FOR SOIL AND GROUNDWATER INFORMATION ONLY.



REVISIONS	
NAME	DATE

ILLINOIS DEPARTMENT OF TRANSPORTATION  
**SOIL STRATA PLAN**  
**FAP 310 (IL 255)**  
**SECTION 60-15**  
**MADISON COUNTY**  
 DRAWN BY EBB  
 CHECKED BY  
 DATE

SE 1/4, SEC 24, T 6 N, R 10 W, 3RD PM

p:\00files\02024\dmainline\soils\strata\plan\15a\06.dgn