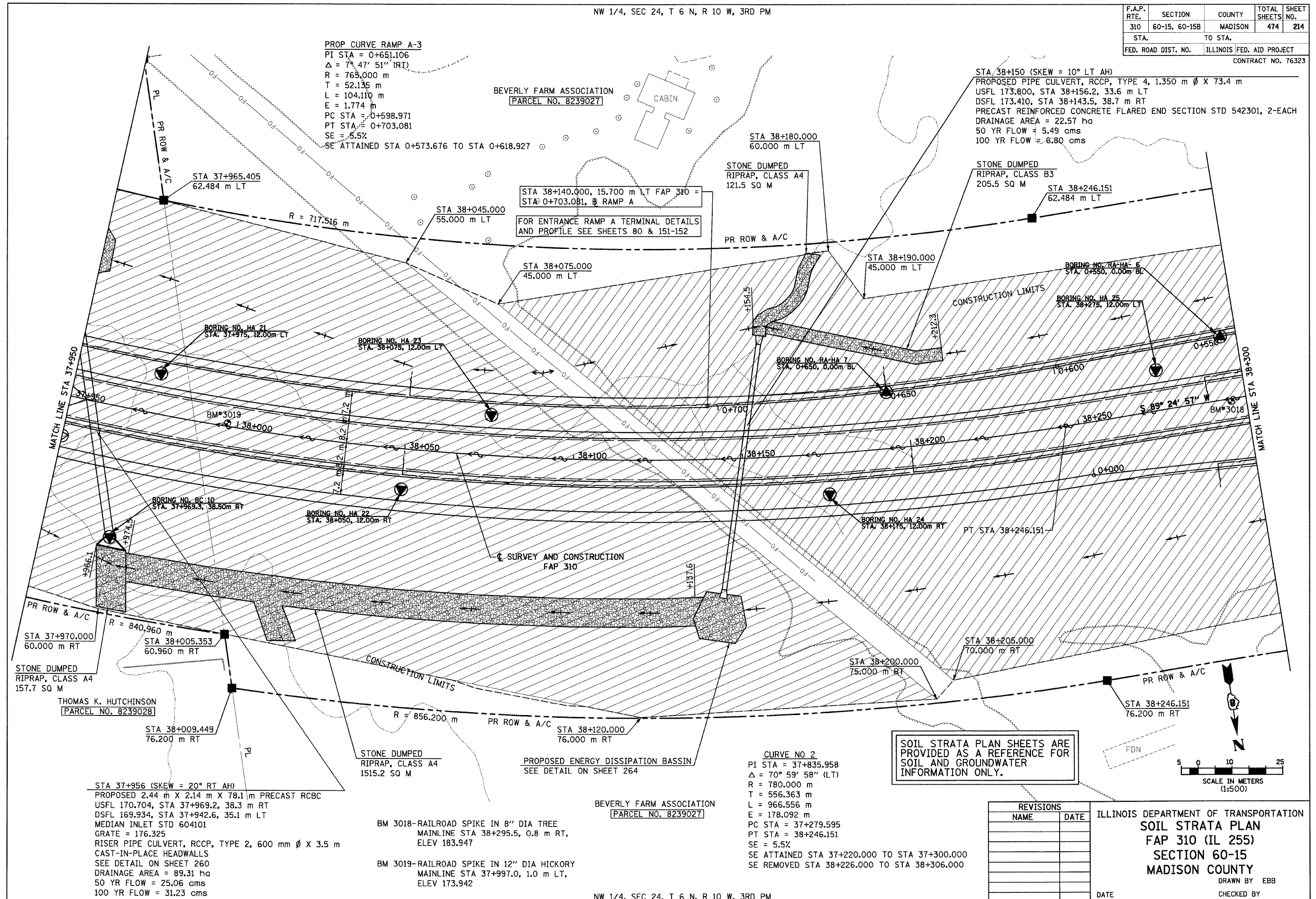


6/28/2007

NW 1/4, SEC 24, T 6 N, R 10 W, 3RD PM

F.A.P. RTE.	SECTION	COUNTY	TOTAL SHEETS NO.	SHEET NO.
310	60-15, 60-15B	MADISON	474	214
STA.		TO STA.		
FED. ROAD DIST. NO.		ILLINOIS FED. AID PROJECT		
CONTRACT NO. 76323				



p:\2007\105\00024\dmainline\soilstrata\plan\15a09.dgn