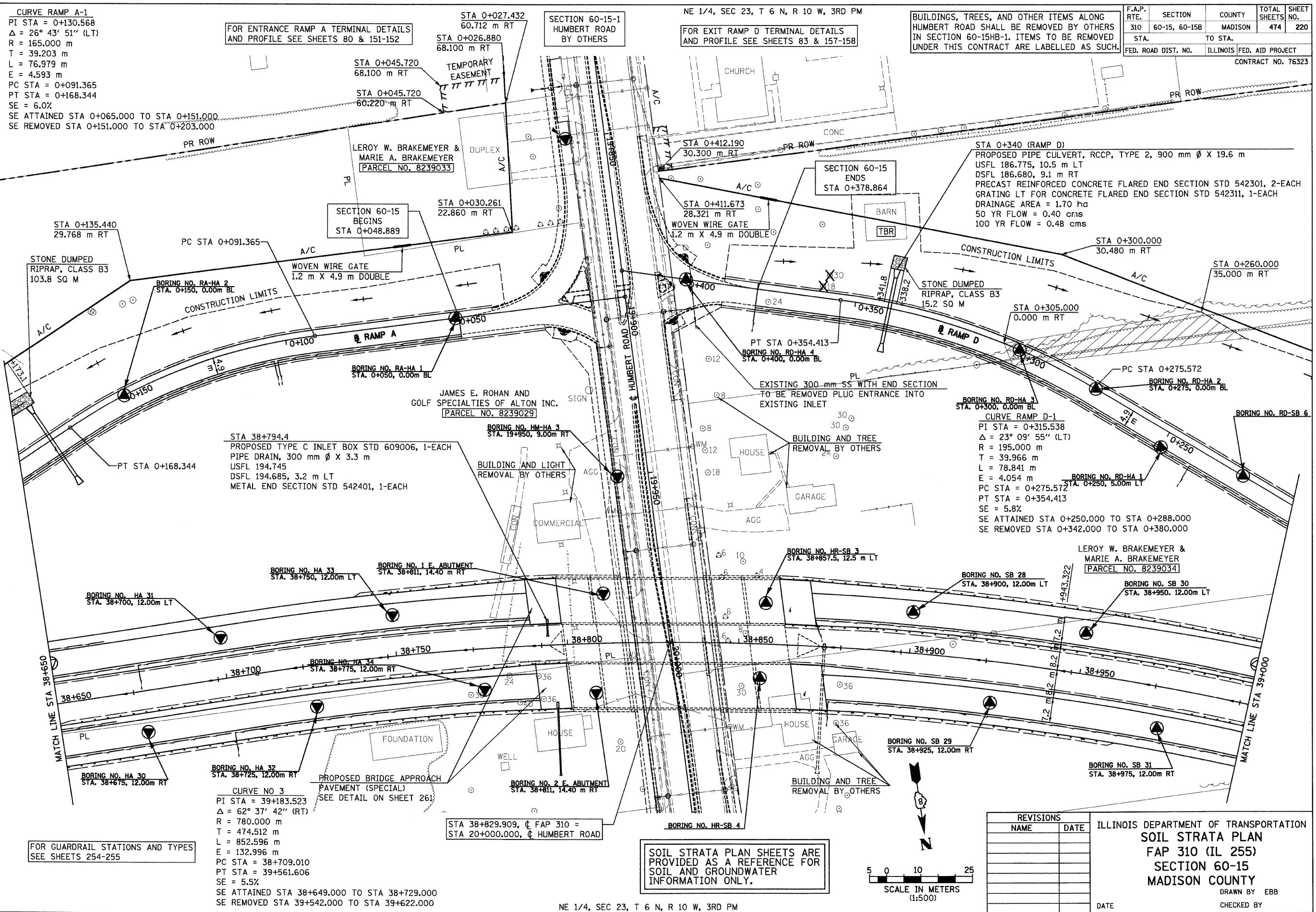


6/28/2007



CURVE RAMP A-1
 PI STA = 0+130.568
 $\Delta = 26^\circ 43' 51''$ (LT)
 R = 165.000 m
 T = 39.203 m
 L = 76.979 m
 E = 4.593 m
 PC STA = 0+091.365
 PT STA = 0+168.344
 SE = 6.0%
 SE ATTAINED STA 0+065.000 TO STA 0+151.000
 SE REMOVED STA 0+151.000 TO STA 0+203.000

FOR ENTRANCE RAMP A TERMINAL DETAILS AND PROFILE SEE SHEETS 80 & 151-152

SECTION 60-15-1 HUMBERT ROAD BY OTHERS

FOR EXIT RAMP D TERMINAL DETAILS AND PROFILE SEE SHEETS 83 & 157-158

BUILDINGS, TREES, AND OTHER ITEMS ALONG HUMBERT ROAD SHALL BE REMOVED BY OTHERS IN SECTION 60-15HB-1. ITEMS TO BE REMOVED UNDER THIS CONTRACT ARE LABELLED AS SUCH.

F.A.P. RTE.	SECTION	COUNTY	TOTAL SHEETS	SHEET NO.
310	60-15, 60-15B	MADISON	474	220
STA. TO STA.		ILLINOIS FED. AID PROJECT		
FED. ROAD DIST. NO.		CONTRACT NO. 76323		

STONE DUMPED RIPRAP, CLASS B3 103.8 SQ M

BORING NO. RA-HA 2 STA. 0+150, 0.00m BL

SECTION 60-15 BEGINS STA 0+048.889

STA 0+030.261 22.860 m RT

STA 0+412.190 30.300 m RT

SECTION 60-15 ENDS STA 0+378.864

STA 0+340 (RAMP D) PROPOSED PIPE CULVERT, RCCP, TYPE 2, 900 mm ϕ X 19.6 m USFL 186.775, 10.5 m LT DSFL 186.680, 9.1 m RT PRECAST REINFORCED CONCRETE FLARED END SECTION STD 542301, 2-EACH GRATING LT FOR CONCRETE FLARED END SECTION STD 542311, 1-EACH DRAINAGE AREA = 1.70 ha 50 YR FLOW = 0.40 cms 100 YR FLOW = 0.48 cms

STA 0+300.000 30.480 m RT

STA 0+260.000 35.000 m RT

BORING NO. RA-HA 1 STA. 0+050, 0.00m BL

JAMES E. ROHAN AND GOLF SPECIALTIES OF ALTON INC. (PARCEL NO. 8239029)

BORING NO. HM-HA 3 STA. 19+950, 9.00m RT

PT STA 0+354.413 BORING NO. RD-HA 4 STA. 0+400, 0.00m BL

EXISTING 300-mm SS WITH END SECTION TO BE REMOVED PLUG ENTRANCE INTO EXISTING INLET

BORING NO. RD-HA 3 STA. 0+300, 0.00m BL

CURVE RAMP D-1
 PI STA = 0+315.538
 $\Delta = 23^\circ 09' 55''$ (LT)
 R = 195.000 m
 T = 39.966 m
 L = 78.841 m
 E = 4.054 m
 PC STA = 0+275.572
 PT STA = 0+354.413
 SE = 5.8%
 SE ATTAINED STA 0+250.000 TO STA 0+288.000
 SE REMOVED STA 0+342.000 TO STA 0+380.000

BORING NO. RD-HA 1 STA. 0+250, 5.00m LT

LEROY W. BRAKEMEYER & MARIE A. BRAKEMEYER (PARCEL NO. 8239034)

BORING NO. SB 28 STA. 38+900, 12.00m LT

BORING NO. SB 30 STA. 38+950, 12.00m LT

BORING NO. HA 31 STA. 38+700, 12.00m LT

BORING NO. HA 33 STA. 38+750, 12.00m LT

BORING NO. 1 E. ABUTMENT STA. 38+811, 14.40 m RT

BORING NO. HR-SB 3 STA. 38+857.5, 12.5 m LT

BORING NO. SB 28 STA. 38+900, 12.00m LT

BORING NO. SB 30 STA. 38+950, 12.00m LT

BORING NO. HA 30 STA. 38+615, 12.00m RT

BORING NO. HA 32 STA. 38+725, 12.00m RT

PROPOSED BRIDGE APPROACH PAVEMENT (SPECIAL) SEE DETAIL ON SHEET 261

BORING NO. 2 E. ABUTMENT STA. 38+811, 14.40 m RT

BORING NO. HR-SB 4

STA 38+829.909, ϕ FAP 310 = STA 20+000.000, ϕ HUMBERT ROAD

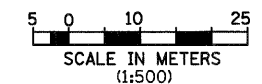
BORING NO. SB 29 STA. 38+925, 12.00m RT

BORING NO. SB 31 STA. 38+975, 12.00m RT

FOR GUARDRAIL STATIONS AND TYPES SEE SHEETS 254-255

CURVE NO 3
 PI STA = 39+183.523
 $\Delta = 62^\circ 37' 42''$ (RT)
 R = 780.000 m
 T = 474.512 m
 L = 852.596 m
 E = 132.996 m
 PC STA = 38+709.010
 PT STA = 39+561.606
 SE = 5.5%
 SE ATTAINED STA 38+649.000 TO STA 38+729.000
 SE REMOVED STA 39+542.000 TO STA 39+622.000

SOIL STRATA PLAN SHEETS ARE PROVIDED AS A REFERENCE FOR SOIL AND GROUNDWATER INFORMATION ONLY.



REVISIONS	
NAME	DATE

ILLINOIS DEPARTMENT OF TRANSPORTATION
 SOIL STRATA PLAN
 FAP 310 (IL 255)
 SECTION 60-15
 MADISON COUNTY

DATE _____ DRAWN BY EBB
 CHECKED BY _____

IL 255 (FAP 310), STA 38+650 TO STA 39+000

p:\00f.iles\00024\admainline\soils\strata\plan\015ell.dgn

NE 1/4, SEC 23, T 6 N, R 10 W, 3RD PM