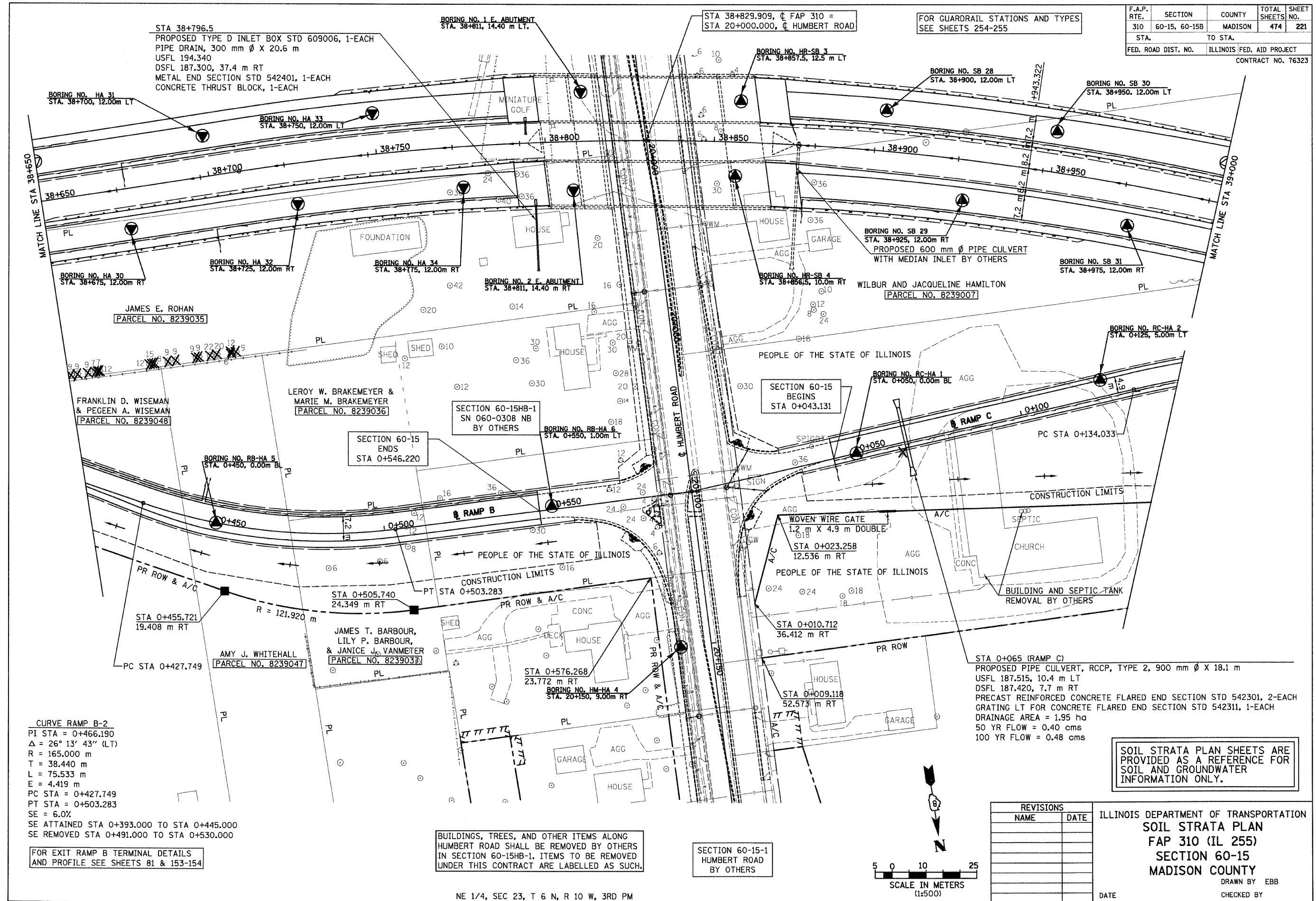


6/28/2007

F.A.P. RTE.	SECTION	COUNTY	TOTAL SHEETS	SHEET NO.
310	60-15, 60-15B	MADISON	474	221
STA.		TO STA.		
FED. ROAD DIST. NO.		ILLINOIS FED. AID PROJECT		
CONTRACT NO. 76323				

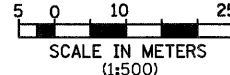


**CURVE RAMP B-2**  
 PI STA = 0+466.190  
 $\Delta = 26^\circ 13' 43''$  (LT)  
 R = 165.000 m  
 T = 38.440 m  
 L = 75.533 m  
 E = 4.419 m  
 PC STA = 0+427.749  
 PT STA = 0+503.283  
 SE = 6.0%  
 SE ATTAINED STA 0+393.000 TO STA 0+445.000  
 SE REMOVED STA 0+491.000 TO STA 0+530.000

FOR EXIT RAMP B TERMINAL DETAILS AND PROFILE SEE SHEETS 81 & 153-154

BUILDINGS, TREES, AND OTHER ITEMS ALONG HUMBERT ROAD SHALL BE REMOVED BY OTHERS IN SECTION 60-15HB-1. ITEMS TO BE REMOVED UNDER THIS CONTRACT ARE LABELLED AS SUCH.

SECTION 60-15-1 HUMBERT ROAD BY OTHERS



REVISIONS	
NAME	DATE

SOIL STRATA PLAN SHEETS ARE PROVIDED AS A REFERENCE FOR SOIL AND GROUNDWATER INFORMATION ONLY.

ILLINOIS DEPARTMENT OF TRANSPORTATION  
**SOIL STRATA PLAN**  
**FAP 310 (IL 255)**  
**SECTION 60-15**  
**MADISON COUNTY**

DRAWN BY EBB  
 CHECKED BY  
 DATE

IL 255 (FAP 310), STA 38+650 TO STA 39+000

p:\00files\00024\mainline\soilstrata\plan\015a1.dgn