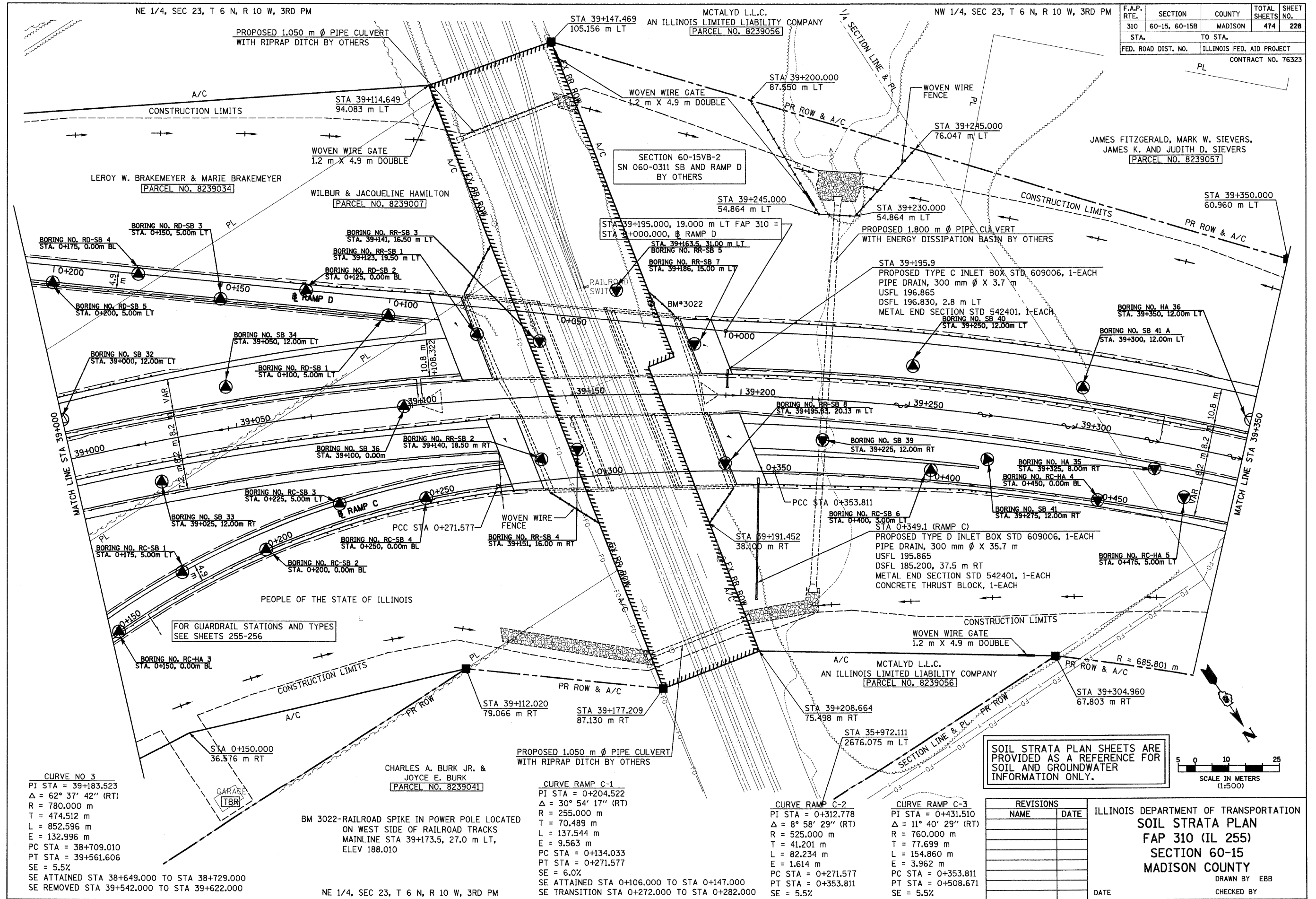


6/28/2007



F.A.P. RTE.	SECTION	COUNTY	TOTAL SHEETS NO.
310	60-15, 60-15B	MADISON	474 228
STA.	TO STA.		
FED. ROAD DIST. NO.	ILLINOIS FED. AID PROJECT		
	CONTRACT NO. 76323		

CURVE NO 3
 PI STA = 39+183.523
 Δ = 62° 37' 42" (RT)
 R = 780.000 m
 T = 474.512 m
 L = 852.596 m
 E = 132.996 m
 PC STA = 38+709.010
 PT STA = 39+561.606
 SE = 5.5%
 SE ATTAINED STA 38+649.000 TO STA 38+729.000
 SE REMOVED STA 39+542.000 TO STA 39+622.000

BM 3022-RAILROAD SPIKE IN POWER POLE LOCATED ON WEST SIDE OF RAILROAD TRACKS MAINLINE STA 39+173.5, 27.0 m LT, ELEV 188.010

CURVE RAMP C-1
 PI STA = 0+204.522
 Δ = 30° 54' 17" (RT)
 R = 255.000 m
 T = 70.489 m
 L = 137.544 m
 E = 9.563 m
 PC STA = 0+134.033
 PT STA = 0+271.577
 SE = 6.0%
 SE ATTAINED STA 0+106.000 TO STA 0+147.000
 SE TRANSITION STA 0+272.000 TO STA 0+282.000

CURVE RAMP C-2
 PI STA = 0+312.778
 Δ = 8° 58' 29" (RT)
 R = 525.000 m
 T = 41.201 m
 L = 82.234 m
 E = 1.614 m
 PC STA = 0+271.577
 PT STA = 0+353.811
 SE = 5.5%

CURVE RAMP C-3
 PI STA = 0+431.510
 Δ = 11° 40' 29" (RT)
 R = 760.000 m
 T = 77.699 m
 L = 154.860 m
 E = 3.962 m
 PC STA = 0+353.811
 PT STA = 0+508.671
 SE = 5.5%

SOIL STRATA PLAN SHEETS ARE PROVIDED AS A REFERENCE FOR SOIL AND GROUNDWATER INFORMATION ONLY.

REVISIONS	
NAME	DATE

ILLINOIS DEPARTMENT OF TRANSPORTATION
SOIL STRATA PLAN
FAP 310 (IL 255)
SECTION 60-15
MADISON COUNTY
 DRAWN BY EBB
 CHECKED BY
 DATE

IL 255 (FAP 310), STA 39+000 TO STA 39+350

p:\2007\1es\00024\dmain\line\soilstrata\plan015a12.dgn