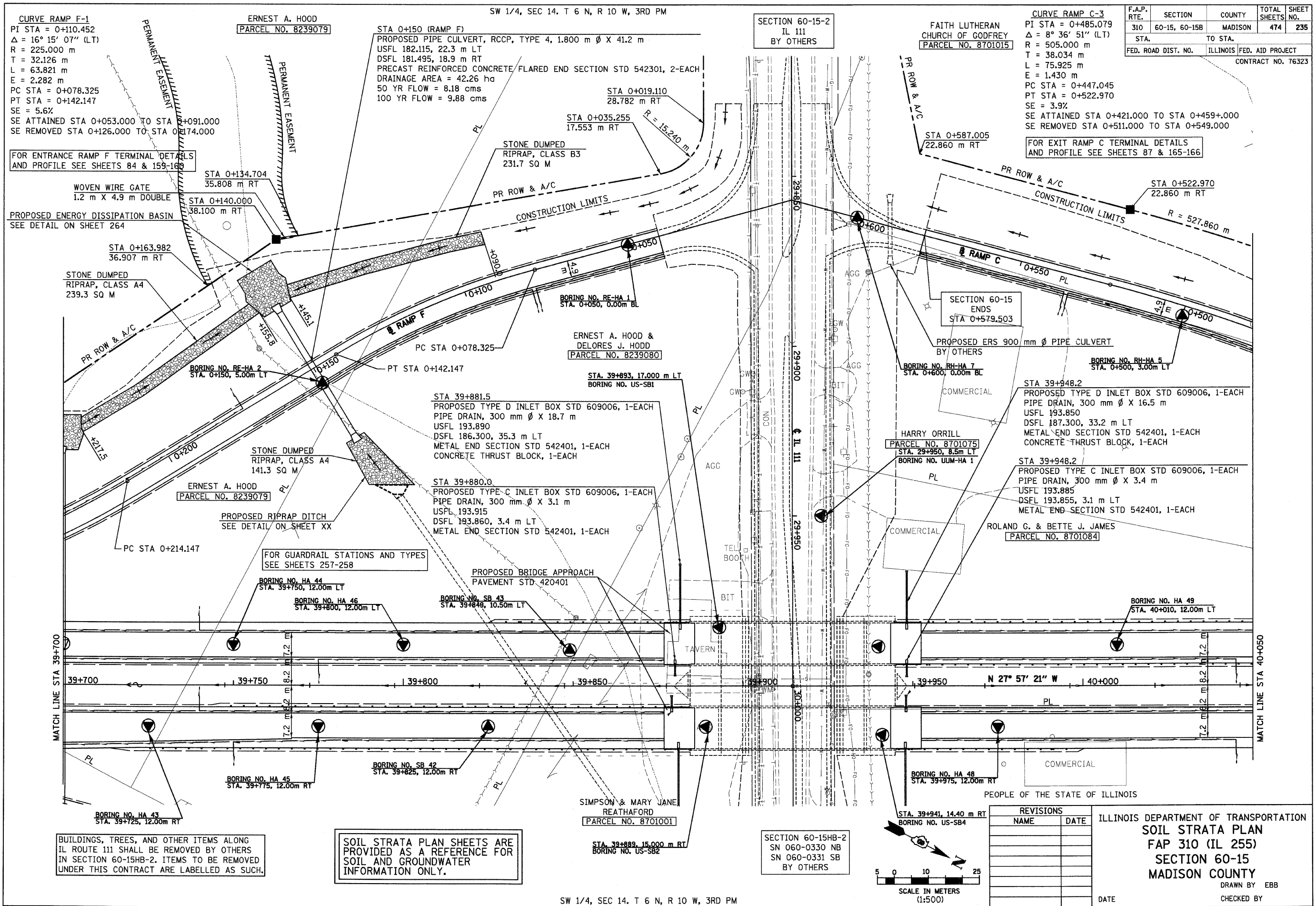


6/28/2007

p:\00files\00224\mainline\soilstrata\plan015a14.dgn



CURVE RAMP F-1
 PI STA = 0+110.452
 $\Delta = 16^\circ 15' 07''$ (LT)
 R = 225.000 m
 T = 32.126 m
 L = 63.821 m
 E = 2.282 m
 PC STA = 0+078.325
 PT STA = 0+142.147
 SE = 5.6%
 SE ATTAINED STA 0+053.000 TO STA 0+091.000
 SE REMOVED STA 0+126.000 TO STA 0+174.000

FOR ENTRANCE RAMP F TERMINAL DETAILS AND PROFILE SEE SHEETS 84 & 159-160

WOVEN WIRE GATE
 1.2 m X 4.9 m DOUBLE
 PROPOSED ENERGY DISSIPATION BASIN
 SEE DETAIL ON SHEET 264

STONE DUMPED RIPRAP, CLASS A4
 239.3 SQ M

ERNEST A. HOOD & DELORES J. HOOD
 (PARCEL NO. 8239080)

ERNEST A. HOOD
 (PARCEL NO. 8239079)

FOR GUARDRAIL STATIONS AND TYPES SEE SHEETS 257-258

PROPOSED BRIDGE APPROACH PAVEMENT STD. 420401

TAVERN

SIMPSON & MARY JANE REATHAFORD
 (PARCEL NO. 8701001)

SECTION 60-15HB-2
 SN 060-0330 NB
 SN 060-0331 SB
 BY OTHERS

BUILDINGS, TREES, AND OTHER ITEMS ALONG IL ROUTE 111 SHALL BE REMOVED BY OTHERS IN SECTION 60-15HB-2. ITEMS TO BE REMOVED UNDER THIS CONTRACT ARE LABELLED AS SUCH.

ERNEST A. HOOD
 (PARCEL NO. 8239079)

STA 0+150 (RAMP F)
 PROPOSED PIPE CULVERT, RCCP, TYPE 4, 1.800 m ϕ X 41.2 m
 USFL 182.115, 22.3 m LT
 DSFL 181.495, 18.9 m RT
 PRECAST REINFORCED CONCRETE FLARED END SECTION STD 542301, 2-EACH
 DRAINAGE AREA = 42.26 ha
 50 YR FLOW = 8.18 cms
 100 YR FLOW = 9.88 cms

STONE DUMPED RIPRAP, CLASS B3
 231.7 SQ M

STA 0+019.110
 28.782 m RT
 STA 0+035.255
 17.553 m RT
 R = 15240 m

BORING NO. RE-HA 1
 STA. 0+050, 0.00m BL

ERNEST A. HOOD & DELORES J. HOOD
 (PARCEL NO. 8239080)

STA. 39+893, 17.000 m LT
 BORING NO. US-SB1

STA 39+881.5
 PROPOSED TYPE D INLET BOX STD 609006, 1-EACH
 PIPE DRAIN, 300 mm ϕ X 18.7 m
 USFL 193.890
 DSFL 186.300, 35.3 m LT
 METAL END SECTION STD 542401, 1-EACH
 CONCRETE THRUST BLOCK, 1-EACH

STA 39+880.0
 PROPOSED TYPE C INLET BOX STD 609006, 1-EACH
 PIPE DRAIN, 300 mm ϕ X 3.1 m
 USFL 193.915
 DSFL 193.860, 3.4 m LT
 METAL END SECTION STD 542401, 1-EACH

FOR GUARDRAIL STATIONS AND TYPES SEE SHEETS 257-258

BORING NO. HA 44
 STA. 39+750, 12.00m LT

BORING NO. HA 46
 STA. 39+800, 12.00m LT

BORING NO. SB 43
 STA. 39+848, 10.50m LT

BORING NO. HA 45
 STA. 39+775, 12.00m RT

BORING NO. SB 42
 STA. 39+825, 12.00m RT

STA. 39+889, 15.000 m RT
 BORING NO. US-SB2

SECTION 60-15-2
 IL 111
 BY OTHERS

FAITH LUTHERAN CHURCH OF GODFREY
 (PARCEL NO. 8701015)

CURVE RAMP C-3
 PI STA = 0+485.079
 $\Delta = 8^\circ 36' 51''$ (LT)
 R = 505.000 m
 T = 38.034 m
 L = 75.925 m
 E = 1.430 m
 PC STA = 0+447.045
 PT STA = 0+522.970
 SE = 3.9%
 SE ATTAINED STA 0+421.000 TO STA 0+459+000
 SE REMOVED STA 0+511.000 TO STA 0+549.000

FOR EXIT RAMP C TERMINAL DETAILS AND PROFILE SEE SHEETS 87 & 165-166

STA 0+587.005
 22.860 m RT

SECTION 60-15 ENDS
 STA 0+579.503

PROPOSED ERS 900 mm ϕ PIPE CULVERT
 BY OTHERS

BORING NO. RH-HA 7
 STA. 0+600, 0.00m BL

HARRY ORRILL
 (PARCEL NO. 8701075)
 STA. 29+950, 8.5m LT
 BORING NO. UUM-HA 1

STA 39+948.2
 PROPOSED TYPE D INLET BOX STD 609006, 1-EACH
 PIPE DRAIN, 300 mm ϕ X 16.5 m
 USFL 193.850
 DSFL 187.300, 33.2 m LT
 METAL END SECTION STD 542401, 1-EACH
 CONCRETE THRUST BLOCK, 1-EACH

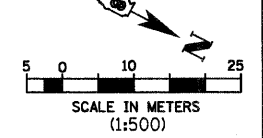
STA 39+948.2
 PROPOSED TYPE C INLET BOX STD 609006, 1-EACH
 PIPE DRAIN, 300 mm ϕ X 3.4 m
 USFL 193.885
 DSFL 193.855, 3.1 m LT
 METAL END SECTION STD 542401, 1-EACH

ROLAND G. & BETTE J. JAMES
 (PARCEL NO. 8701084)

BORING NO. HA 49
 STA. 40+010, 12.00m LT

BORING NO. HA 48
 STA. 39+975, 12.00m RT

STA. 39+941, 14.40 m RT
 BORING NO. US-SB4



REVISIONS	
NAME	DATE

ILLINOIS DEPARTMENT OF TRANSPORTATION
 SOIL STRATA PLAN
 FAP 310 (IL 255)
 SECTION 60-15
 MADISON COUNTY

DRAWN BY EBB
 CHECKED BY
 DATE

IL 255 (FAP 310), STA 39+700 TO STA 40+050

SW 1/4, SEC 14. T 6 N, R 10 W, 3RD PM