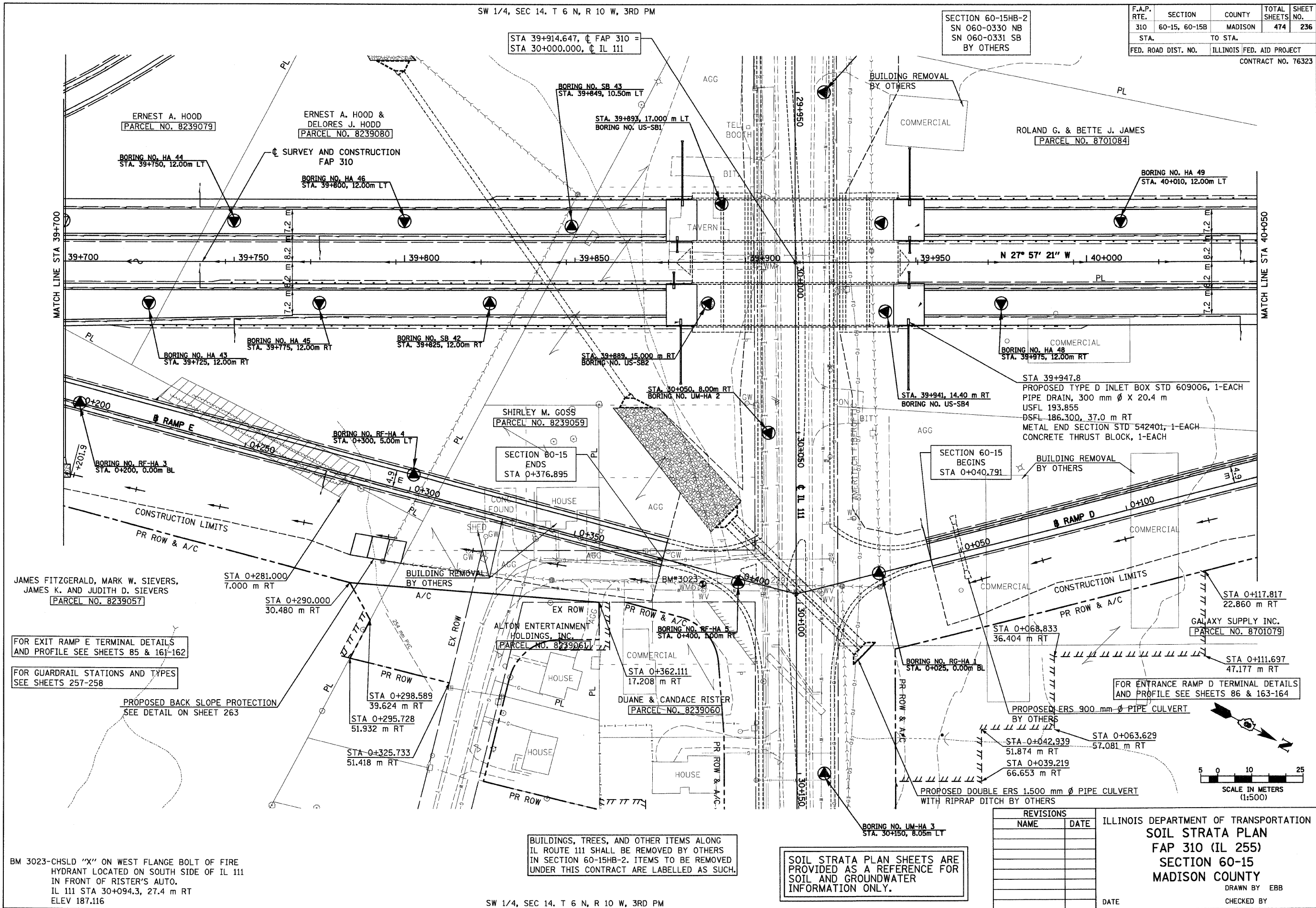


6/28/2007

SW 1/4, SEC 14, T 6 N, R 10 W, 3RD PM

SECTION 60-15HB-2
SN 060-0330 NB
SN 060-0331 SB
BY OTHERS

F.A.P. RTE.	SECTION	COUNTY	TOTAL SHEETS	SHEET NO.
310	60-15, 60-15B	MADISON	474	236
STA.		TO STA.		
FED. ROAD DIST. NO.		ILLINOIS FED. AID PROJECT		
CONTRACT NO. 76323				



FOR EXIT RAMP E TERMINAL DETAILS AND PROFILE SEE SHEETS 85 & 161-162

FOR GUARDRAIL STATIONS AND TYPES SEE SHEETS 257-258

PROPOSED BACK SLOPE PROTECTION SEE DETAIL ON SHEET 263

FOR ENTRANCE RAMP D TERMINAL DETAILS AND PROFILE SEE SHEETS 86 & 163-164

BM 3023-CHSLD "X" ON WEST FLANGE BOLT OF FIRE HYDRANT LOCATED ON SOUTH SIDE OF IL 111 IN FRONT OF RISTER'S AUTO. IL 111 STA 30+094.3, 27.4 m RT ELEV 187.116

BUILDINGS, TREES, AND OTHER ITEMS ALONG IL ROUTE 111 SHALL BE REMOVED BY OTHERS IN SECTION 60-15HB-2. ITEMS TO BE REMOVED UNDER THIS CONTRACT ARE LABELLED AS SUCH.

SOIL STRATA PLAN SHEETS ARE PROVIDED AS A REFERENCE FOR SOIL AND GROUNDWATER INFORMATION ONLY.

REVISIONS	
NAME	DATE

ILLINOIS DEPARTMENT OF TRANSPORTATION
SOIL STRATA PLAN
FAP 310 (IL 255)
SECTION 60-15
MADISON COUNTY

DRAWN BY EBB
CHECKED BY
DATE

SW 1/4, SEC 14, T 6 N, R 10 W, 3RD PM

IL 255 (FAP 310), STA 39+700 TO STA 40+050

p:\00f\files\000224\dmainline\soilstrata\plan015014.dgn