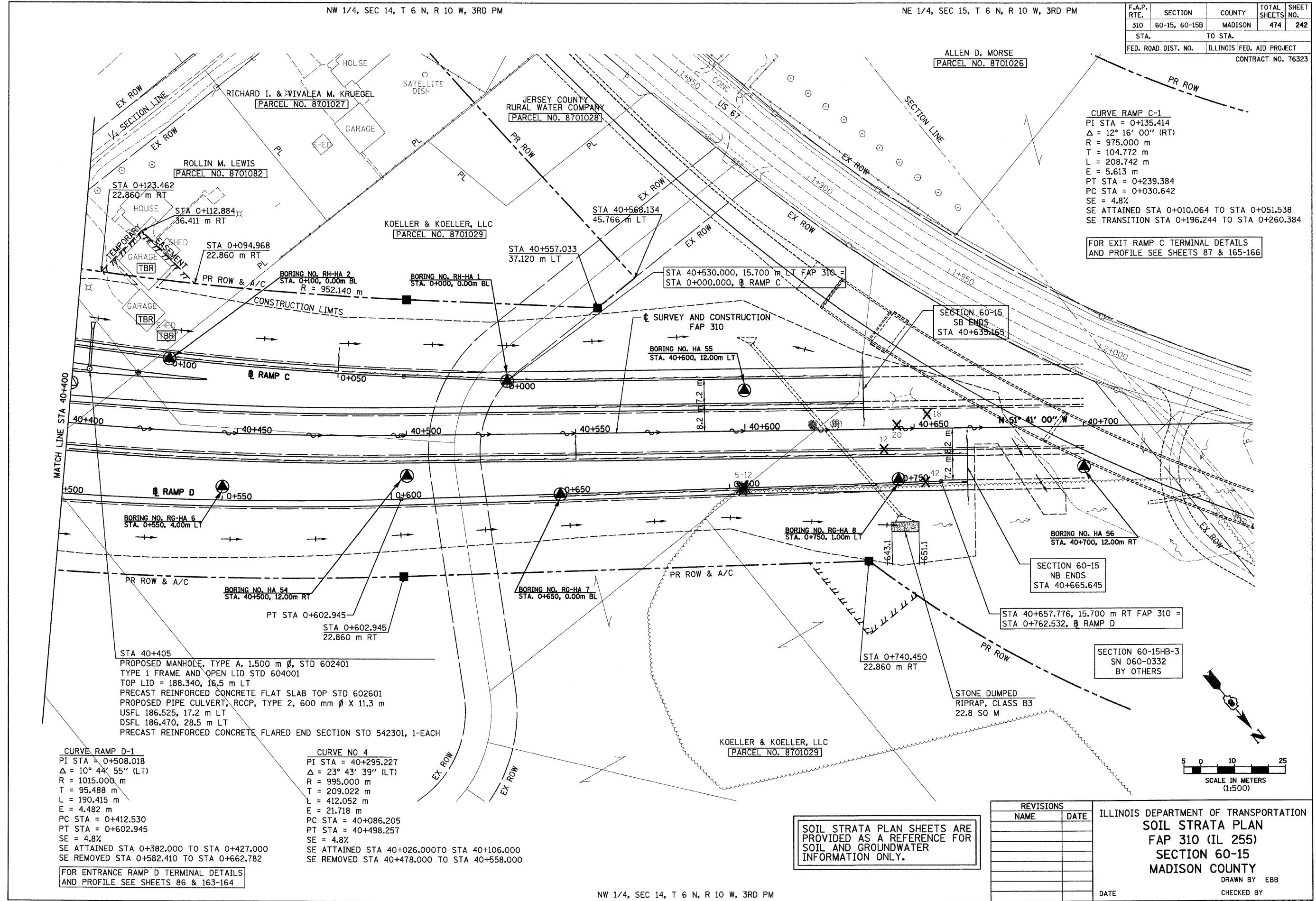


6/28/2007

NW 1/4, SEC 14, T 6 N, R 10 W, 3RD PM

NE 1/4, SEC 15, T 6 N, R 10 W, 3RD PM

F.A.P. RTE.	SECTION	COUNTY	TOTAL SHEETS	SHEET NO.
310	60-15, 60-15B	MADISON	474	242
STA.		TO STA.		
FED. ROAD DIST. NO.		ILLINOIS FED. AID PROJECT		
CONTRACT NO. 76323				



CURVE RAMP C-1
 PI STA = 0+135.414
 Δ = 12° 16' 00" (RT)
 R = 975.000 m
 T = 104.772 m
 L = 208.742 m
 E = 5.613 m
 PT STA = 0+239.384
 PC STA = 0+030.642
 SE = 4.8%
 SE ATTAINED STA 0+010.064 TO STA 0+051.538
 SE TRANSITION STA 0+196.244 TO STA 0+260.384

FOR EXIT RAMP C TERMINAL DETAILS AND PROFILE SEE SHEETS 87 & 165-166

CURVE RAMP D-1
 PI STA = 0+508.018
 Δ = 10° 44' 55" (LT)
 R = 1015.000 m
 T = 95.488 m
 L = 190.415 m
 E = 4.482 m
 PT STA = 0+412.530
 PC STA = 0+602.945
 SE = 4.8%
 SE ATTAINED STA 0+382.000 TO STA 0+427.000
 SE REMOVED STA 0+582.410 TO STA 0+662.782

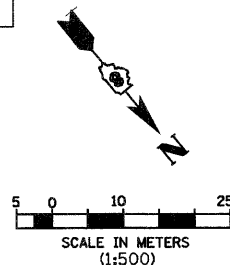
FOR ENTRANCE RAMP D TERMINAL DETAILS AND PROFILE SEE SHEETS 86 & 163-164

CURVE NO 4
 PI STA = 40+295.227
 Δ = 23° 43' 39" (LT)
 R = 995.000 m
 T = 209.022 m
 L = 412.052 m
 E = 21.718 m
 PC STA = 40+086.205
 PT STA = 40+498.257
 SE = 4.8%
 SE ATTAINED STA 40+026.000 TO STA 40+106.000
 SE REMOVED STA 40+478.000 TO STA 40+558.000

SOIL STRATA PLAN SHEETS ARE PROVIDED AS A REFERENCE FOR SOIL AND GROUNDWATER INFORMATION ONLY.

REVISIONS	
NAME	DATE

ILLINOIS DEPARTMENT OF TRANSPORTATION
SOIL STRATA PLAN
FAP 310 (IL 255)
SECTION 60-15
MADISON COUNTY
 DRAWN BY EBB
 CHECKED BY
 DATE
 IL 255 (FAP 310), STA 40+400 TO STA 40+665.645



p:\00files\20024\dmainline\soilstrata\plan015a16.dgn

NW 1/4, SEC 14, T 6 N, R 10 W, 3RD PM