

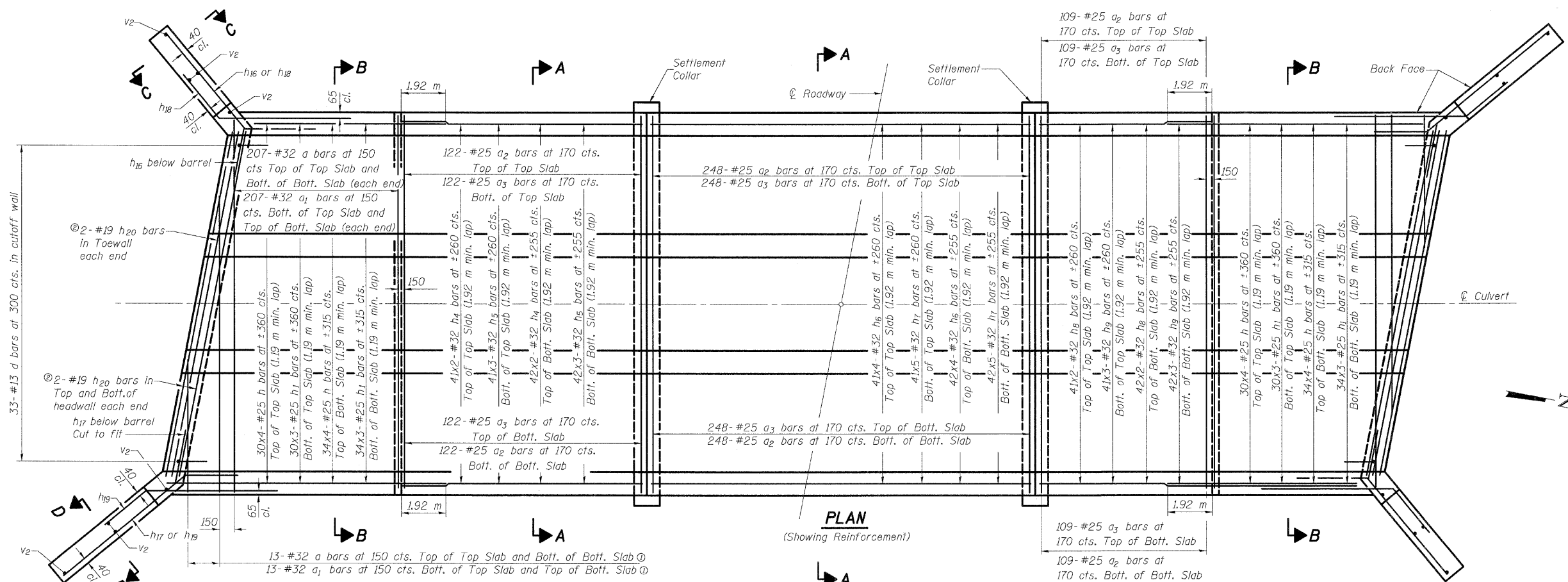
STATE OF ILLINOIS  
DEPARTMENT OF TRANSPORTATION

ROUTE NO.	SECTION	COUNTY	TOTAL SHEETS	SHEET NO.
F.A.P. 310	60-15B	MADISON	474	246
FED. ROAD DIST. NO. 7	ILLINOIS	FED. AID PROJECT		

Contract No. 76323

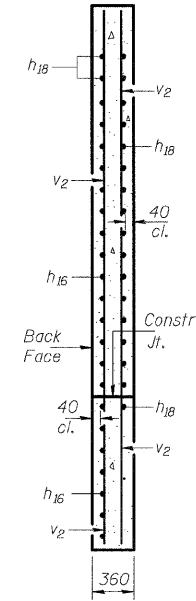
6/28/2007 2:53:13 PM

pt:\00f\1es\00224\dms\MLINE\SN0620243-Plans\SN0620243.dgn

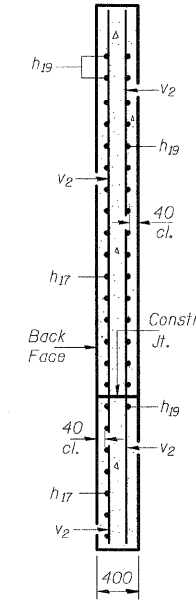


**PLAN**  
(Showing Reinforcement)

- ① Cut a and a<sub>1</sub> bars to fit skew. Use balance of bar in opposite end.
- ② See longitudinal section on sheet #4 of 9 for placement of h<sub>20</sub> bars.



**SECTION C-C**  
(Short Wingwall)



**SECTION D-D**  
(Long Wingwall)

Notes: Bars indicated thus 12 x 4 - #15 etc. indicates 12 lines of bars with 4 lengths per line.  
See sheet #5 of 9 for Sections A-A & B-B.

DESIGNED	ADL
CHECKED	WLW
DRAWN	KAH
CHECKED	WLW

**PLAN AND WINGWALL SECTIONS**  
FAP RTE 310 (IL RTE 255)  
OVER ROCK CREEK  
SECTION 60-15B  
MADISON COUNTY  
STATION 35+291.000  
S.N. 060-2043