

STATE OF ILLINOIS  
DEPARTMENT OF TRANSPORTATION

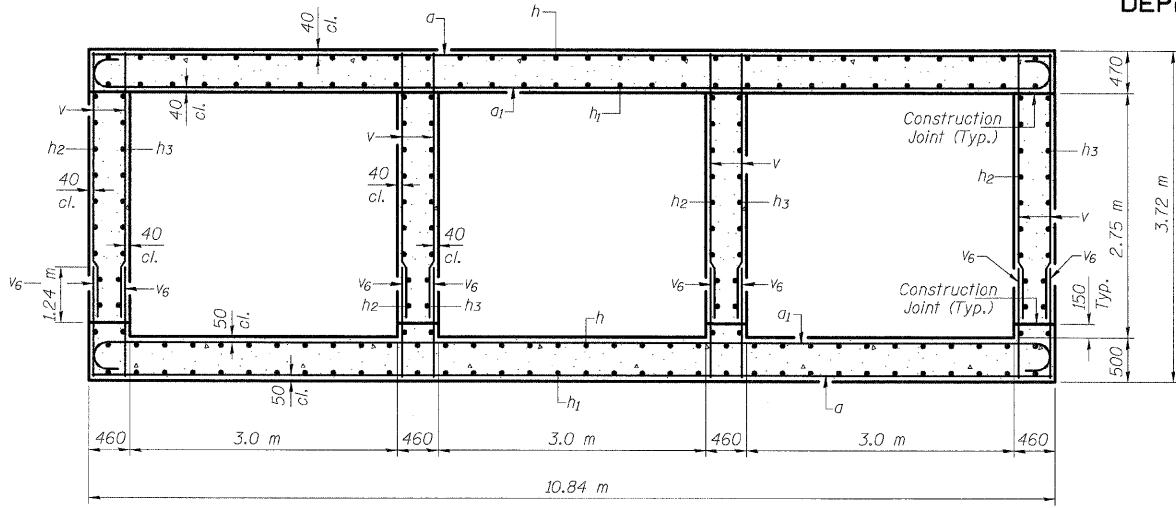
ROUTE NO.	SECTION	COUNTY	TOTAL SHEETS	SHEET NO.
F.A.P. 310	60-15B	MADISON	474	248
FED. ROAD DIST. NO. 7	DIVISION	FED. AID PROJECT		

SHEET NO. 5  
9 SHEETS

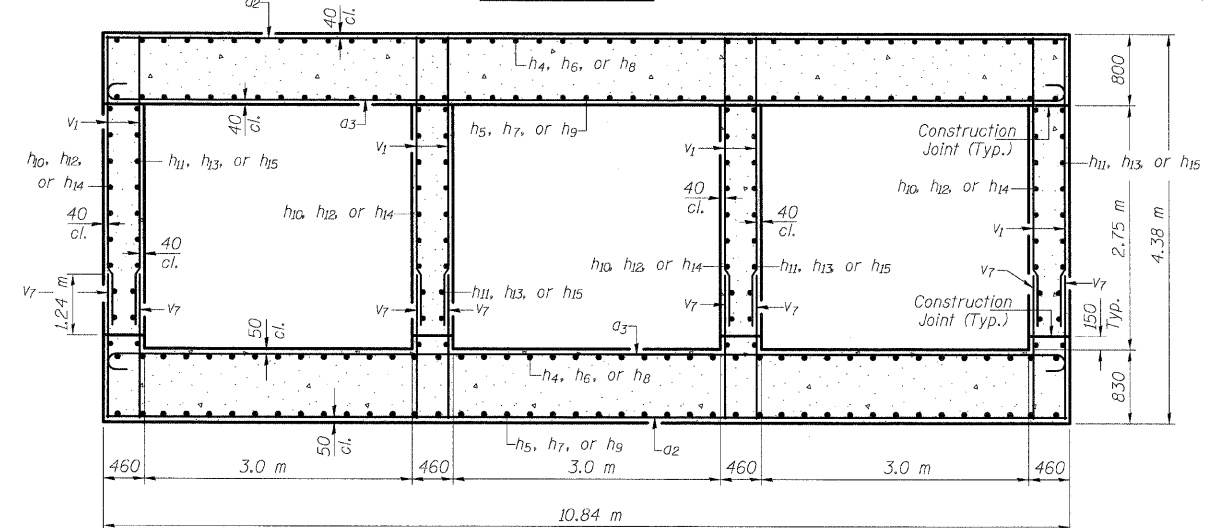
Contract No. 76323

6/28/2007 2:53:13 PM

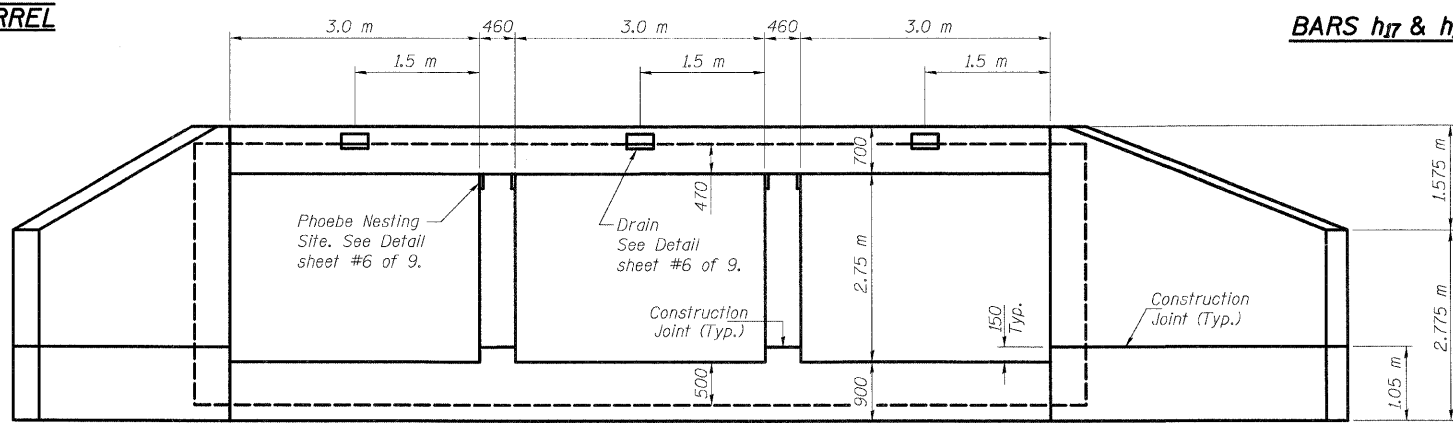
p:\001\es\20024\MAINLINE\SN0602043-Plans\SN0602043.dgn



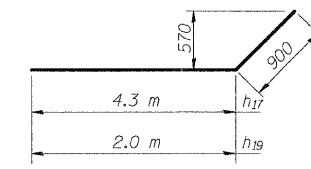
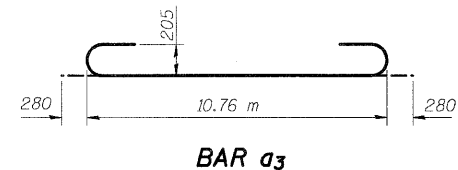
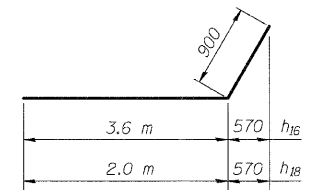
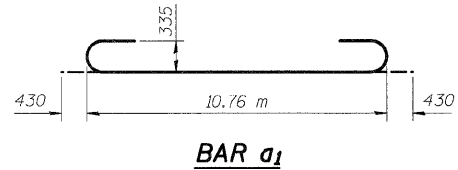
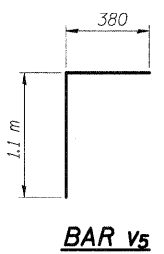
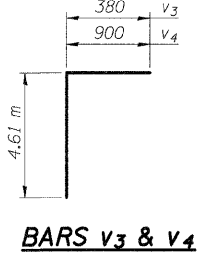
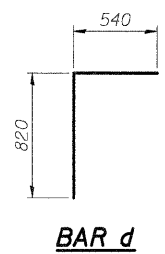
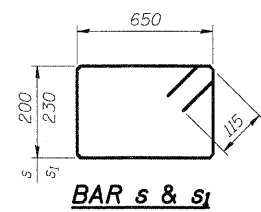
SECTION B-B  
THRU BARREL



SECTION A-A  
THRU BARREL



END ELEVATION



BILL OF MATERIAL

Bar	No.	Size	Length (m)	Shape
a	854	#32	10.76	—
a1	854	#32	11.62	U
a2	958	#25	10.76	—
a3	958	#25	11.32	U
a4	18	#25	11.37	—
a5	10	#25	13.57	—
d	66	#13	1.36	—
h	512	#25	9.61	—
h1	384	#25	12.42	—
h2	240	#22	12.00	—
h3	320	#22	9.23	—
h4	166	#32	11.19	—
h5	249	#32	8.10	—
h6	332	#32	11.92	—
h7	415	#32	9.92	—
h8	166	#32	10.19	—
h9	249	#32	7.44	—
h10	80	#25	10.83	—
h11	120	#25	7.61	—
h12	160	#25	11.37	—
h13	200	#25	9.34	—
h14	80	#25	9.83	—
h15	120	#25	6.95	—
h16	34	#32	4.50	—
h17	34	#32	5.20	—
h18	46	#32	2.90	—
h19	46	#32	2.90	—
h20	12	#19	10.45	—
s	140	#13	1.93	—
s1	76	#13	1.99	—
v	2152	#25	2.99	—
v1	4056	#25	3.32	—
v2	16	#13	4.27	—
v3	20	#25	4.99	—
v4	20	#25	5.51	—
v5	20	#25	1.48	—
v6	2152	#25	1.89	—
v7	4056	#25	2.17	—
Concrete Box Culverts		m <sup>3</sup>	2878.2	
Reinforcement Bars		kg	527,220	

DESIGNED	ADL
CHECKED	WLW
DRAWN	KAH
CHECKED	WLW

DETAILS  
FAP RTE 310 (IL RTE 255)  
OVER ROCK CREEK  
SECTION 60-15B  
MADISON COUNTY  
STATION 35+291.000  
S.N. 060-2043