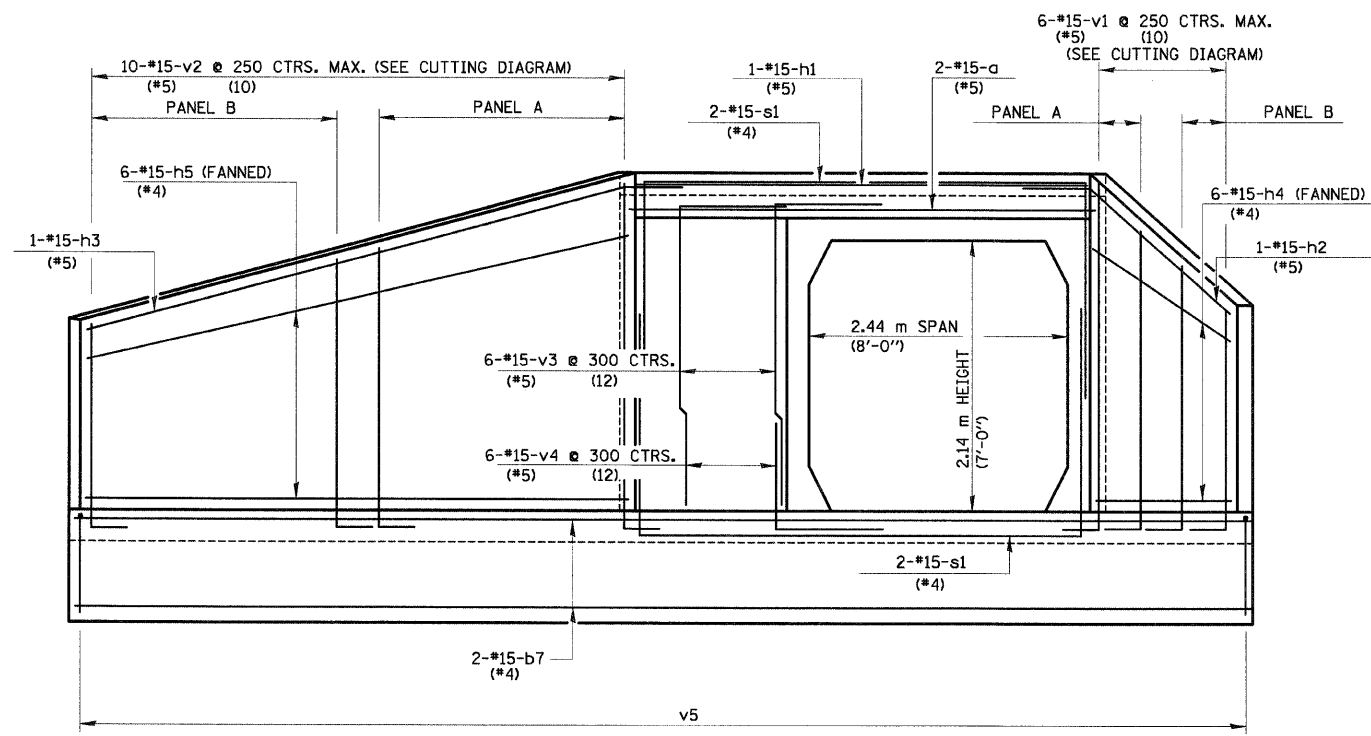
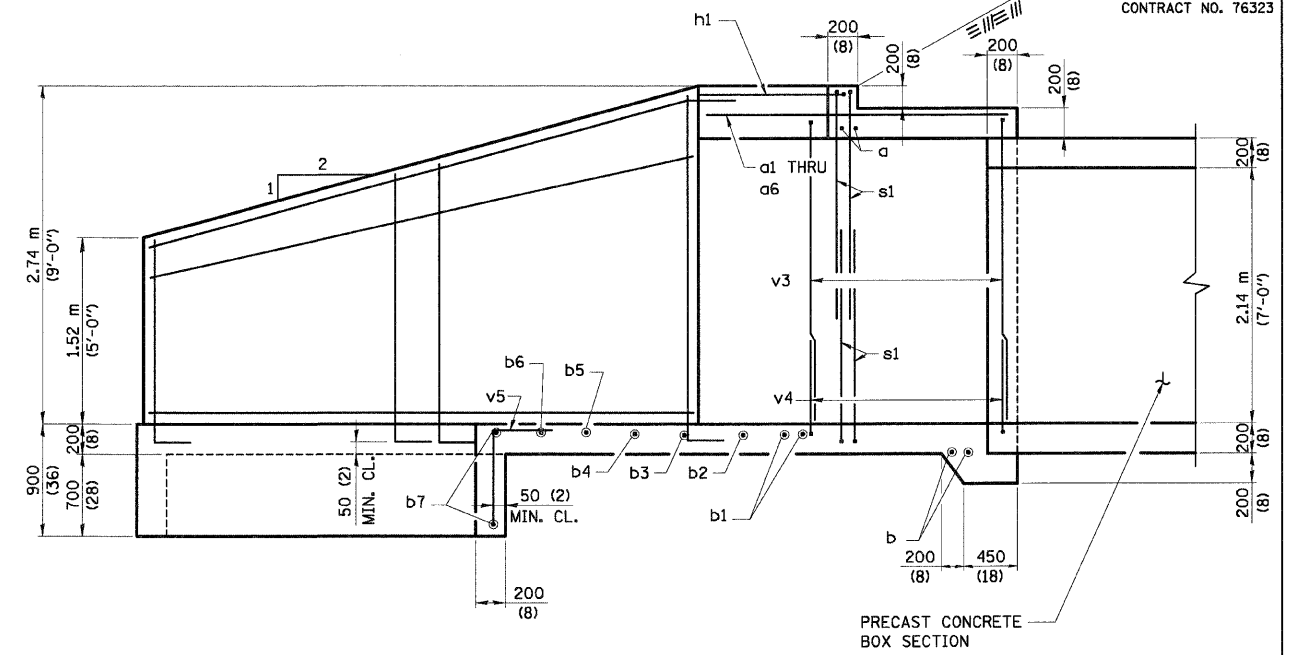


F.A.P. RTE.	SECTION	COUNTY	TOTAL SHEETS	SHEET NO.
310	60-15, 60-15B	MADISON	474	259
STA. TO STA.		ILLINOIS FED. AID PROJECT		
FED. ROAD DIST. NO.		CONTRACT NO. 76323		



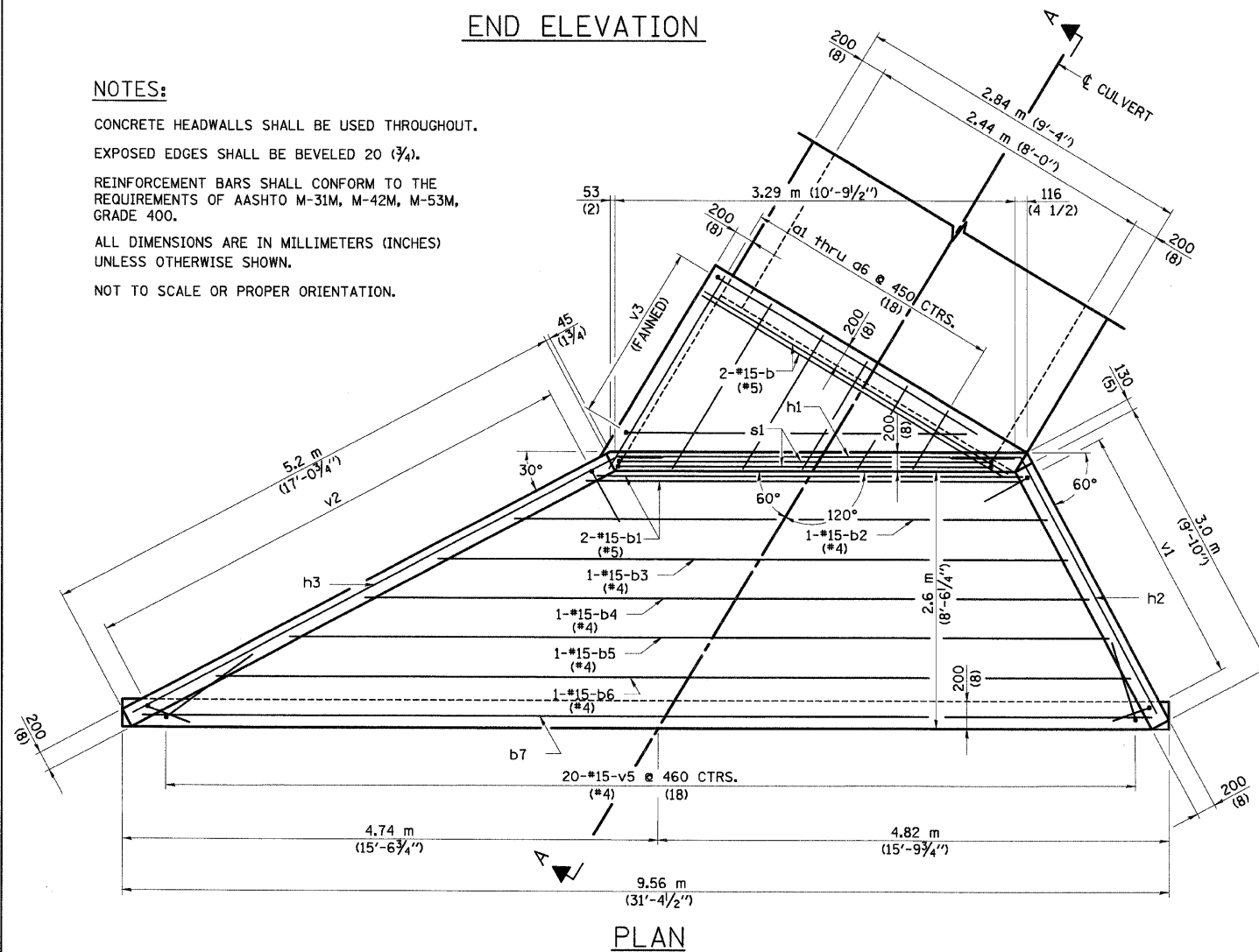
END ELEVATION



SECTION A-A

NOTES:

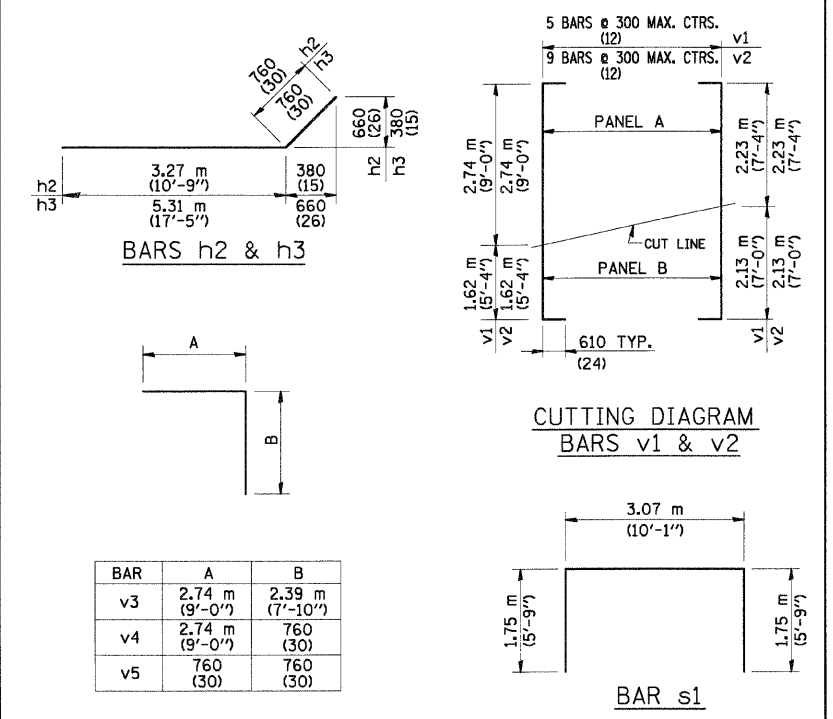
- CONCRETE HEADWALLS SHALL BE USED THROUGHOUT.
- EXPOSED EDGES SHALL BE BEVELED 20 (3/4).
- REINFORCEMENT BARS SHALL CONFORM TO THE REQUIREMENTS OF AASHTO M-31M, M-42M, M-53M, GRADE 400.
- ALL DIMENSIONS ARE IN MILLIMETERS (INCHES) UNLESS OTHERWISE SHOWN.
- NOT TO SCALE OR PROPER ORIENTATION.



PLAN

BILL OF MATERIAL

BAR SIZE	NO.	LENGTH	SHAPE
a	No.15 (No.5) 2	3.58 m (11'-9")	▬
a1	(No.4) 1	1.85 m (6'-1")	▬
a2	(No.4) 1	1.60 m (5'-3")	▬
a3	(No.4) 1	1.32 m (4'-4")	▬
a4	(No.4) 1	1.07 m (3'-6")	▬
a5	(No.4) 1	810 (32)	▬
a6	(No.4) 1	530 (21)	▬
b	(No.5) 2	2.94 m (9'-8")	▬
b1	(No.5) 2	3.83 m (12'-7")	▬
b2	(No.4) 1	4.65 m (15'-3")	▬
b3	(No.4) 1	5.72 m (18'-9")	▬
b4	(No.4) 1	6.76 m (22'-2")	▬
b5	(No.4) 1	7.82 m (25'-8")	▬
b6	(No.4) 1	8.86 m (29'-1")	▬
b7	(No.4) 2	9.49 m (31'-1")	▬
h1	(No.5) 1	3.4 m (11'-2")	▬
h2	(No.5) 1	4.03 m (13'-3")	▬
h3	(No.5) 1	6.07 m (19'-11")	▬
h4	(No.4) 6	2.92 m (9'-7")	▬
h5	(No.4) 6	5.13 m (16'-10")	▬
v1	(No.5) 6	5.58 m (18'-4")	▬
v2	(No.5) 10	5.58 m (18'-4")	▬
v3	(No.5) 6	5.13 m (16'-10")	▬
v4	(No.5) 6	3.5 m (11'-6")	▬
v5	(No.4) 20	1.52 m (5'-0")	▬
s1	No.15 (No.4) 4	6.57 m (21'-7")	▬
CONCRETE HEADWALLS		m <sup>3</sup> (C.Y.)	10.7 (14.0)
REINFORCEMENT BARS		kg (Lbs.)	530 (990)



CUTTING DIAGRAM BARS v1 & v2

BAR	A	B
v3	2.74 m (9'-0")	2.39 m (7'-10")
v4	2.74 m (9'-0")	760 (30)
v5	760 (30)	760 (30)

NOTES:

- TABLE FOR ONE (1) HEADWALL ONLY. TWO (2) HEADWALLS REQUIRED.
- BAR DIMENSIONS ARE OUT TO OUT.

REVISIONS	
NAME	DATE

ILLINOIS DEPARTMENT OF TRANSPORTATION  
**CAST-IN-PLACE HEADWALLS**  
**STATION 37+397 RT & LT**  
**2440 mm x 2140 mm (8'x7') BOX**  
**@ 30° SKEW**  
 DRAWN BY PTW  
 CHECKED BY ADL  
 DATE