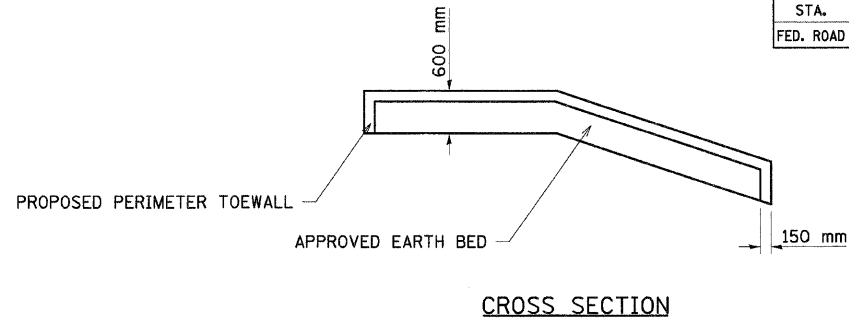
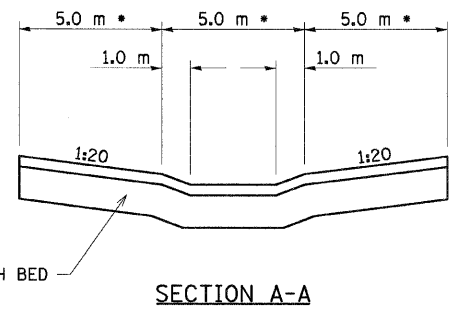
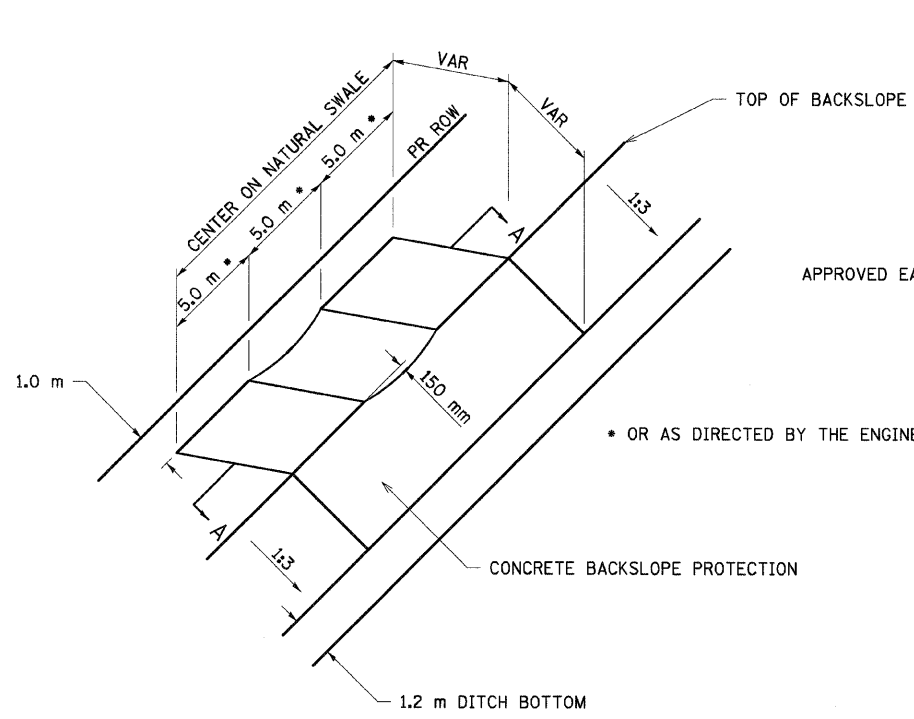


F.A.P. RTE.	SECTION	COUNTY	TOTAL SHEETS	SHEET NO.
310	60-15, 60-15B	MADISON	474	263
STA.		TO STA.		
FED. ROAD DIST. NO.		ILLINOIS FED. AID PROJECT		
CONTRACT NO. 76323				



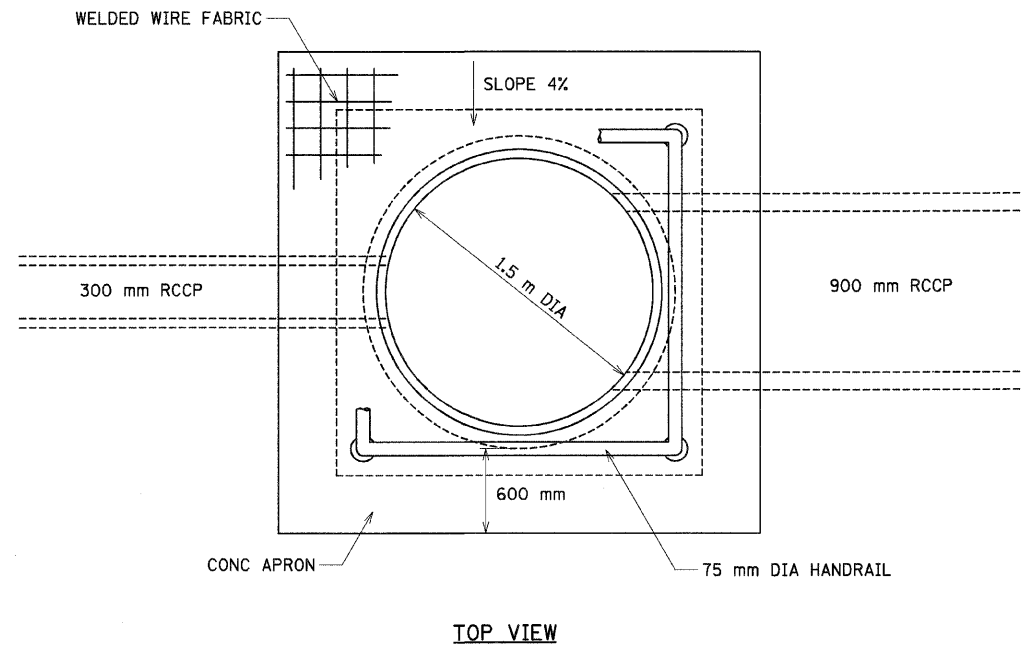
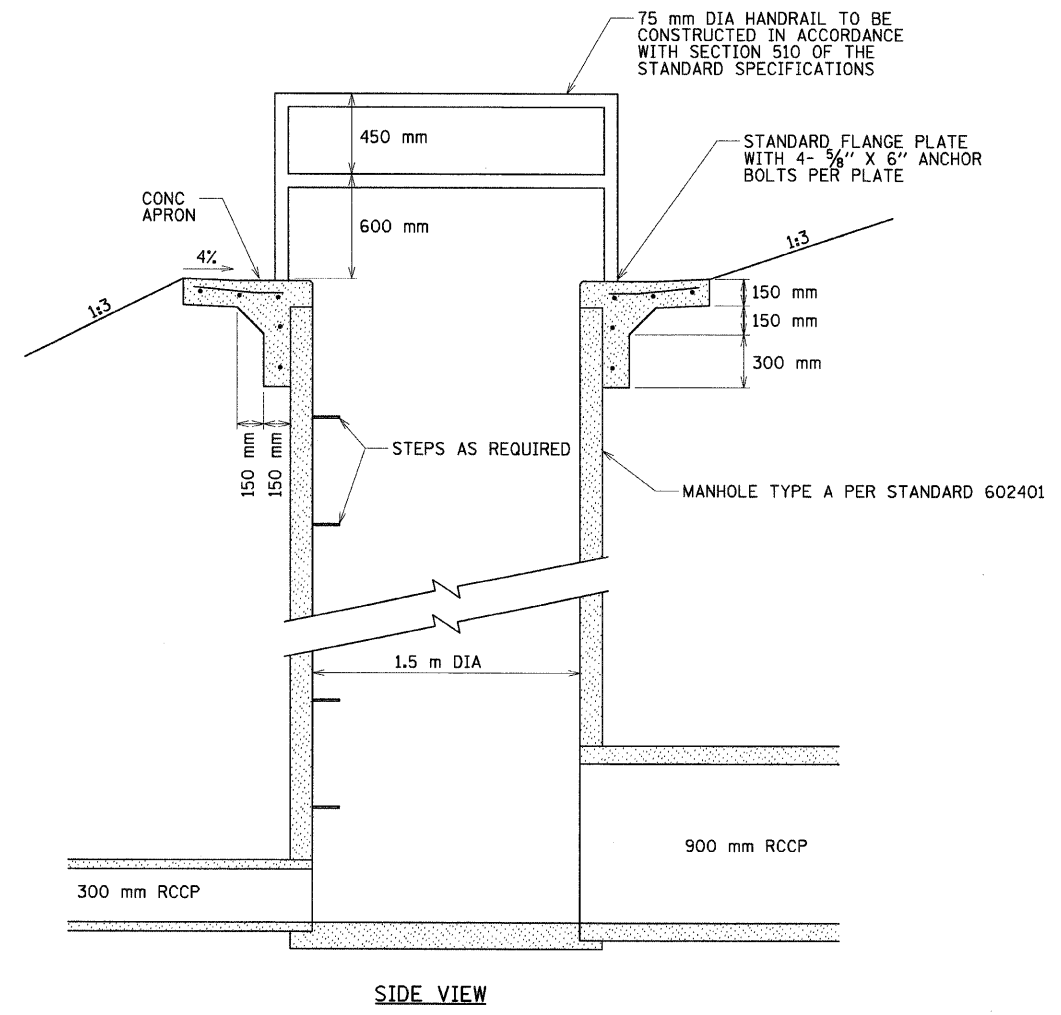
GENERAL NOTES:

1. CLASS SI CONCRETE SHALL BE USED THROUGHOUT.
2. REINFORCED FABRIC FOR SLOPE WALL SHALL BE 150 mm X 150 mm MESH AND SHALL EXTEND INTO THE TOEWALLS.
3. LOCATIONS AND DIMENSIONS MAY BE ADJUSTED TO FIT FIELD CONDITIONS.

LOCATIONS

STATION	SIDE	LOCATION
0+265.0	RT	RAMP B
0+120.0	RT	RAMP E
0+295.5	RT	RAMP E

TYPICAL DETAIL FOR BACK SLOPE PROTECTION 150 mm SLOPE WALL



MANHOLE SPECIAL DETAIL - STA 36+975

REVISIONS	
NAME	DATE

ILLINOIS DEPARTMENT OF TRANSPORTATION
 MISCELLANEOUS DETAILS
 FAP 310 (IL 255)
 SECTION 60-15
 MADISON COUNTY
 DRAWN BY EBB
 CHECKED BY
 DATE