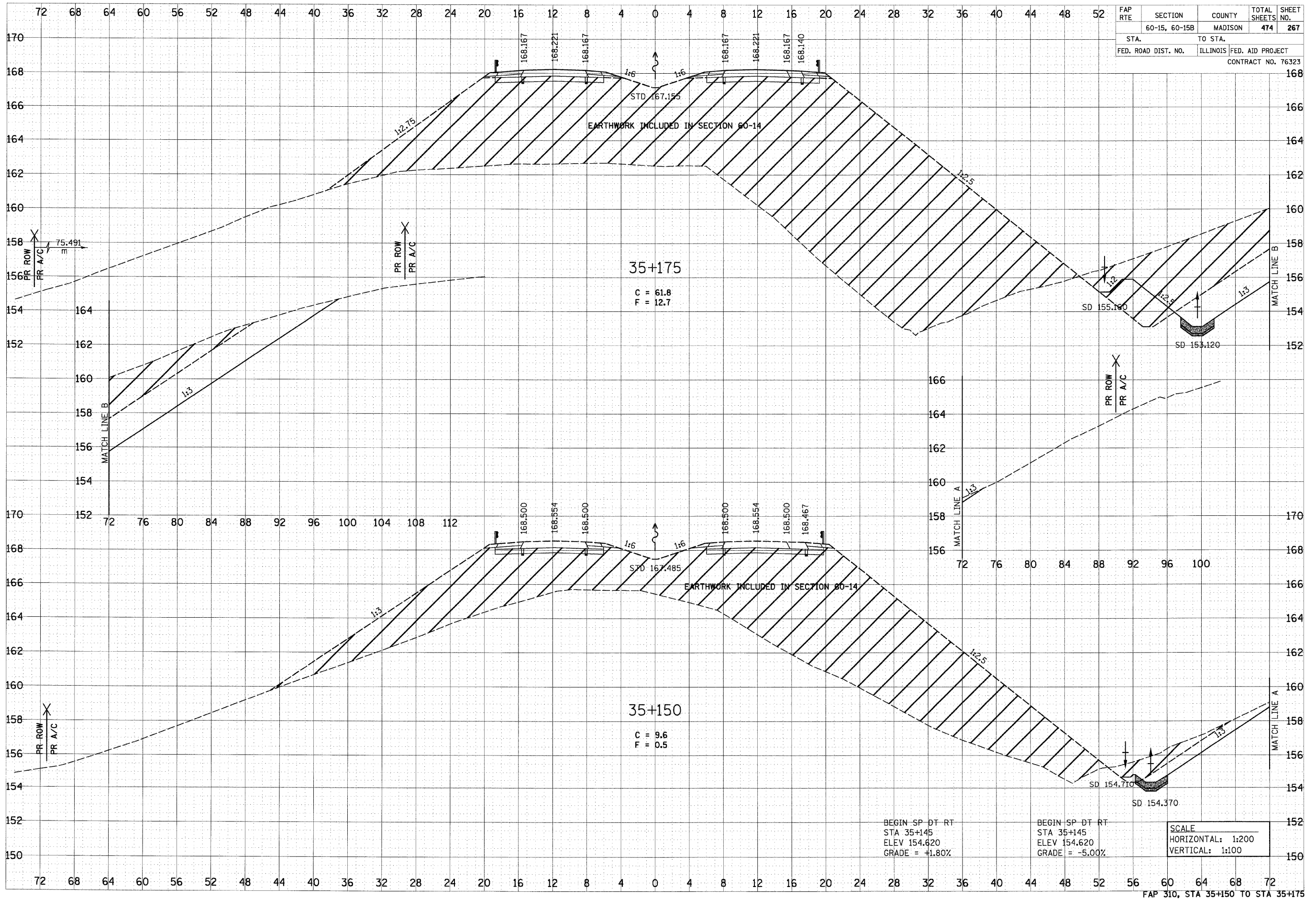


6/29/2007

FAP RTE	SECTION	COUNTY	TOTAL SHEETS	SHEET NO.
	60-15, 60-15B	MADISON	474	267
STA. 60-15, 60-15B		TO STA. MADISON		
FED. ROAD DIST. NO.		ILLINOIS	FED. AID PROJECT	
CONTRACT NO. 76323				

FINAL SURVEY	DATE
BY	
NO. CHECKED	
AREAS	
NOTE BOOK	
NO.	

ORIGINAL SURVEY	DATE
BY	
NO. CHECKED	
AREAS	
NOTE BOOK	
NO.	



35+175
 C = 61.8
 F = 12.7

35+150
 C = 9.6
 F = 0.5

BEGIN SP DT RT
 STA 35+145
 ELEV 154.620
 GRADE = +1.80%

BEGIN SP DT RT
 STA 35+145
 ELEV 154.620
 GRADE = -5.00%

SCALE
 HORIZONTAL: 1:200
 VERTICAL: 1:100

p:\00711es\00224\dmr\m1.mec\crosssections\wesc015a.dgn