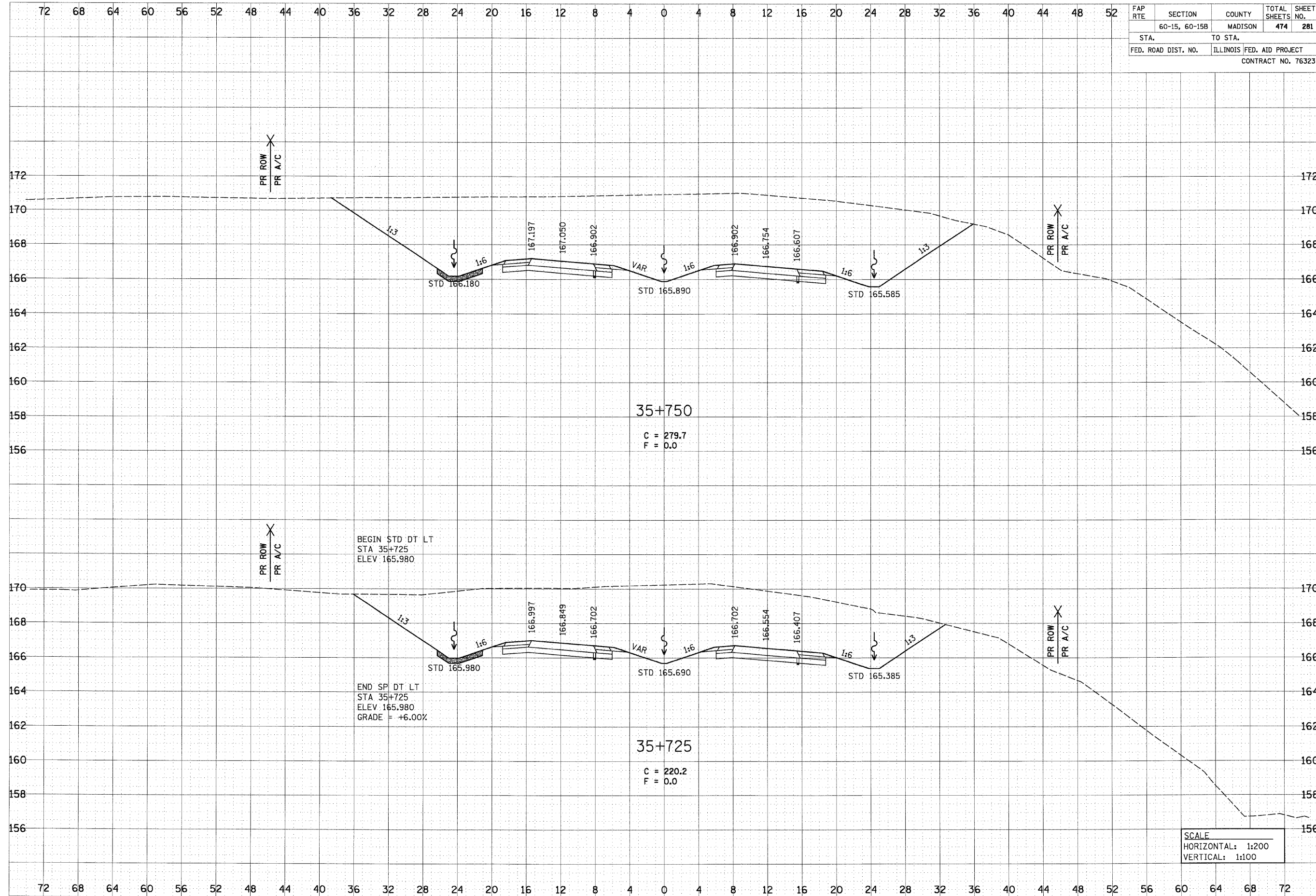


6/29/2007

DATE	
BY	
FINAL SURVEY	
NOTE BOOK	
AREAS CHECKED	
NO.	

DATE	
BY	
ORIGINAL SURVEY	
NOTE BOOK	
AREAS CHECKED	
NO.	

FAP RTE	SECTION	COUNTY	TOTAL SHEETS	SHEET NO.
	60-15, 60-15B	MADISON	474	281
STA.	TO STA.			
FED. ROAD DIST. NO.	ILLINOIS FED. AID PROJECT			
CONTRACT NO. 76323				



35+750  
 C = 279.7  
 F = 0.0

BEGIN STD DT LT  
 STA 35+725  
 ELEV 165.980

END SP DT LT  
 STA 35+725  
 ELEV 165.980  
 GRADE = +6.00%

35+725  
 C = 220.2  
 F = 0.0

SCALE  
 HORIZONTAL: 1:200  
 VERTICAL: 1:100