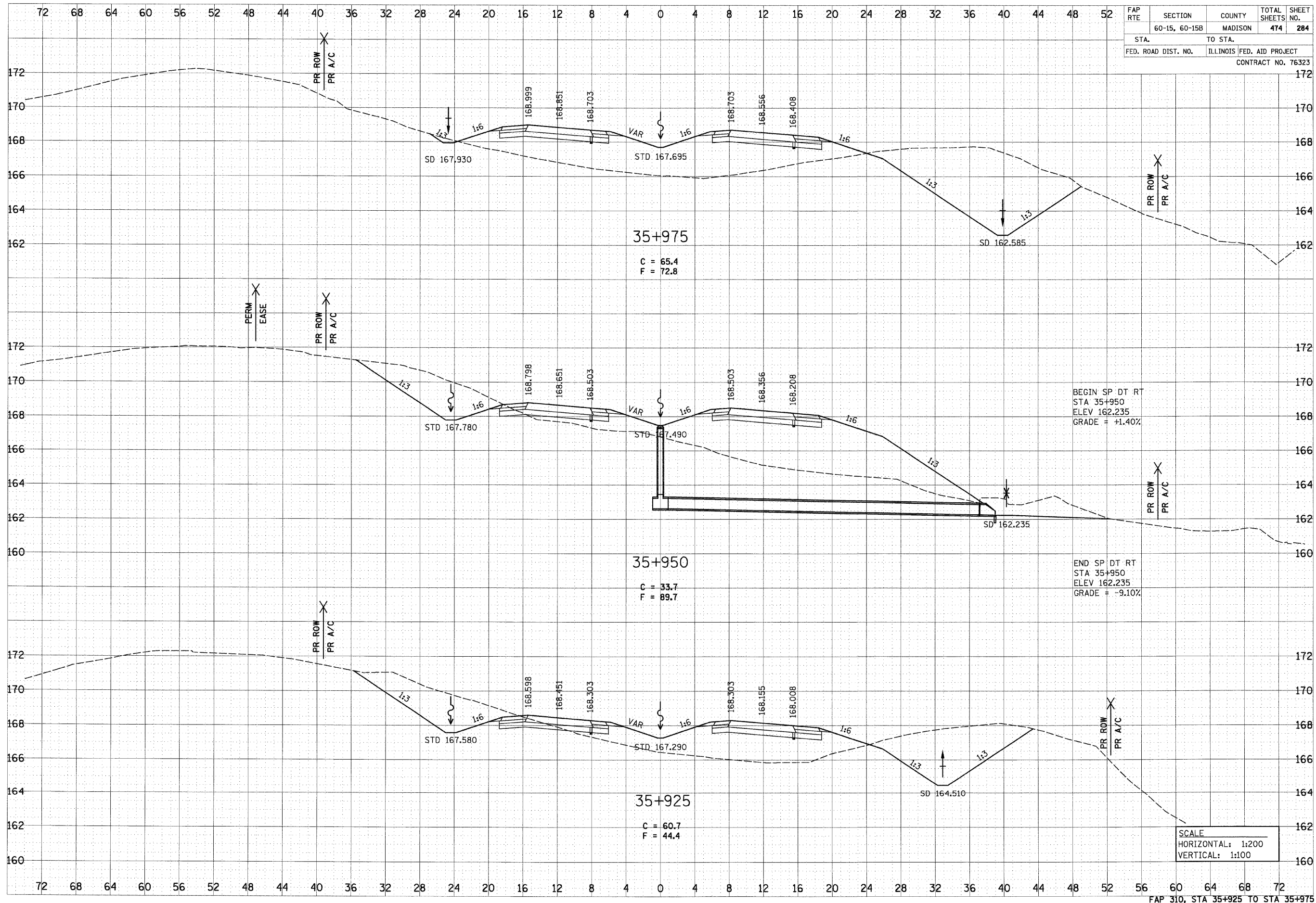


6/29/2007

DATE	BY
SURVEYED	
NOTE BOOK	
AREAS	
AREAS CHECKED	
NO.	

DATE	BY
SURVEYED	
NOTE BOOK	
AREAS	
AREAS CHECKED	
NO.	

p:\0811es\08024\main\line\crosssections\asc015a.dgn



FAP RTE	SECTION	COUNTY	TOTAL SHEETS	SHEET NO.
	60-15, 60-15B	MADISON	474	284
STA.	TO STA.			
FED. ROAD DIST. NO.	ILLINOIS	FED. AID PROJECT		
CONTRACT NO. 76323				

SCALE
 HORIZONTAL: 1:200
 VERTICAL: 1:100