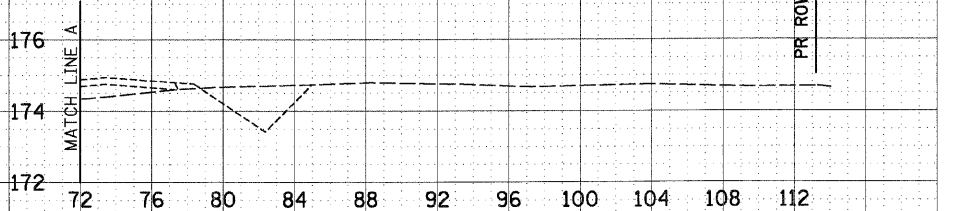
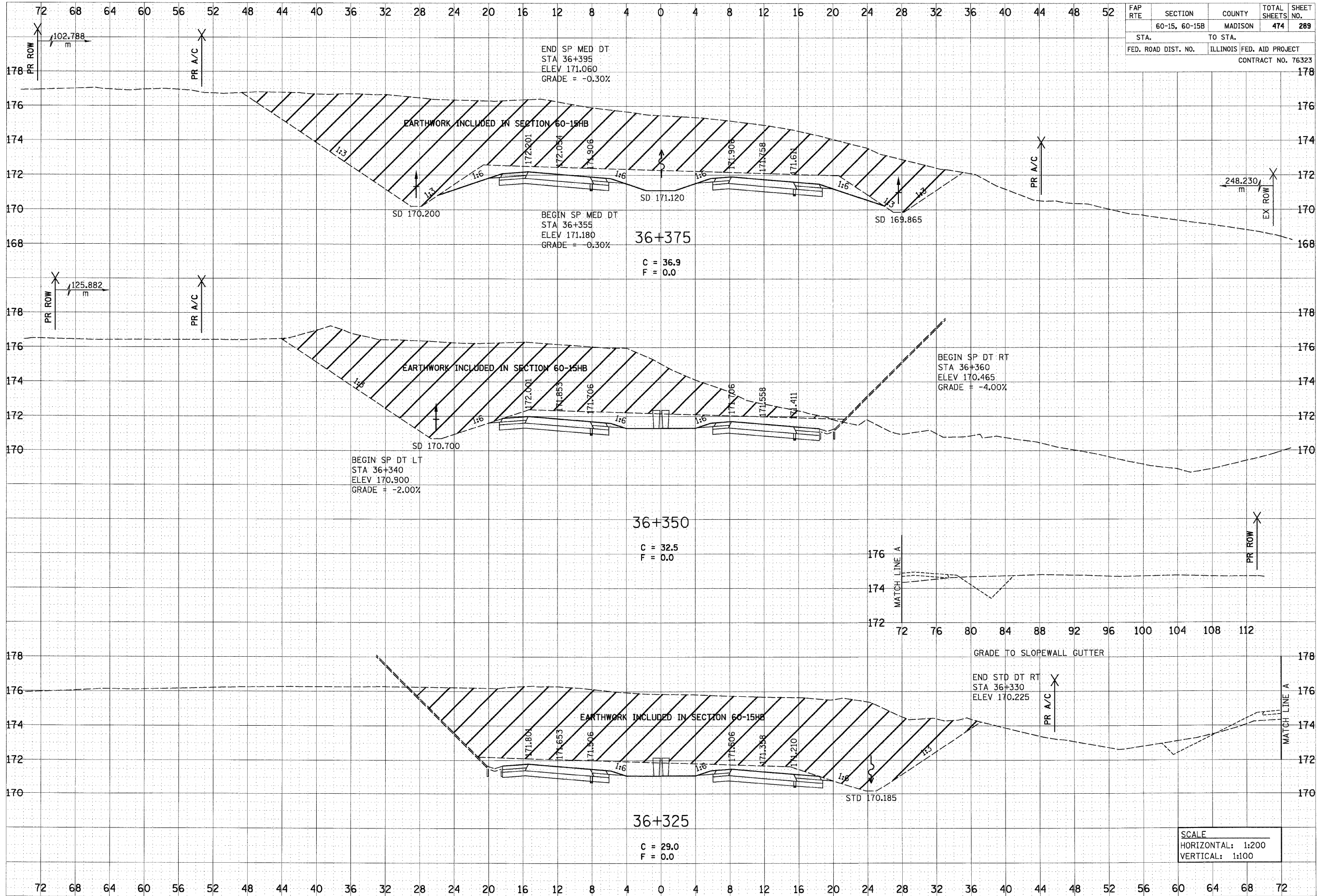


6/29/2007

DATE	
BY	
FINAL SURVEY	
NOTE BOOK	
AREAS CHECKED	
NO.	

DATE	
BY	
ORIGINAL SURVEY	
NOTE BOOK	
AREAS CHECKED	
NO.	

FAP RTE	SECTION	COUNTY	TOTAL SHEETS	SHEET NO.
	60-15, 60-15B	MADISON	474	289
STA.	TO STA.			
FED. ROAD DIST. NO.	ILLINOIS FED. AID PROJECT			
				CONTRACT NO. 76323



SCALE
 HORIZONTAL: 1:200
 VERTICAL: 1:100

p:\0871ies\08024\dmn\1\nc\crosssections\csec015b.dgn