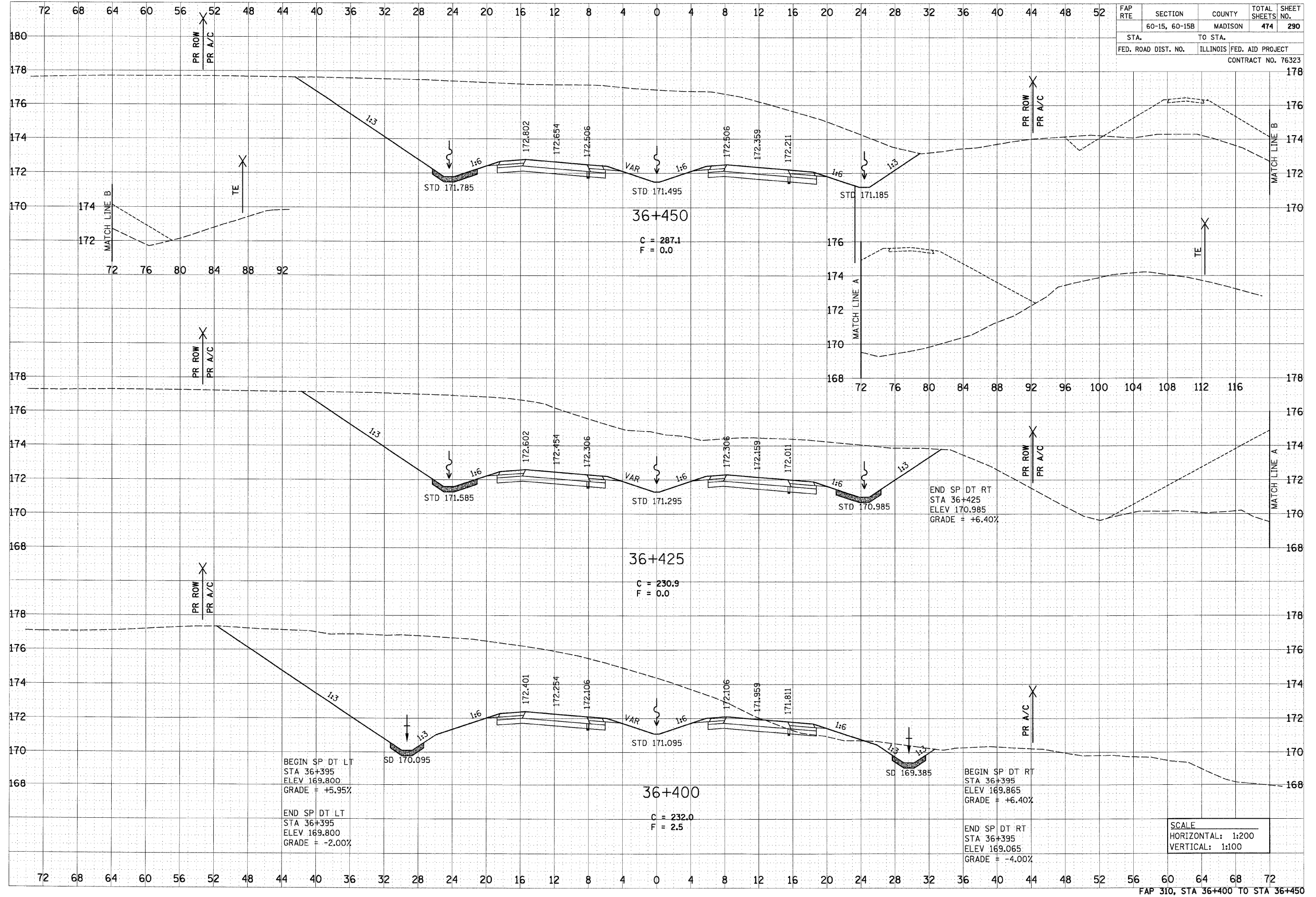


6/29/2007

DATE	
BY	
FINAL SURVEY	
NOTE BOOK	
AREAS	
AREAS CHECKED	
NO.	

DATE	
BY	
ORIGINAL SURVEY	
NOTE BOOK	
AREAS	
AREAS CHECKED	
NO.	

FAP RTE	SECTION	COUNTY	TOTAL SHEETS	SHEET NO.
	60-15, 60-15B	MADISON	474	290
STA.	TO STA.			
FED. ROAD DIST. NO.	ILLINOIS	FED. AID PROJECT		
CONTRACT NO. 76323				



SCALE  
 HORIZONTAL: 1:200  
 VERTICAL: 1:100

p:\001\1es\00224\chman\1es\crosssections\wsec015a.dgn