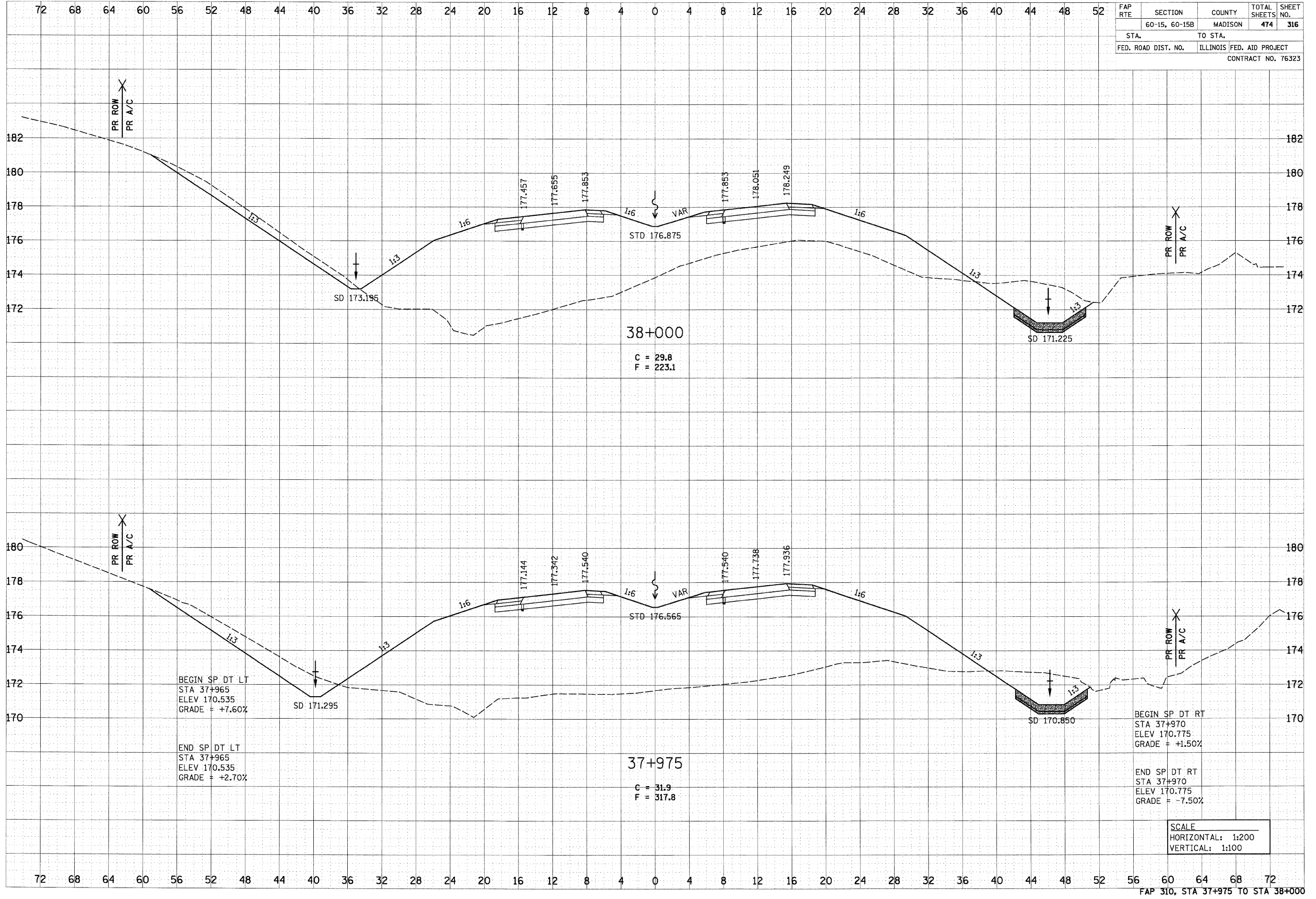


6/29/2007

DATE	
BY	
FINAL SURVEY	
NOTE BOOK	
AREAS CHECKED	
NO.	

DATE	
BY	
ORIGINAL SURVEY	
NOTE BOOK	
AREAS CHECKED	
NO.	

FAP RTE	SECTION	COUNTY	TOTAL SHEETS	SHEET NO.
	60-15, 60-15B	MADISON	474	316
STA.	TO STA.			
FED. ROAD DIST. NO.	ILLINOIS FED. AID PROJECT			
CONTRACT NO. 76323				



38+000  
 C = 29.8  
 F = 223.1

37+975  
 C = 31.9  
 F = 317.8

BEGIN SP DT LT  
 STA 37+965  
 ELEV 170.535  
 GRADE = +7.60%

END SP DT LT  
 STA 37+965  
 ELEV 170.535  
 GRADE = +2.70%

BEGIN SP DT RT  
 STA 37+970  
 ELEV 170.775  
 GRADE = +1.50%

END SP DT RT  
 STA 37+970  
 ELEV 170.775  
 GRADE = -7.50%

SCALE  
 HORIZONTAL: 1:200  
 VERTICAL: 1:100