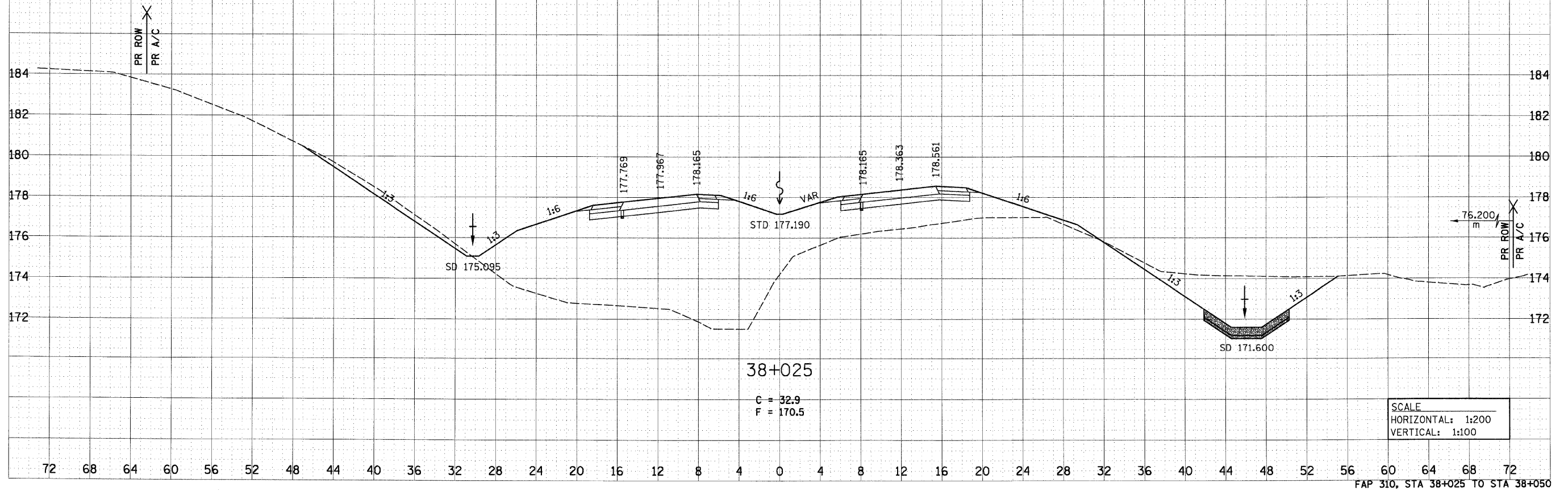
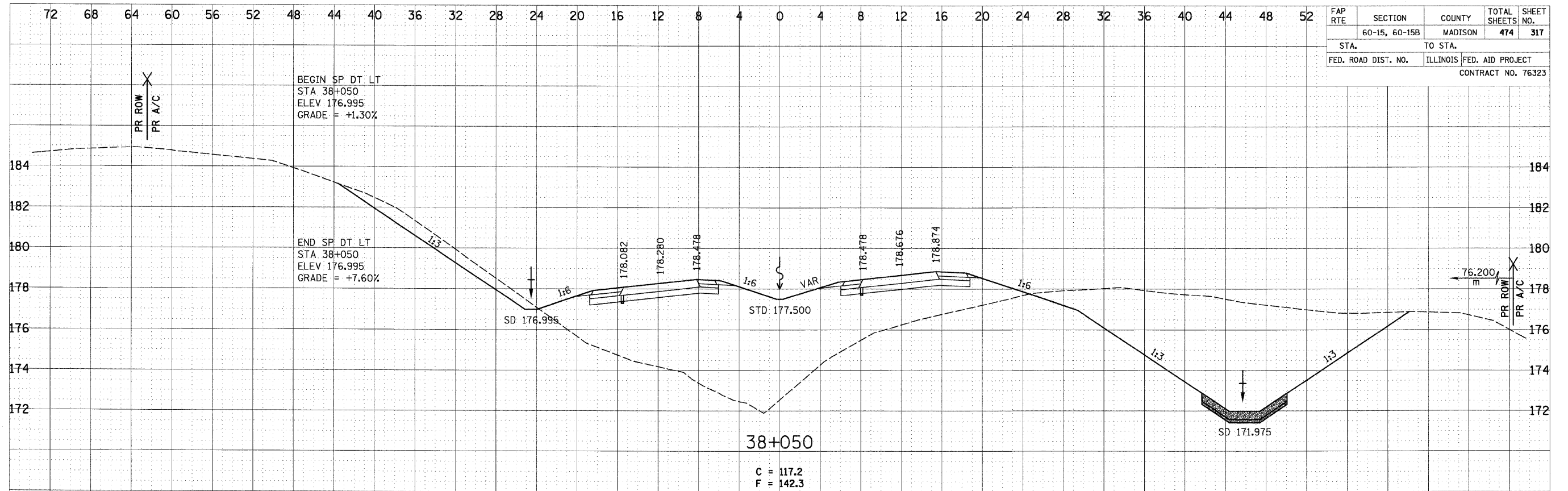


5/29/2007

DATE	
BY	
SURVEYED	
NOTE BOOK	
TEMPLATE	
AREAS	
CHECKED	
NO.	

DATE	
BY	
ORIGINAL	
NOTE BOOK	
TEMPLATE	
AREAS	
CHECKED	
NO.	

FAP RTE	SECTION	COUNTY	TOTAL SHEETS	SHEET NO.
	60-15, 60-15B	MADISON	474	317
STA.	TO STA.			
FED. ROAD DIST. NO.	ILLINOIS	FED. AID PROJECT	CONTRACT NO. 76323	



SCALE  
HORIZONTAL: 1:200  
VERTICAL: 1:100

p:\0871.es\08024\dmn\line\crosssections\wsec015a.dgn