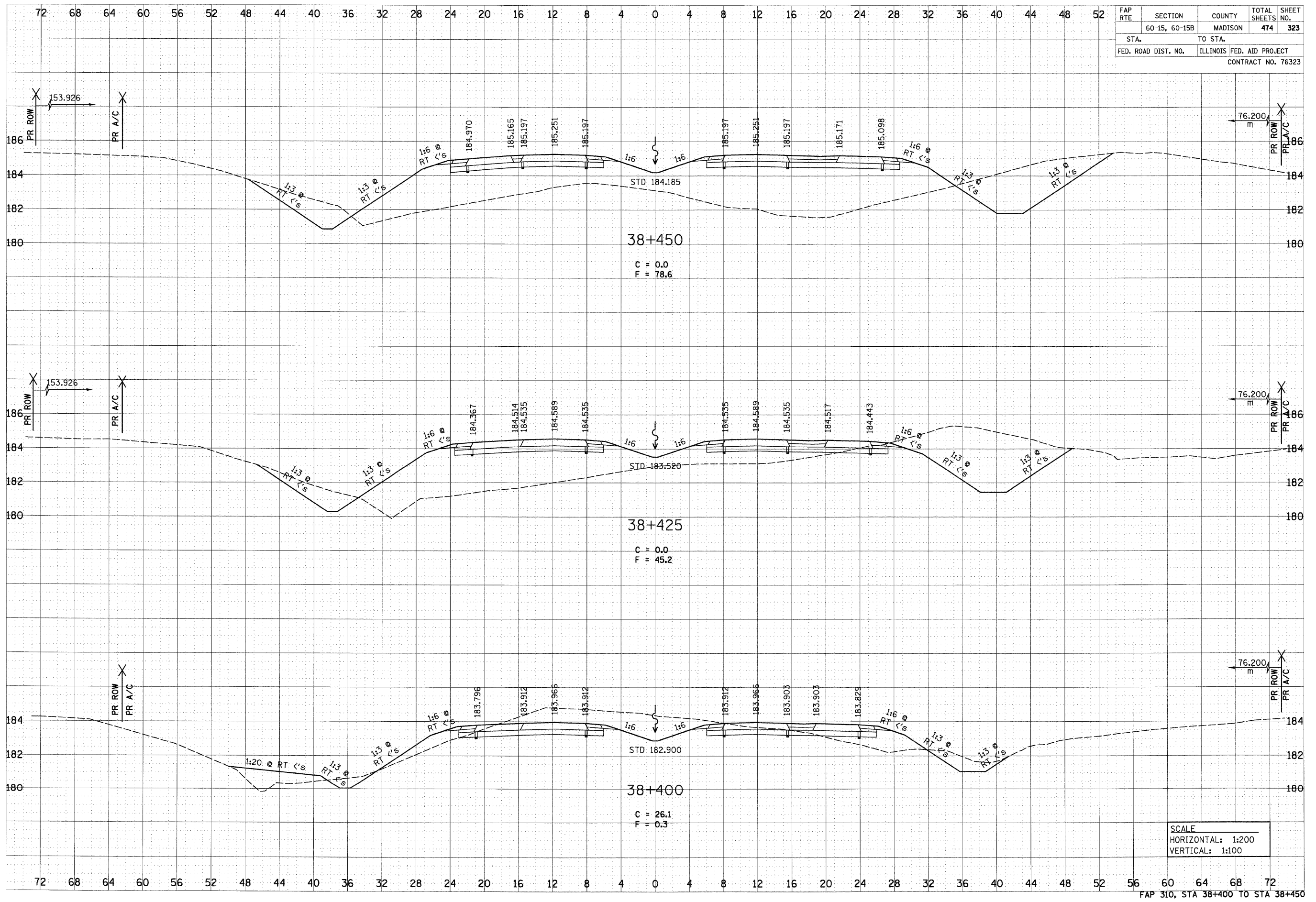


6/29/2007

DATE	
BY	
SURVEYED	
REVISIONS	
NOTED	
AREAS	
CHECKED	
NO.	

DATE	
BY	
SURVEYED	
REVISIONS	
NOTED	
AREAS	
CHECKED	
NO.	

FAP RTE	SECTION	COUNTY	TOTAL SHEETS	SHEET NO.
	60-15, 60-15B	MADISON	474	323
STA.	TO STA.			
FED. ROAD DIST. NO.	ILLINOIS FED. AID PROJECT			
CONTRACT NO. 76323				



SCALE
 HORIZONTAL: 1:200
 VERTICAL: 1:100

p:\2007\1es\08024\adme\luna\crosssections\wsec015.dgn