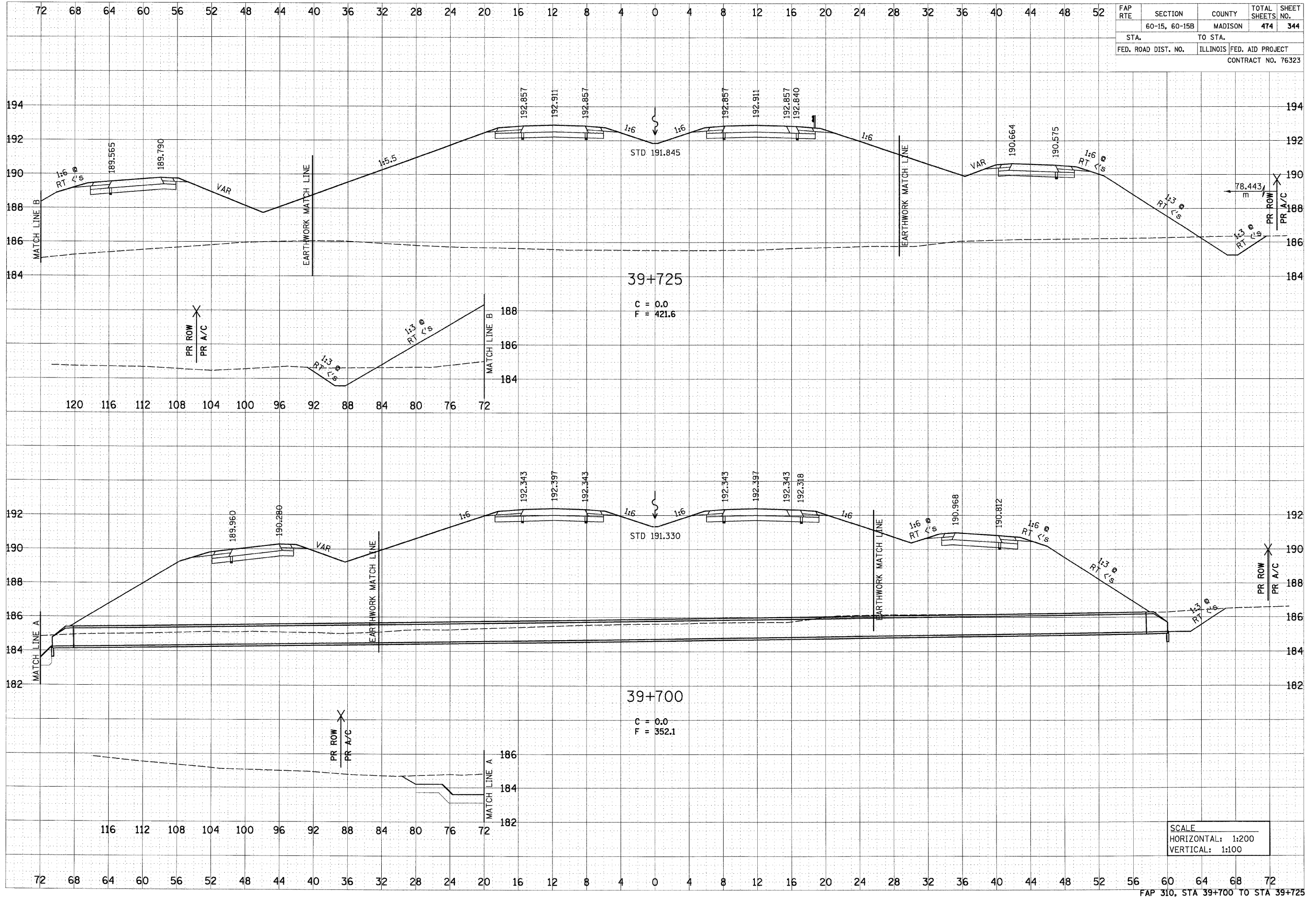


5/29/2007

DATE	BY
SURVEYED	
TEMPLATE	
NOTE BOOK	
AREAS	
CHECKED	
NO.	

DATE	BY
SURVEYED	
TEMPLATE	
NOTE BOOK	
AREAS	
CHECKED	
NO.	

FAP RTE	SECTION	COUNTY	TOTAL SHEETS	SHEET NO.
	60-15, 60-15B	MADISON	474	344
STA.	TO STA.			
FED. ROAD DIST. NO.	ILLINOIS	FED. AID PROJECT		
CONTRACT NO. 76323				



SCALE  
 HORIZONTAL: 1:200  
 VERTICAL: 1:100

p:\001\1es\0024\main\line\crosssections\sect015a.dgn