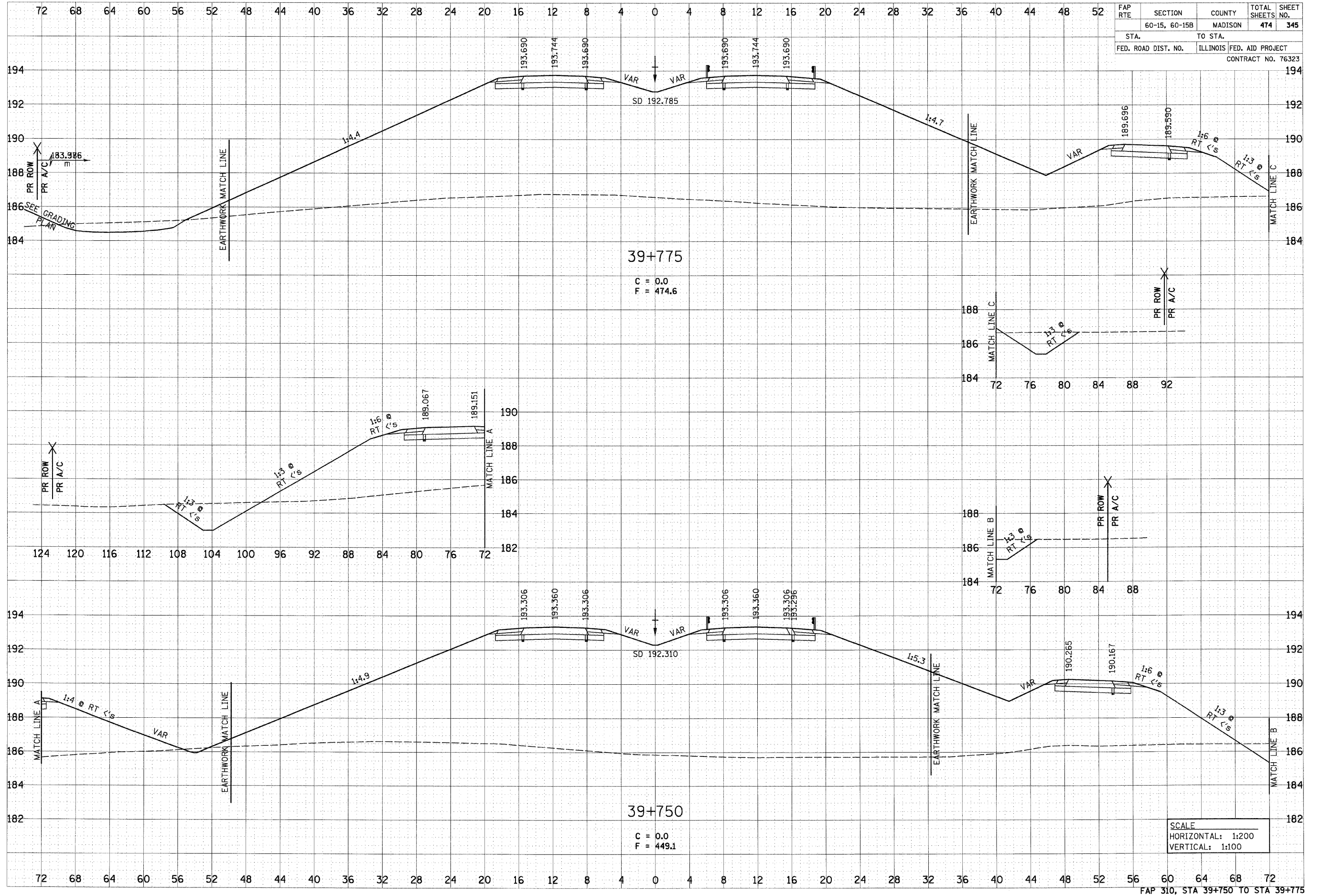


6/29/2007

DATE	
BY	
REVIEWED	
DESIGNED	
PLOTTED	
NOTE BOOK	
TEMPLATE	
AREAS CHECKED	
NO.	

DATE	
BY	
REVIEWED	
DESIGNED	
PLOTTED	
NOTE BOOK	
TEMPLATE	
AREAS CHECKED	
NO.	



FAP RTE	SECTION	COUNTY	TOTAL SHEETS	SHEET NO.
	60-15, 60-15B	MADISON	474	345
STA.	TO STA.			
FED. ROAD DIST. NO.	ILLINOIS FED. AID PROJECT		CONTRACT NO. 76323	

p:\2007\10a\200724\dm\mLine\crosssections\ksec@15a.dgn

FAP 310, STA 39+750 TO STA 39+775