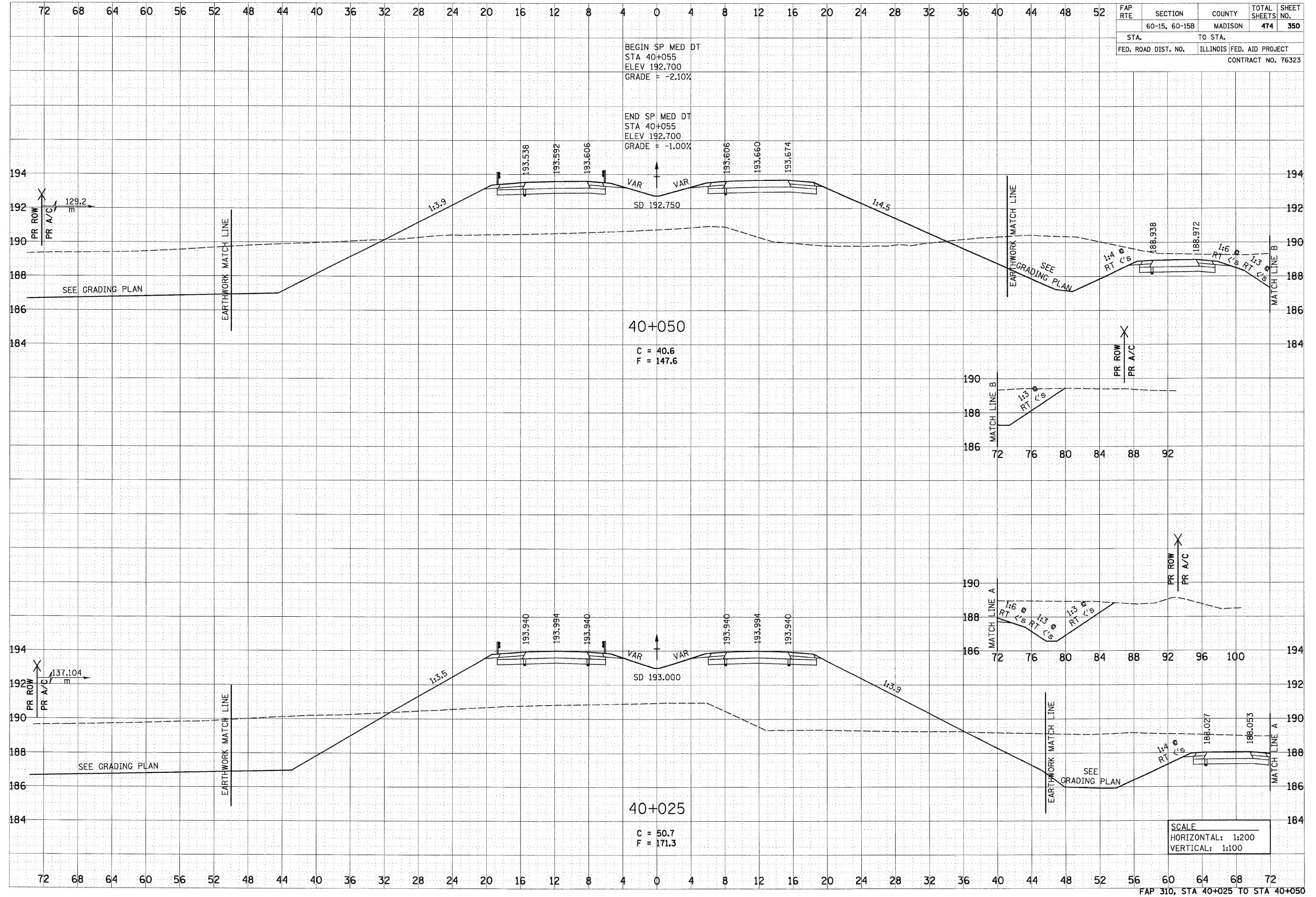


6/29/2007

DATE	
BY	
SURVEYED	
TEMPERATURE	
NOTE BOOK	
AREAS CHECKED	
NO.	

DATE	
BY	
ORIGINAL SURVEY	
TEMPERATURE	
NOTE BOOK	
AREAS CHECKED	
NO.	

FAP RTE	SECTION	COUNTY	TOTAL SHEETS	SHEET NO.
	60-15, 60-15B	MADISON	474	350
STA.	TO STA.			
FED. ROAD DIST. NO.	ILLINOIS	FED. AID PROJECT	CONTRACT NO. 76323	



BEGIN SP MED DT
 STA 40+055
 ELEV 192.700
 GRADE = -2.10%

END SP MED DT
 STA 40+055
 ELEV 192.700
 GRADE = -1.00%

40+050
 C = 40.6
 F = 147.6

40+025
 C = 50.7
 F = 171.3

SCALE
 HORIZONTAL: 1:200
 VERTICAL: 1:100