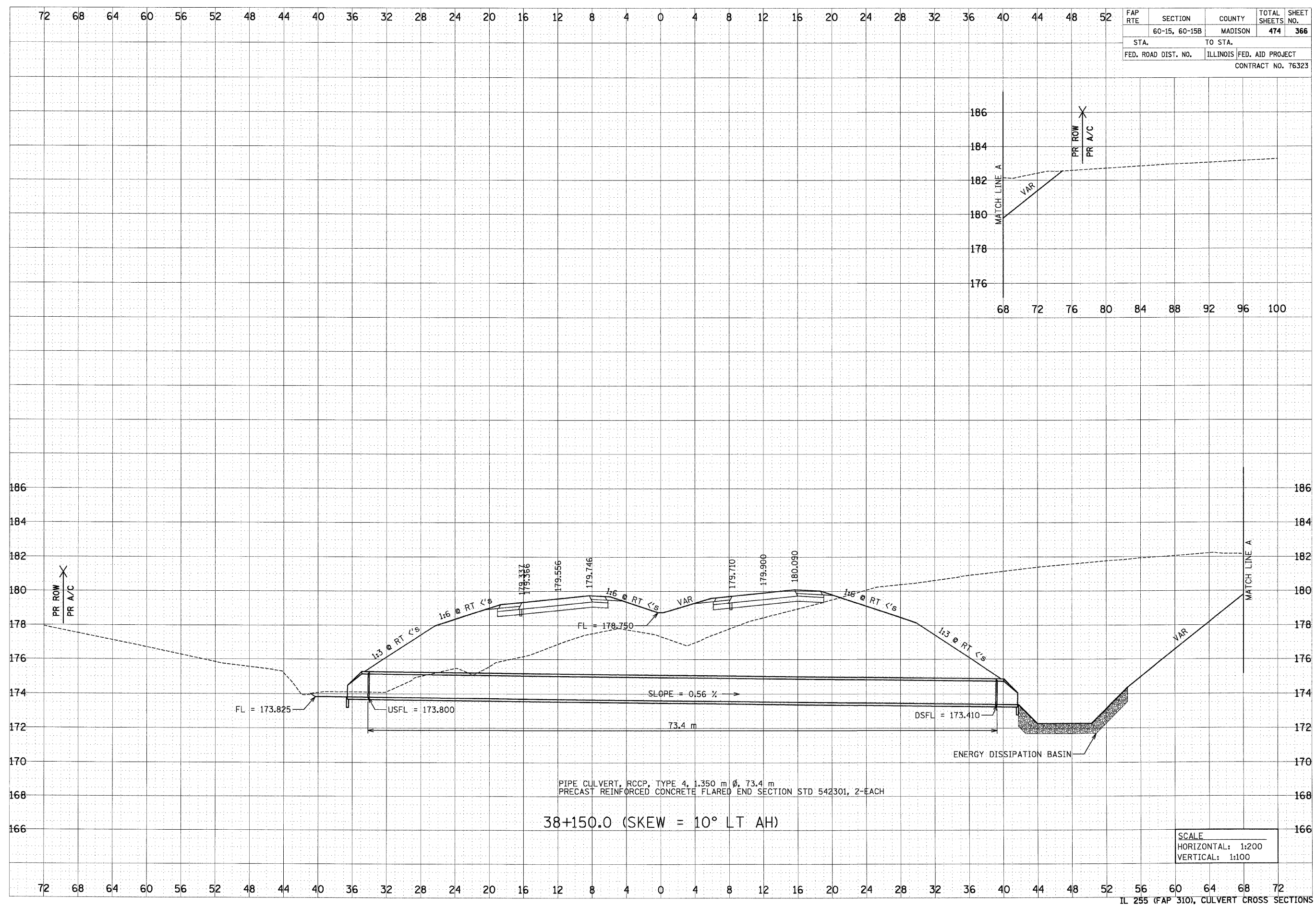


6/29/2007

FINAL SURVEY NOTE BOOK NO.	DATE
BY	
APPROVED	
DATE	
AREAS CHECKED	

ORIGINAL SURVEY NOTE BOOK NO.	DATE
BY	
APPROVED	
DATE	
AREAS CHECKED	

FAP RTE	SECTION	COUNTY	TOTAL SHEETS	SHEET NO.
	60-15, 60-15B	MADISON	474	366
STA.	TO STA.			
FED. ROAD DIST. NO.	ILLINOIS FED. AID PROJECT			
CONTRACT NO. 76323				



PIPE CULVERT, RCCP, TYPE 4, 1.350 m Ø, 73.4 m  
 PRECAST REINFORCED CONCRETE FLARED END SECTION STD 542301, 2-EACH

38+150.0 (SKEW = 10° LT AH)

SCALE  
 HORIZONTAL: 1:200  
 VERTICAL: 1:100