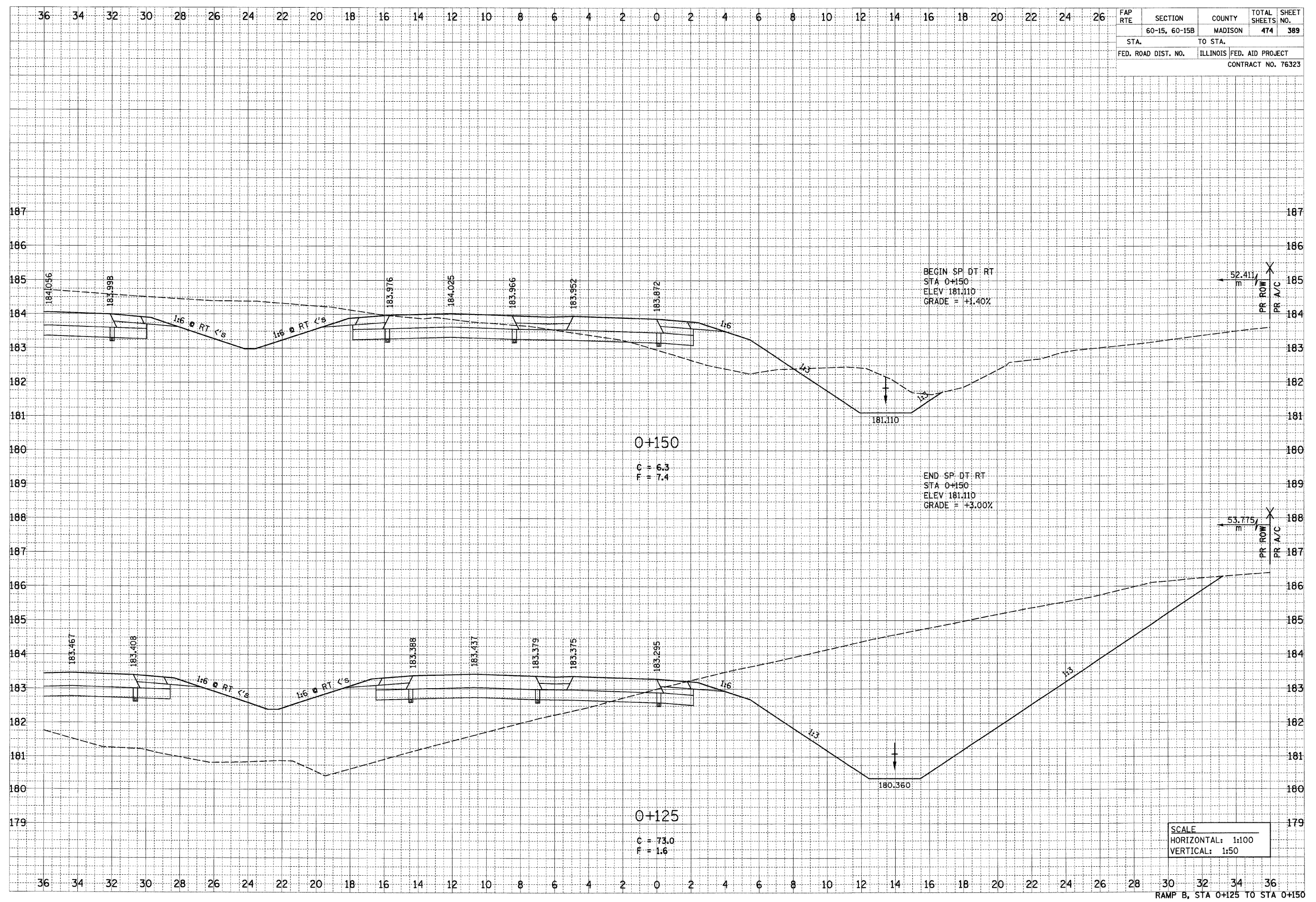


6/29/2007

FAP RTE	SECTION	COUNTY	TOTAL SHEETS NO.	SHEET NO.
	60-15, 60-15B	MADISON	474	389
STA.		TO STA.		
FED. ROAD DIST. NO.		ILLINOIS	FED. AID PROJECT	
CONTRACT NO. 76323				

FINAL SURVEY	SURVEYED	DATE
NOTE BOOK	BY	
AREAS CHECKED		

ORIGINAL SURVEY	SURVEYED	DATE
NOTE BOOK	BY	
AREAS CHECKED		



SCALE
 HORIZONTAL: 1:100
 VERTICAL: 1:50

RAMP B, STA 0+125 TO STA 0+150

p:\06711es\06024\main\line\crosssections\compb.dgn