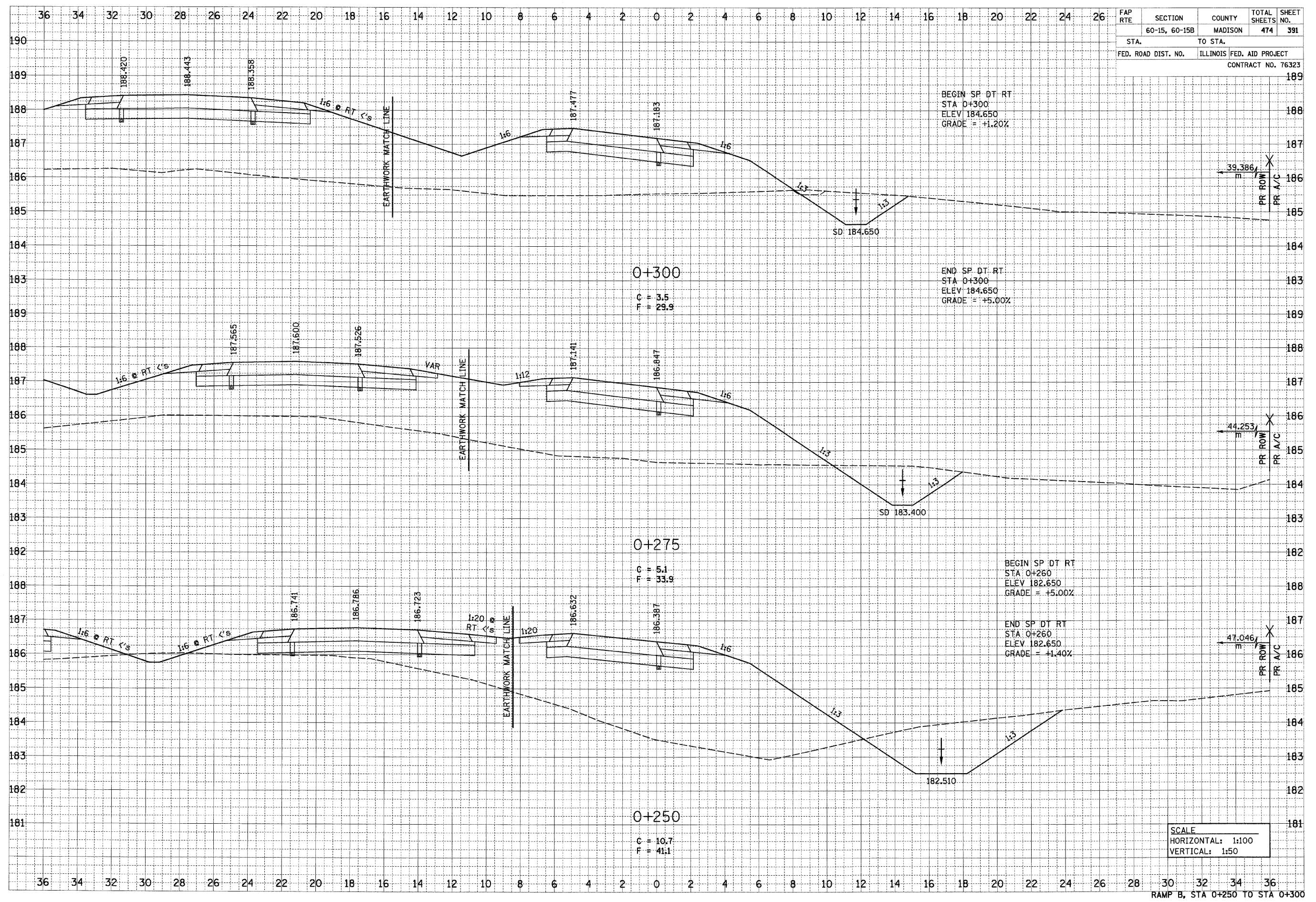


6/29/2007

DATE	BY
SURVEYED	BY
NOTE BOOK	BY
AREAS CHECKED	BY
AREAS CHECKED	BY

DATE	BY
SURVEYED	BY
NOTE BOOK	BY
AREAS CHECKED	BY
AREAS CHECKED	BY

FAP RTE	SECTION	COUNTY	TOTAL SHEETS	SHEET NO.
	60-15, 60-15B	MADISON	474	391
STA.	TO STA.			
FED. ROAD DIST. NO.	ILLINOIS FED. AID PROJECT			
CONTRACT NO. 76323				



SCALE
 HORIZONTAL: 1:100
 VERTICAL: 1:50

RAMP B, STA 0+250 TO STA 0+300

p:\0811es\08024\dm\11.mxd\crosssections\compb.dgn