

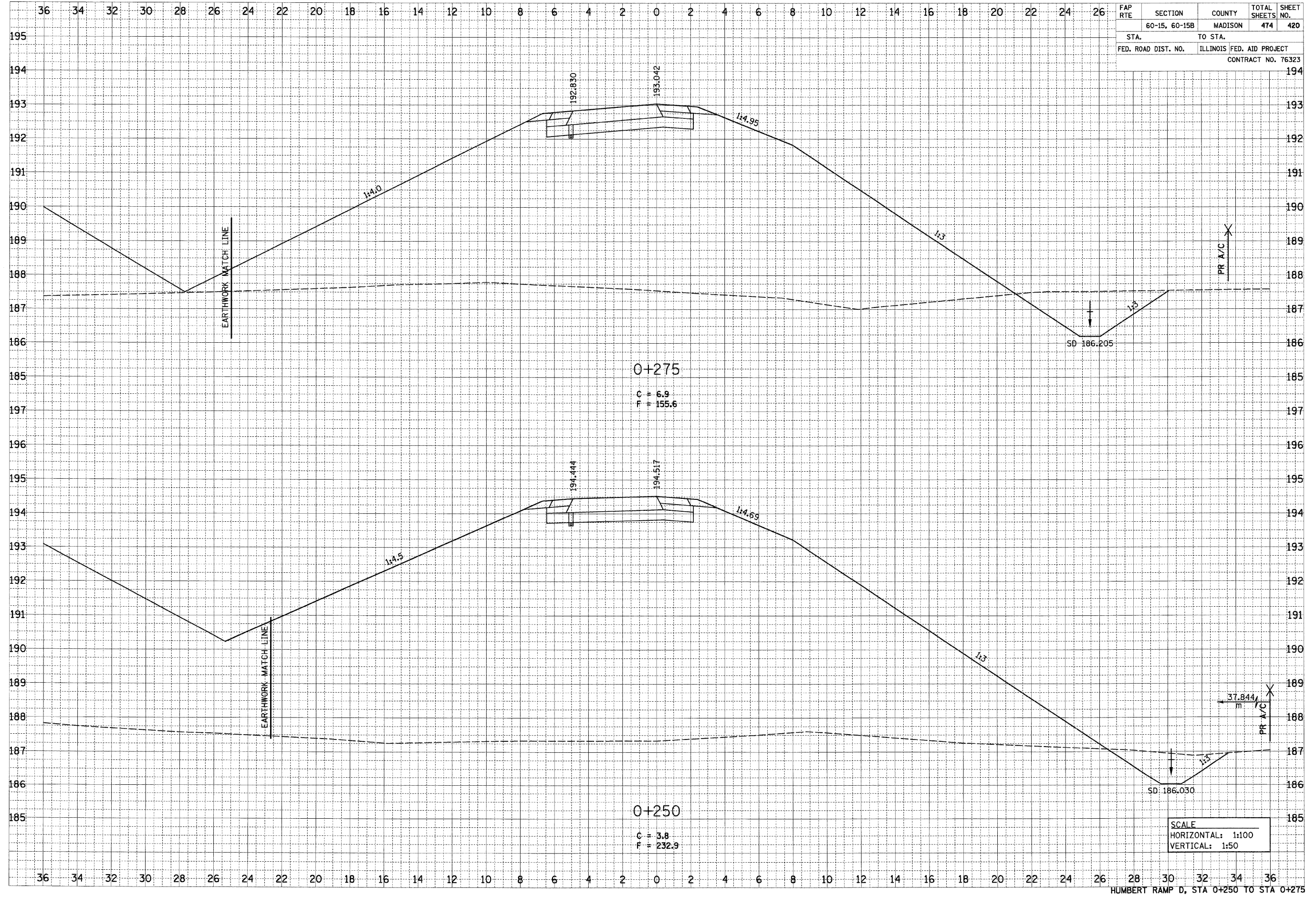
5/29/2007

p:\001\les\00224\main\line\crosssections\temp.dgn

FINAL SURVEY	DATE
SURVEYED	BY
NOTE BOOK	NO.
TEMPLATE	AREAS CHECKED
AREAS	AREAS CHECKED

ORIGINAL SURVEY	DATE
SURVEYED	BY
NOTE BOOK	NO.
TEMPLATE	AREAS CHECKED
AREAS	AREAS CHECKED

FAP RTE	SECTION	COUNTY	TOTAL SHEETS	SHEET NO.
	60-15, 60-15B	MADISON	474	420
STA.	TO STA.			
FED. ROAD DIST. NO.	ILLINOIS FED. AID PROJECT			
CONTRACT NO. 76323				



SCALE
 HORIZONTAL: 1:100
 VERTICAL: 1:50

HUMBERT RAMP D, STA 0+250 TO STA 0+275