

76706

F.A.P. RTE.	SECTION	COUNTY	TOTAL SHEETS	SHEET NO.
310	60-15HB-3	MADISON	93	1

INDEX OF SHEETS

- 1 COVER SHEET
- 2 GENERAL NOTES
- 3-4 SUMMARY OF QUANTITIES
- 5-7 TYPICAL SECTIONS
- 8 SCHEDULE OF QUANTITIES
- 9 ALIGNMENT & HORIZONTAL CONTROL
- 10-12 HORIZONTAL CONTROL TIE POINTS
- 13 TRAFFIC CONTROL PLAN
- 14-16 PLAN & PROFILE SHEETS - RAMP B /IL 255
- 17 GRADING PLAN
- 18-19 PLAT OF HIGHWAY SHEETS
- 20-22 STORM WATER POLLUTION PREVENTION PLAN
- 23-69 STRUCTURE PLANS - SN 060-0332
- 70 RAMP B SUPERELEVATION TABLE
- 71-72 MISCELLANEOUS DETAILS
- 73-86 CROSS SECTIONS - RAMP B
- 87-89 CROSS SECTIONS - FAP 310
- 90-93 CROSS SECTIONS - INGHAM LANE

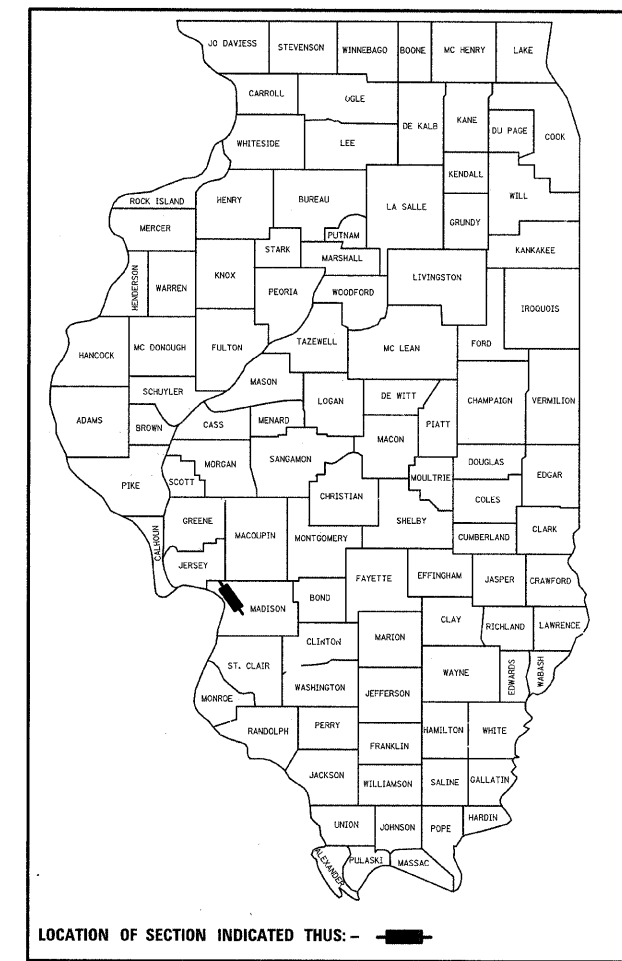
STATE OF ILLINOIS
DEPARTMENT OF TRANSPORTATION
DIVISION OF HIGHWAYS

PROPOSED HIGHWAY PLANS

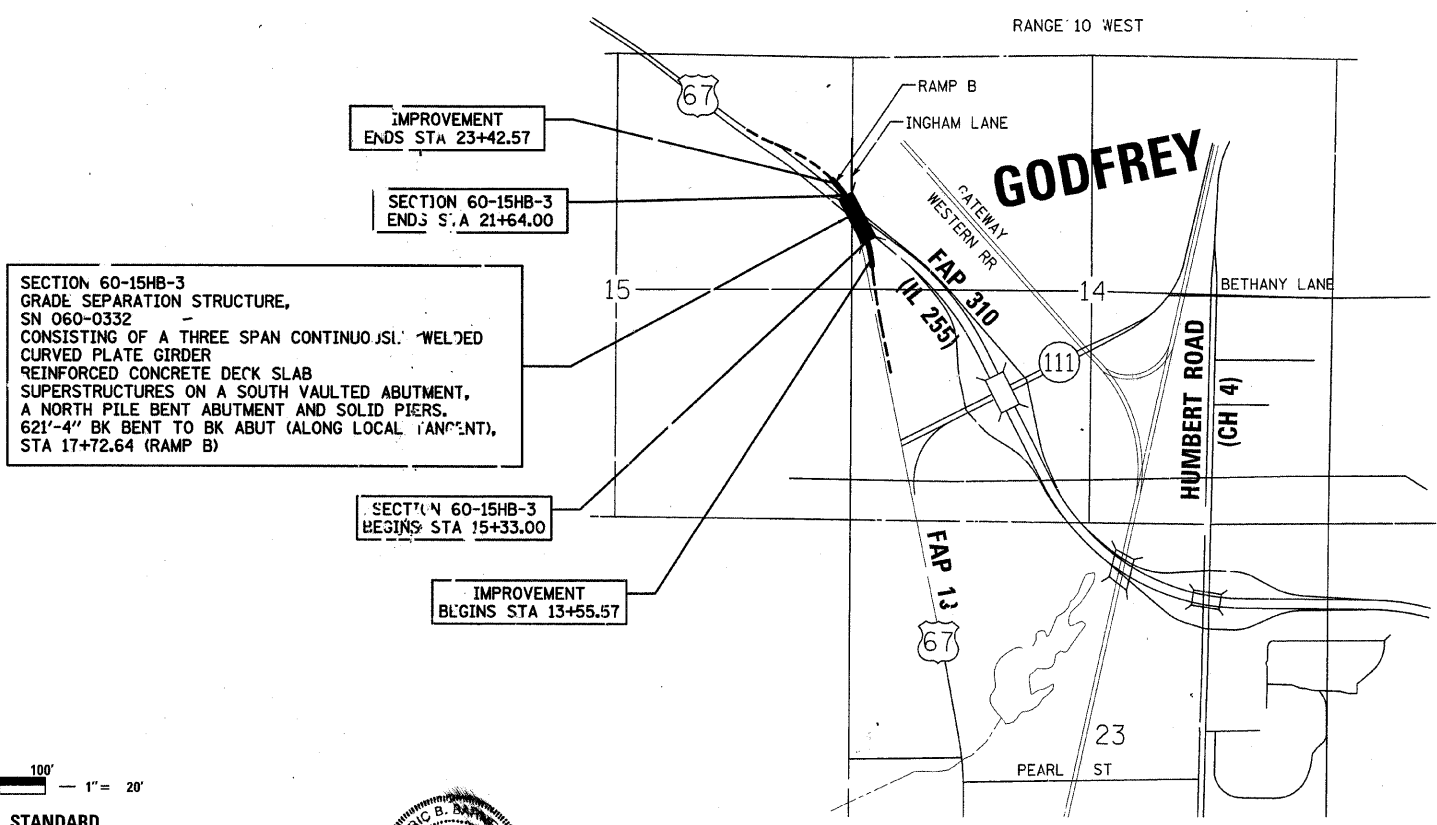
FAP ROUTE 310 (IL ROUTE 255)
SECTION 60-15HB-3
PROJECT CNHF-0310(140)
MADISON COUNTY
C-98-107-03

**CONSTRUCT CURVED STRUCTURE TO
 CARRY FAP ROUTE 10 (US 67) OVER AND
 ONTO FAP ROUTE 310 (IL 255)**

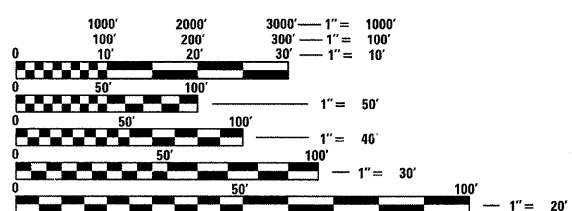
D-98-038-92



LOCATION OF SECTION INDICATED THUS: - [black rectangle] -



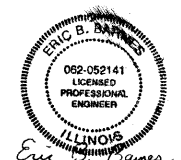
SECTION 60-15HB-3
 GRADE SEPARATION STRUCTURE,
 SN 060-0332
 CONSISTING OF A THREE SPAN CONTINUOUS WELDED
 CURVED PLATE GIRDER
 REINFORCED CONCRETE DECK SLAB
 SUPERSTRUCTURES ON A SOUTH VAULTED ABUTMENT,
 A NORTH PILE BENT ABUTMENT AND SOLID PIERS.
 621'-4" BK BENT TO BK ABUT (ALONG LOCAL ALIGNMENT),
 STA 17+72.64 (RAMP B)



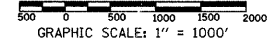
FULL SIZE PLANS HAVE BEEN PREPARED USING STANDARD
 ENGINEERING SCALES. REDUCED SIZED PLANS WILL NOT
 CONFORM TO STANDARD SCALES. IN MAKING MEASUREMENTS
 ON REDUCED PLANS, THE ABOVE SCALES MAY BE USED.

J.U.L.I.E.
 JOINT UTILITY LOCATION INFORMATION FOR EXCAVATION
 1-800-892-0123

CONTRACT NO. 76706



ERIC B. BARNES DATE 11-18-08
 REGISTERED PROFESSIONAL ENGINEER
 STATE OF ILLINOIS NO. 062-052141
 LICENSE EXPIRES NOVEMBER 30, 2009



Latitude : 38.9755
 Longitude : 90.1952

GROSS / NET LENGTH OF SECTION 60-15HB-3 = 631.00 FT = 0.120 MILES

DESIGN DESIGNATION
 FAP 310: 3350(24) ARTERIAL 7.11 (FD-20)



TOWNSHIP 6 NORTH

PLANS PREPARED BY:

KLINGNER & ASSOCIATES, P.C.
 Engineers • Architects • Surveyors

100 North 21st Street, Quincy, IL Ph: (217) 223-8676 Fax: (217) 223-2680
 4520 Paris Grand Road, Harwood, MD Ph: (410) 221-8820 Fax: (410) 221-8822
 600 N. 4th Street, Suite 300, Burlington, IL Ph: (319) 753-1636 Fax: (319) 752-3685
 41 North Prairie Street, Galesburg, IL Ph: (309) 342-4842 Fax: (309) 341-3778
 Internet Address: www.klingner.com

STATE OF ILLINOIS DESIGN FIRM # 1842738

STATE OF ILLINOIS
 DEPARTMENT OF TRANSPORTATION
 DIVISION OF HIGHWAYS

SUBMITTED Dec 7, 2009

Max C. Parnis
 DEPUTY DIRECTOR OF HIGHWAYS, REGION FIVE ENGINEER

January 29, 2010

Scott E. Shul P.E.
 ENGINEER OF DESIGN AND ENVIRONMENT

January 29, 2010

Christine M. Kead
 DIRECTOR, DIVISION OF HIGHWAYS

**PRINTED BY THE AUTHORITY
 OF THE STATE OF ILLINOIS**

PROJECT ENGINEER: PATTI LEBEAU (618)346-3179
 SQUAD CONTACT: ARTHUR MUEHLFELD (618)346-3209