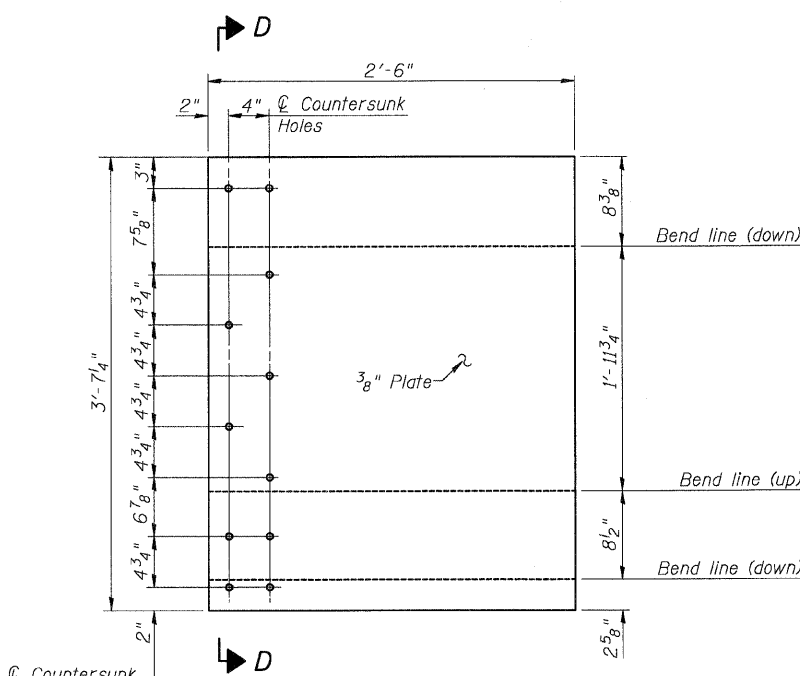
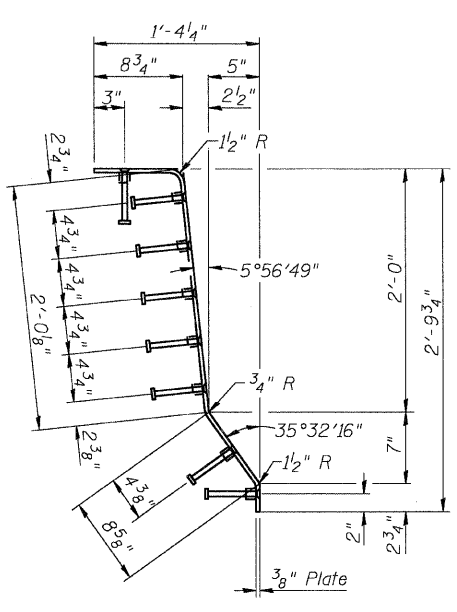
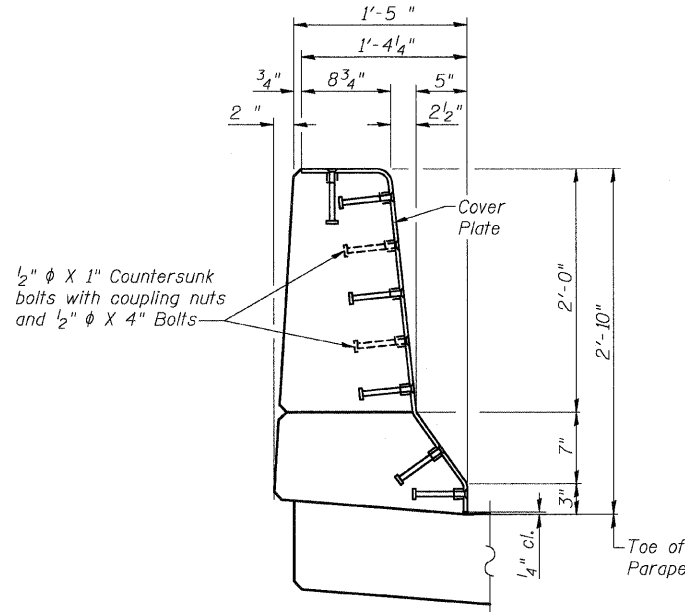


11/10/2008 4:33:05 PM

p:\09\files\00024\cf\cover-bridge-plans\060332\modular-joint.mxd

ROUTE NO.	SECTION	COUNTY	TOTAL SHEETS	SHEET NO.	SHEET NO. 17
S.B. 1.	*	MADISON	93	39	47 SHEETS
F.A.P. 318					
FED. ROAD DIST. NO. 7	ILLINOIS	FED. AID PROJECT-			

* 60-15HB-3 Contract No. 76706



COVER PLATE BEND DETAILS
(2-plates required)

Vertical dimensions are along neutral axis of plate.

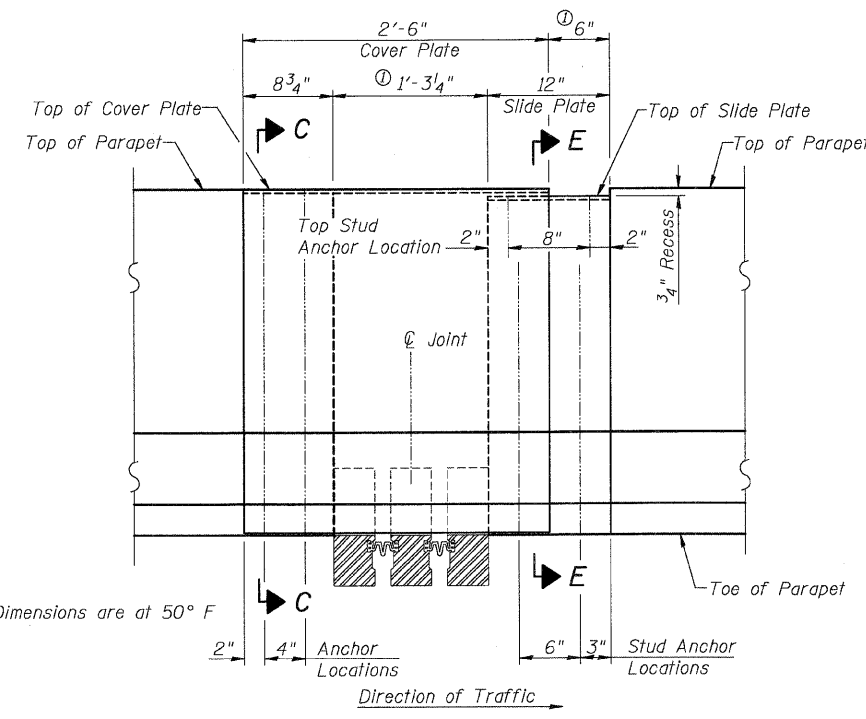


PLATE ELEVATION G-G

Notes:

The Swivel Modular Expansion Joint shall be either MAURER Swivel system by D.S. Brown Co. or the WABO X-CEL system by Watson Bowman Acme Corporation. The joint shall provide the following movements:

Location	Longitudinal Movement (inch)	Differential Non-Parallel Long. Movement (inch)	Size (inch)
N. Abut.	4 3/4"	3 1/4"	6"

Joint openings shall be adjusted according to Article 503.10(c) of the Standard Specifications when the blockout is cast at an ambient temperature other than 50° F.

Cover plates and slide plates shall be AASHTO M270 Grade 36 steel, and hot-dipped galvanized according to AASHTO M111 after fabrication.

Countersunk Cap Screws and Concrete Inserts shall be Hot-dipped galvanized according to AASHTO M232.

The cost of furnishing the Cover Plates, Slide Plates, Countersunk Cap Screws, Stud Anchors, and the installation of these items shall be included with "Modular Expansion Joint - Swivel 6".

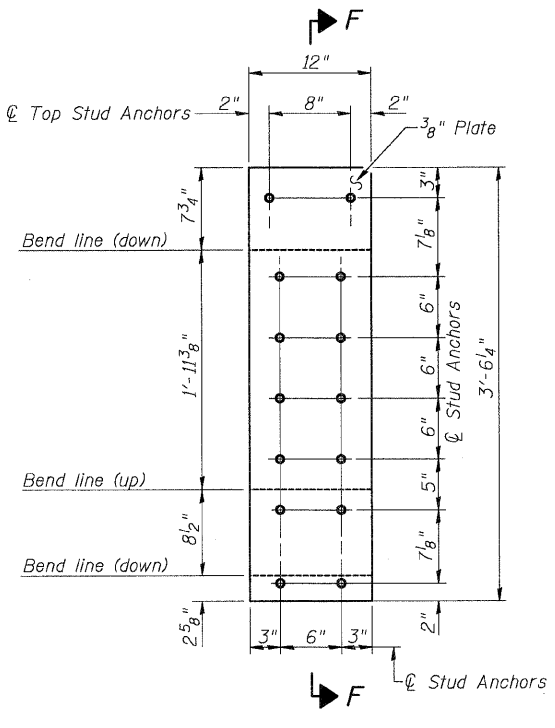
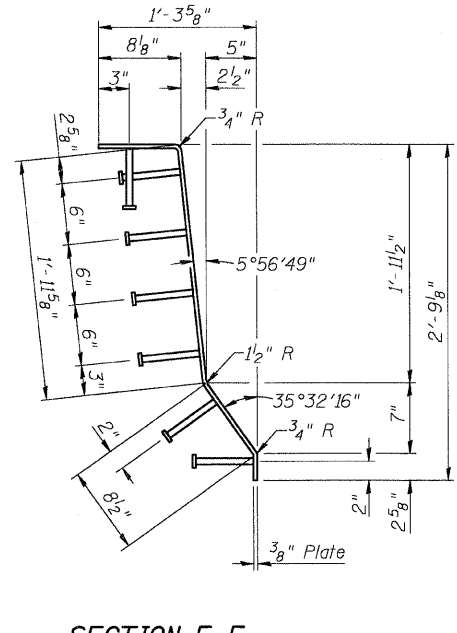
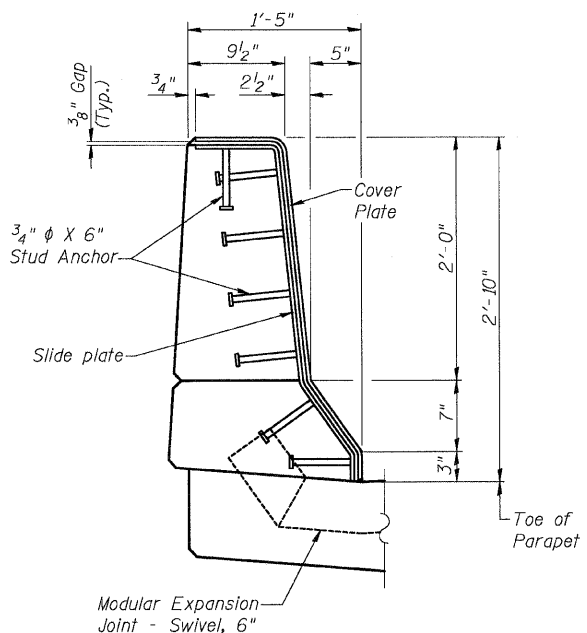
Cover Plates shall be mounted using 1/2" φ Countersunk Cap Screws with Hex Coupling Nuts and 1/2" φ X 4" long bolts.

Cover Plates shall be mounted towards oncoming traffic.

For Reinforcing at Expansion Joint see sheet #12 of 47.

Dimensions are based on the D.S. Brown DS160B Swivel Modular Expansion Joint. If a different model or manufacture is used, the dimensions may require adjustment as approved by the engineer.

Work this sheet with sheet #16 of 47.



SLIDE PLATE BEND DETAILS
(2-plates required)

Vertical dimensions are along neutral axis of plate.

DESIGNED	ADL
CHECKED	WLW
DRAWN	RLW
CHECKED	WLW

SWIVEL MODULAR EXPANSION JOINT
RAMP B OVER FAP RTE 310
SECTION 60-15HB-3
MADISON COUNTY
STATION 17+72.64 (RAMP B)
SN 060-0332