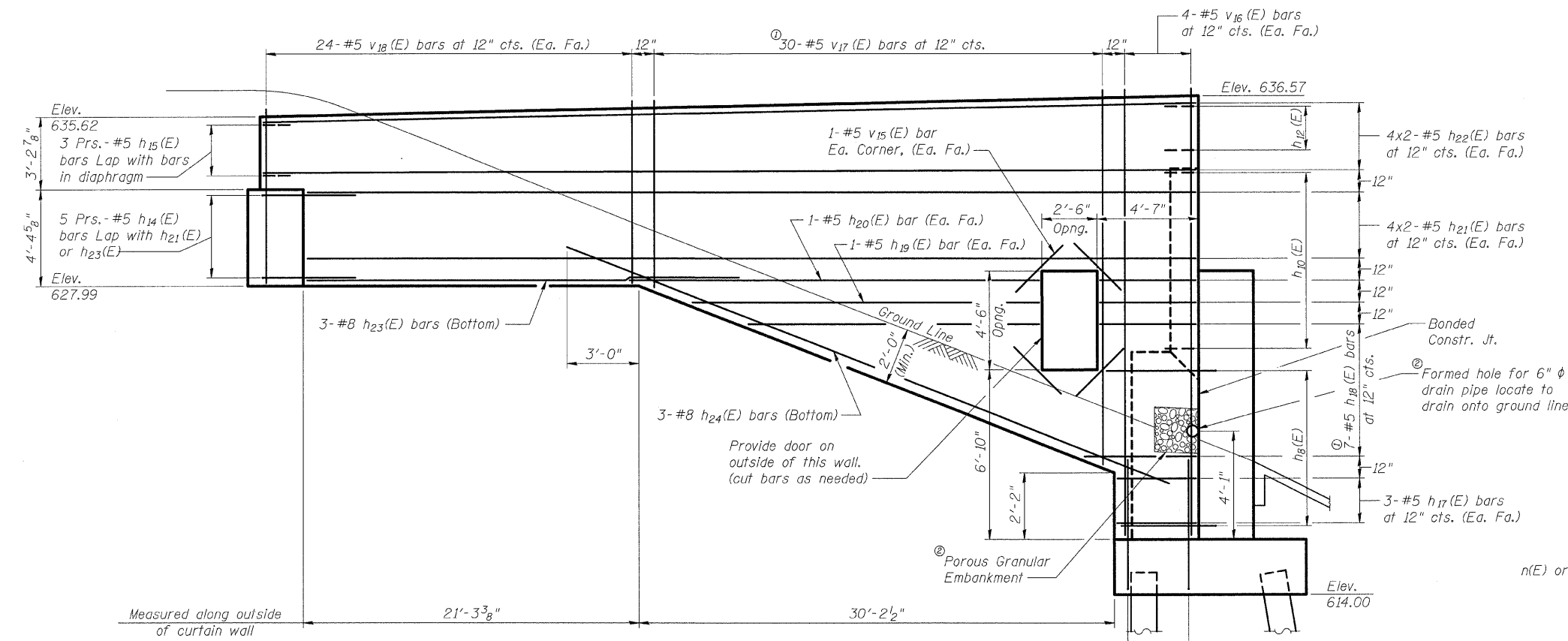
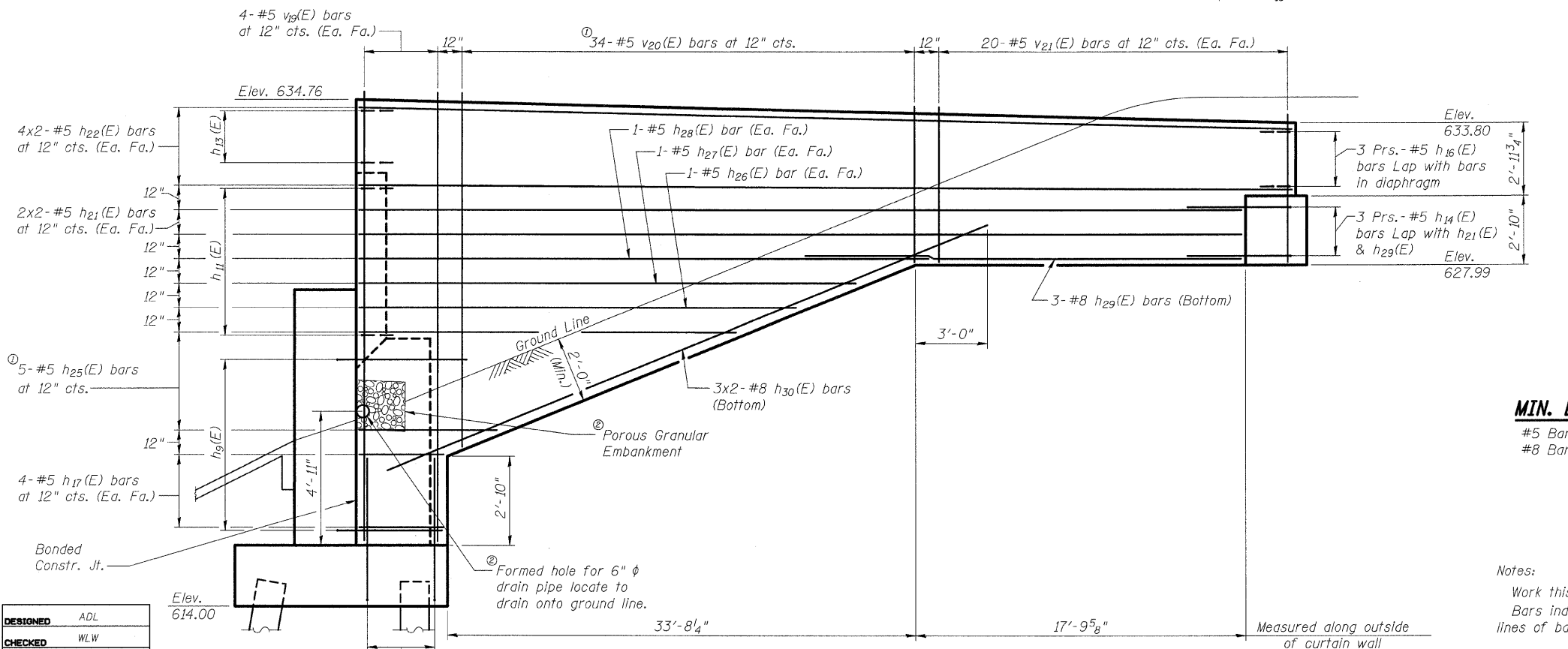


1/12/2010 9:57:42 AM

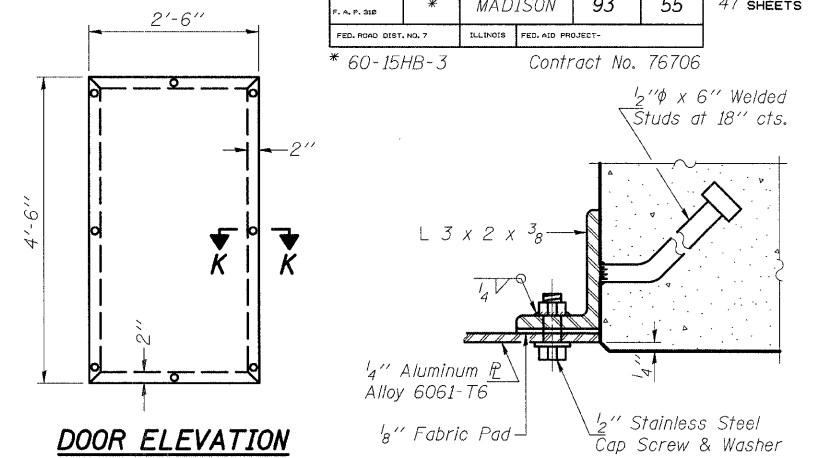
ROUTE NO.	SECTION	COUNTY	STATE	SHEET NO.	SHEET NO. 33 47 SHEETS
S. B. I. F. A. P. 310	*	MADISON	93	55	
FED. ROAD DIST. NO. 7	ILLINOIS	FED. AID PROJECT-			
* 60-15HB-3			Contract No. 76706		



**EAST SIDE ELEVATION**  
(Looking West)

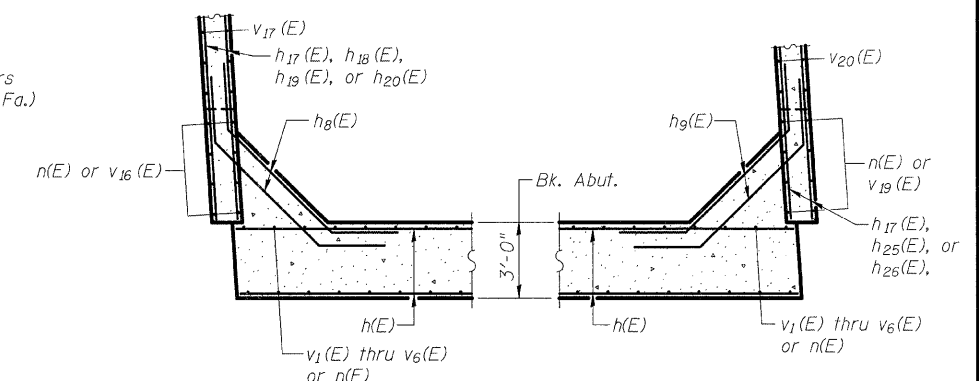


**WEST SIDE ELEVATION**  
(Looking East)

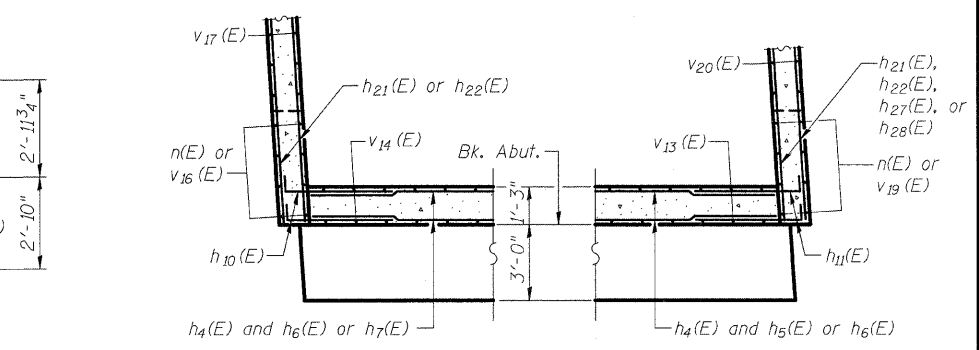


**DOOR ELEVATION**  
Cost of door and frame are included with "Concrete Structures".

**SECTION K-K**



**SECTION J-J**



**SECTION I-I**

**MIN. BAR LAP**  
#5 Bar = 2'-2"  
#8 Bar = 4'-6"

① Order h<sub>18</sub>(E), h<sub>25</sub>(E), v<sub>17</sub>(E) & v<sub>20</sub>(E) bars full length cut to fit as shown and use remainder of bars in opposite face of curtain wall. See Field Cutting Diagram on Sheet #31 of 47.  
② See Vaulted Abutment & Slope wall Detail on sheet #3 of 47.

Notes:  
Work this sheet with sheets #31 & #32 of 47.  
Bars indicated thus 4x2-#5 etc. indicates 4 lines of bars with 2 lengths per line.

**SOUTH ABUTMENT  
RAMP B OVER FAP RTE 310  
SECTION 60-15HB-3  
MADISON COUNTY  
STATION 17+72.64 (RAMP B)  
SN 060-0332**

Klingner & Assoc., P.C.

DESIGNED	ADL
CHECKED	WLW
DRAWN	BGJ
CHECKED	WLW