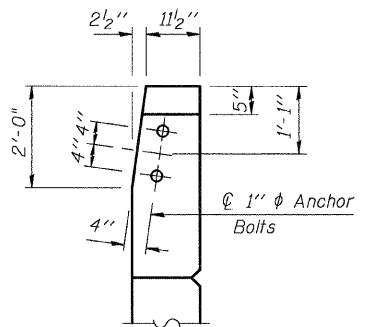


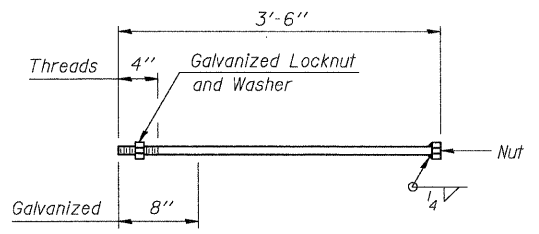
11/10/2008 4:37:22 PM

p:\00f\1es\000024\df\cover-bridge\bridge\plans\0600332\northabut.dgn

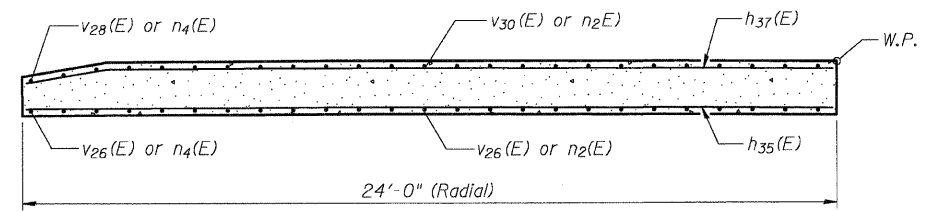
ROUTE NO.	SECTION	COUNTY	SHEETS	SHEET NO.
60-15HB-3	*	MADISON	93	59
47 SHEETS				
Contract No. 76706				



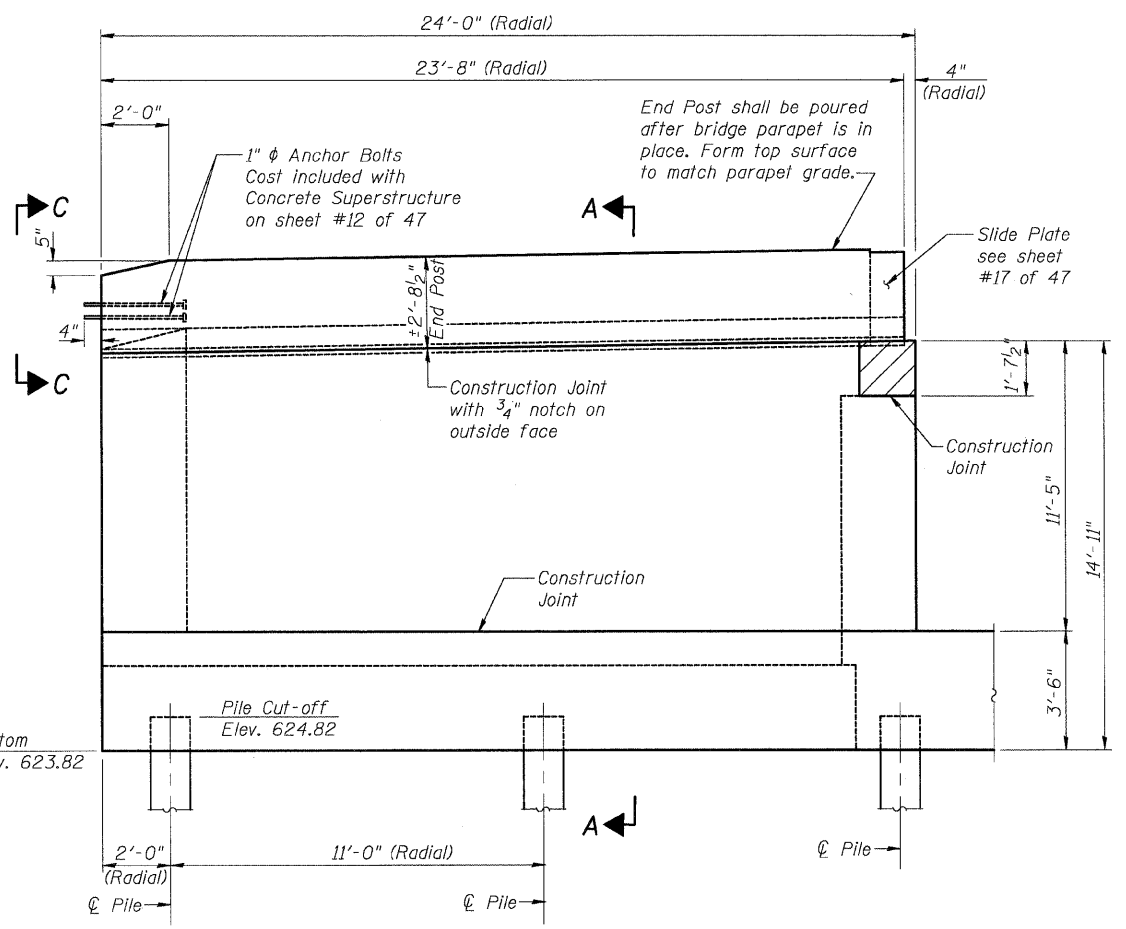
SECTION C-C



1" ϕ ANCHOR BOLT

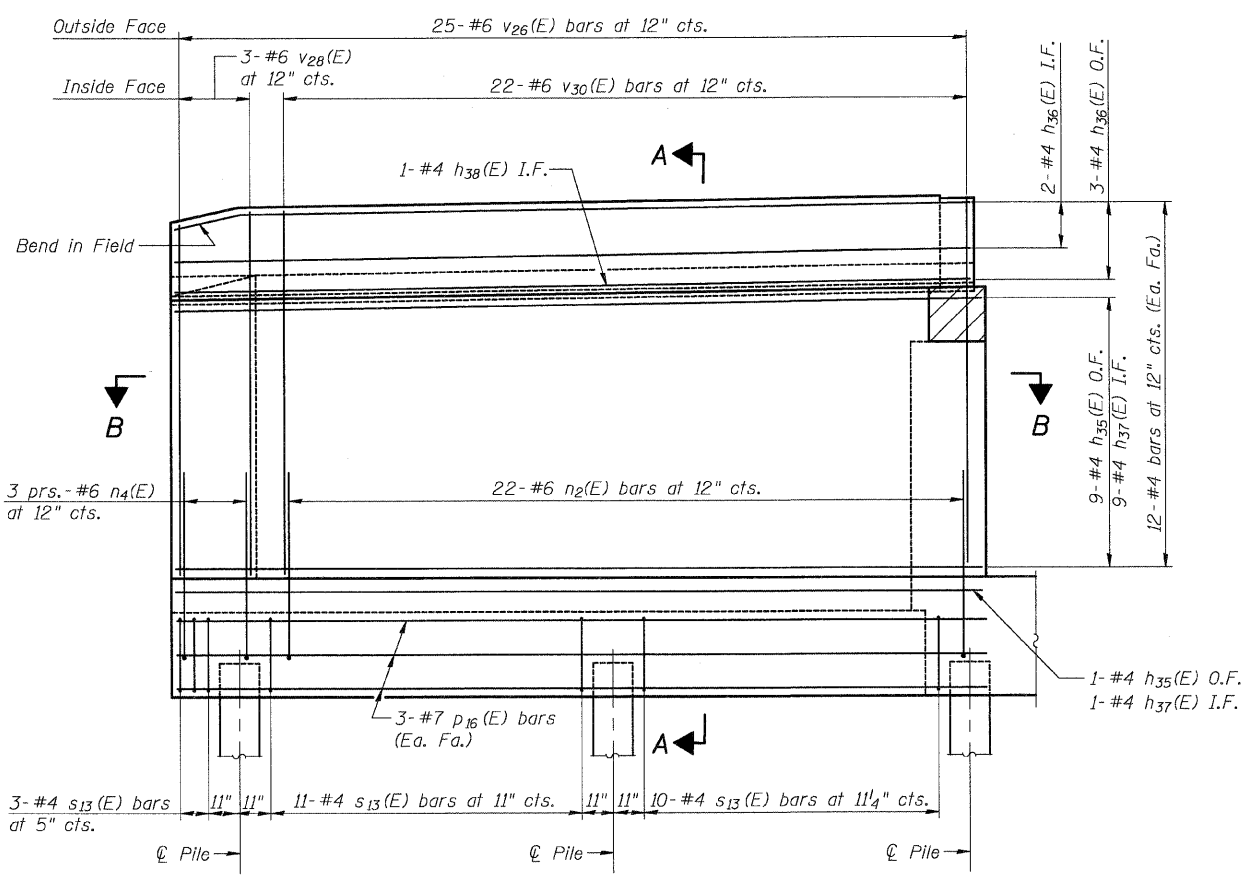


SECTION B-B



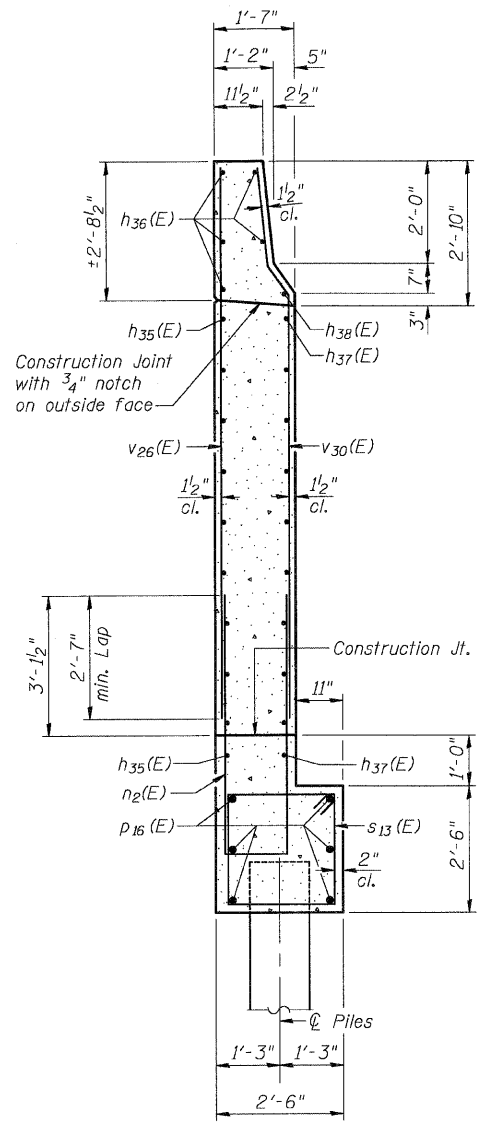
WEST WING WALL ELEVATION

(Looking East)
Showing Dimensions



WEST WING WALL ELEVATION

(Looking East)
Showing Reinforcement



SECTION A-A

MIN. BAR LAP
#6 bar - 2'-7"

Notes:
Hatched area to be poured after superstructure forms have been removed. Quantity of concrete included with Concrete Superstructure on sheet #12 of 47.
Quantity of concrete in end post included with Concrete Superstructure on sheet #12 of 47.

NORTH ABUTMENT
RAMP B OVER FAP RTE 310
SECTION 60-15HB-3
MADISON COUNTY
STATION 17+72.64 (RAMP B)
SN 060-0332

Klingner & Assoc., P.C.

DESIGNED	ADL
CHECKED	WLW
DRAWN	BGJ
CHECKED	WLW